



UK Office

Everest Biotech Ltd

Cherwell Innovation Centre
77 Heyford Park
Upper Heyford
Oxfordshire
OX25 5HD
UK

Enquiries:

info@everestbiotech.com

Sales:

sales@everestbiotech.com

Tech support:

support@everestbiotech.com

Tel: +44 (0)1869 238326

www.everestbiotech.com

**Research Use Only. Not for
diagnostic or therapeutic use.**

EB10280 - Goat Anti-RHBG (mouse) Antibody

Size: 100µg specific antibody in 200µl



Target Protein

Principal Names: Rh family, B glycoprotein (gene/pseudogene), Rh type B glycoprotein, Rhesus blood group, B glycoprotein, SLC42A2, RHBG

Official Symbol: RHBG

Accession Number(s): NP_067350.2

Non-Human GeneID(s): 58176 (mouse)

Immunogen

Peptide with sequence C-PLRGGESDTR, from the C Terminus of the protein sequence according to NP_067350.2.

Please note the [peptide](#) is available for sale.

Purification and Storage

Purified from goat serum by ammonium sulphate precipitation followed by antigen affinity chromatography using the immunizing peptide.

Supplied at 0.5 mg/ml in Tris saline, 0.02% sodium azide, pH7.3 with 0.5% bovine serum albumin.

Aliquot and store at -20°C. Minimize freezing and thawing.

Applications Tested

Peptide ELISA: antibody detection limit dilution 1:1000.

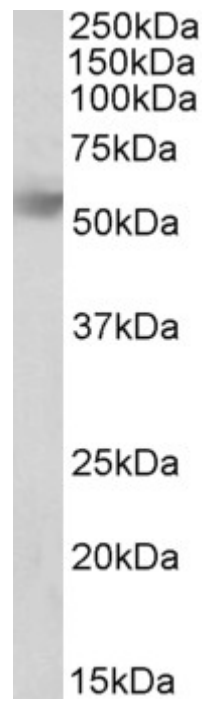
Western blot: Approx 55kDa band observed in Mouse Kidney lysates and in lysates of cell lines NIH3T3 and NSO (calculated MW of 49.5kDa according to NP_067350.2).

Recommended concentration: 1-3µg/ml.

Species Reactivity

Tested: Mouse

Expected from sequence similarity: Mouse



EB10280 (1 μ g/ml) staining of NSO lysate (35 μ g protein in RIPA buffer). Primary incubation was 1 hour. Detected by chemiluminescence.