



UK Office

Everest Biotech Ltd

Cherwell Innovation Centre
77 Heyford Park
Upper Heyford
Oxfordshire
OX25 5HD
UK

Enquiries:

info@everestbiotech.com

Sales:

sales@everestbiotech.com

Tech support:

support@everestbiotech.com

Tel: +44 (0)1869 238326

www.everestbiotech.com

**Research Use Only. Not for
diagnostic or therapeutic use.**

EB10365 - Goat Anti-RHCG Antibody

Size: 100µg specific antibody in 200µl



Target Protein

Principal Names: C15orf6, PDRC2, Rh family, C glycoprotein, Rh type C glycoprotein, Rhesus blood group, C glycoprotein, RHGK, SLC42A3, RHCG

Official Symbol: RHCG

Accession Number(s): NP_057405.1

Human GeneID(s): [51458](#)

Immunogen

Peptide with sequence C-ERQNSVYQSD, from the internal region of the protein sequence according to NP_057405.1.

Please note the [peptide](#) is available for sale.

Purification and Storage

Purified from goat serum by ammonium sulphate precipitation followed by antigen affinity chromatography using the immunizing peptide.

Supplied at 0.5 mg/ml in Tris saline, 0.02% sodium azide, pH7.3 with 0.5% bovine serum albumin.

Aliquot and store at -20°C. Minimize freezing and thawing.

Applications Tested

Peptide ELISA: antibody detection limit dilution 1:16000.

Western blot: Approx 60kDa band observed in Human Testis lysates (calculated MW of 53.2kDa according to NP_057405.1). The observed molecular weight corresponds to earlier findings in literature with different antibodies (Liu et al, J Biol Chem. 2000 Aug 18;275(33):25641-51; PMID: 10852913). Recommended concentration: 1-3µg/ml. Primary incubation was 1 hour.

IHC: Paraffin embedded Human Tonsil and Kidney. Recommended concentration: 5µg/ml.

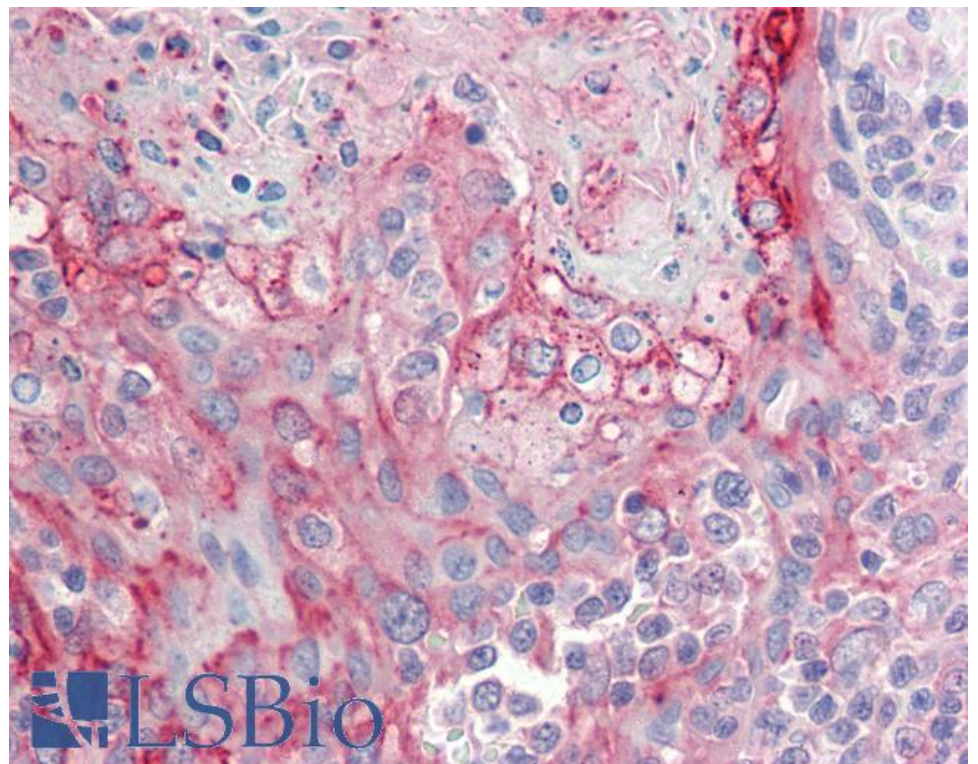
Species Reactivity

Tested: Human

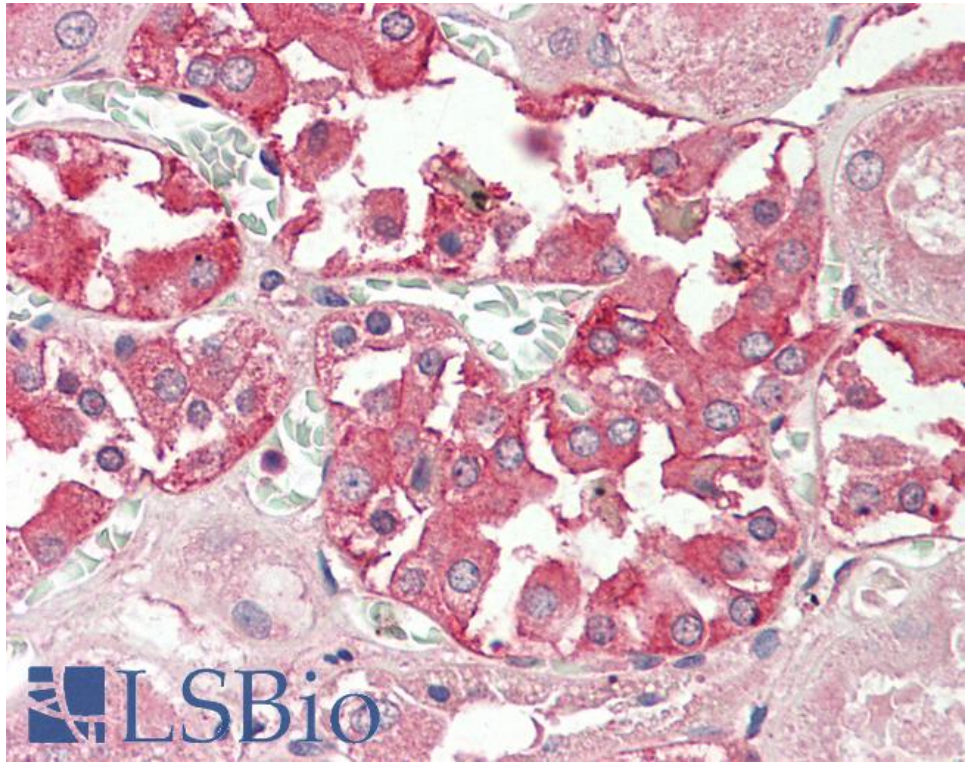
Expected from sequence similarity: Human, Dog, Pig



EB10365 (1 μ g/ml) staining of Human Testis lysate (35 μ g protein in RIPA buffer). Detected by chemiluminescence.



EB10365 (5 μ g/ml) staining of paraffin embedded Human Tonsil. Steamed antigen retrieval with citrate buffer pH 6, AP-staining.



EB10365 (5µg/ml) staining of paraffin embedded Human Kidney. Steamed antigen retrieval with citrate buffer pH 6, AP-staining.