

## UK Office

### Everest Biotech Ltd

Cherwell Innovation Centre  
77 Heyford Park  
Upper Heyford  
Oxfordshire  
OX25 5HD  
UK

Enquiries:

[info@everestbiotech.com](mailto:info@everestbiotech.com)

Sales:

[sales@everestbiotech.com](mailto:sales@everestbiotech.com)

Tech support:

[support@everestbiotech.com](mailto:support@everestbiotech.com)

Tel: +44 (0)1869 238326

[www.everestbiotech.com](http://www.everestbiotech.com)

**Research Use Only. Not for  
diagnostic or therapeutic use.**

## EB10366 - Goat Anti-Rhcg (mouse) Antibody

Size: 100µg specific antibody in 200µl



### Target Protein

**Principal Names:** Rhcg, Rhesus blood group-associated C glycoprotein, BB065800, Rh type C glycoprotein, ammonium transporter Rh type C, rh family type C glycoprotein, rhesus blood group family type C glycoprotein, rhesus-associated C glycoprotein

**Official Symbol:** Rhcg

**Accession Number(s):** NP\_062773.2

**Non-Human GeneID(s):** 56315 (mouse), 293048 (rat)

### Immunogen

Peptide with sequence TNLRGRLPITC, from the N Terminus of the protein sequence according to NP\_062773.2.

Please note the [peptide](#) is available for sale.

### Purification and Storage

Purified from goat serum by ammonium sulphate precipitation followed by antigen affinity chromatography using the immunizing peptide.

Supplied at 0.5 mg/ml in Tris saline, 0.02% sodium azide, pH7.3 with 0.5% bovine serum albumin.

Aliquot and store at -20°C. Minimize freezing and thawing.

### Applications Tested

**Peptide ELISA:** antibody detection limit dilution 1:32000.

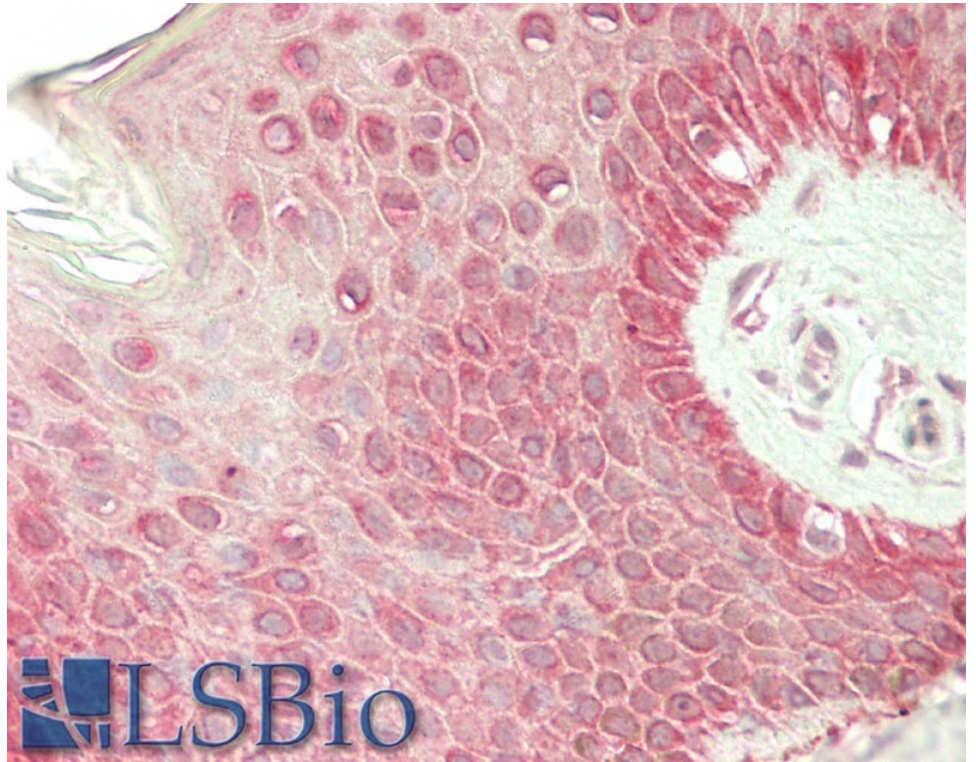
**Western blot:** Preliminary experiments gave an approx 75kDa band in Mouse Brain lysates after 0.3 µg/ml antibody staining. Please note that currently we cannot find an explanation in the literature for the band we observe given the calculated size of 55.0kDa according to NP\_062773.2. The 75kDa band was successfully blocked by incubation with the immunizing peptide.

**IHC:** Paraffin embedded Human Skin. Recommended concentration: 5µg/ml.

### Species Reactivity

**Tested:** Human

**Expected from sequence similarity:** Mouse, Rat



EB10366 (5µg/ml) staining of paraffin embedded Human Skin. Steamed antigen retrieval with citrate buffer pH 6, AP-staining.