



UK Office

Everest Biotech Ltd

Cherwell Innovation Centre
77 Heyford Park
Upper Heyford
Oxfordshire
OX25 5HD
UK

Enquiries:

info@everestbiotech.com

Sales:

sales@everestbiotech.com

Tech support:

support@everestbiotech.com

Tel: +44 (0)1869 238326

Fax: +44 (0)1869 238327

US Office

Everest Biotech c/o Abcore

405 Maple Street, Suite A106
Ramona,
CA 92065
USA

Inquiries:

info@everestbiotech.com

Sales:

usasales@everestbiotech.com

Tech support:

support@everestbiotech.com

Tel: 888-320-4628 (toll-free)

Fax: 888-841-9041

www.everestbiotech.com

**Research Use Only. Not for
diagnostic or therapeutic use.**

EB06853 - Goat Anti-Rhophilin 2 (Internal) Antibody

Size: 100µg specific antibody in 200µl



Target Protein

Principal Names: RHPN2, p76RBE, rhophilin, Rho GTPase binding protein 2, rhophilin 2, rhophilin-2, RhoB effector, rhophilin-like protein, P76RBE, RHOBP, 76 kDa RhoB effector protein, GTP-Rho-binding protein 2, rhophilin-like Rho-GTPase binding protein

Official Symbol: RHPN2

Accession Number(s): NP_149094.3

Human GeneID(s): [85415](#)

Immunogen

Peptide with sequence C-TNKNRQKSAST, from the internal region of the protein sequence according to NP_149094.3.

Please note the [peptide](#) is available for sale.

Purification and Storage

Purified from goat serum by ammonium sulphate precipitation followed by antigen affinity chromatography using the immunizing peptide.

Supplied at 0.5 mg/ml in Tris saline, 0.02% sodium azide, pH7.3 with 0.5% bovine serum albumin.

Aliquot and store at -20°C. Minimize freezing and thawing.

Applications Tested

Peptide ELISA: antibody detection limit dilution 1:32000.

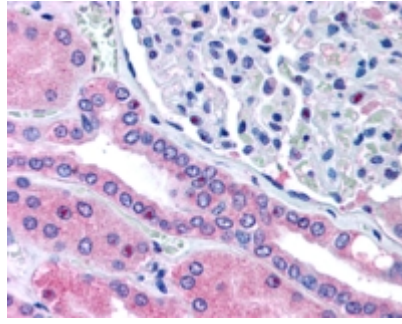
Western blot: Preliminary experiments gave an approx 35kDa band in Human Pancreas and Prostate lysates after 0.3µg/ml antibody staining. Please note that currently we cannot find an explanation in the literature for the band we observe given the calculated size of 77kDa according to NP_149094.2. The 35kDa band was successfully blocked by incubation with the immunizing peptide. We would appreciate any feedback from people in the field - have any results been reported with other antibodies/lysates? Have any further splice variants/modified forms been reported?

IHC: In paraffin embedded Human Kidney shows staining of cellular membrane and cytoplasm in convoluted tubular cells. Recommended concentration 5-10µg/ml.

Species Reactivity

Tested: Human

Expected from sequence similarity: Human, Mouse, Rat, Cow



EB06853 (5µg/ml) staining of paraffin embedded Human Kidney. Steamed antigen retrieval with citrate buffer pH 6, AP-staining.