



## UK Office

### Everest Biotech Ltd

Cherwell Innovation Centre  
77 Heyford Park  
Upper Heyford  
Oxfordshire  
OX25 5HD  
UK

Enquiries:

[info@everestbiotech.com](mailto:info@everestbiotech.com)

Sales:

[sales@everestbiotech.com](mailto:sales@everestbiotech.com)

Tech support:

[support@everestbiotech.com](mailto:support@everestbiotech.com)

Tel: +44 (0)1869 238326

Fax: +44 (0)1869 238327

## US Office

### Everest Biotech c/o Abcore

405 Maple Street, Suite A106  
Ramona,  
CA 92065  
USA

Inquiries:

[info@everestbiotech.com](mailto:info@everestbiotech.com)

Sales:

[usasales@everestbiotech.com](mailto:usasales@everestbiotech.com)

Tech support:

[support@everestbiotech.com](mailto:support@everestbiotech.com)

Tel: 888-320-4628 (toll-free)

Fax: 888-841-9041

[www.everestbiotech.com](http://www.everestbiotech.com)

**Research Use Only. Not for  
diagnostic or therapeutic use.**

## EB07869 - Goat Anti-ribosomal protein L8 Antibody

Size: 100µg specific antibody in 200µl



### Target Protein

**Principal Names:** ribosomal protein L8, 60S ribosomal protein L8, RPL8, L8

**Official Symbol:** RPL8

**Accession Number(s):** NP\_000964.1

**Human GeneID(s):** [6132](#)

**Non-Human GeneID(s):** 26961 (mouse), 26962 (rat)

**Important Comments:** The reported variants represent identical protein (NP\_000964.1 and NP\_150644.1).

### Immunogen

Peptide with sequence KAGRAYHKYKAKRNC, from the internal region of the protein sequence according to NP\_000964.1.

Please note the [peptide](#) is available for sale.

### Purification and Storage

Purified from goat serum by ammonium sulphate precipitation followed by antigen affinity chromatography using the immunizing peptide.

Supplied at 0.5 mg/ml in Tris saline, 0.02% sodium azide, pH7.3 with 0.5% bovine serum albumin.

Aliquot and store at -20°C. Minimize freezing and thawing.

### Applications Tested

**Peptide ELISA:** antibody detection limit dilution 1:128000.

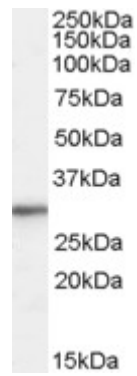
**Western blot:** Approx 28-30kDa band observed in lysates of cell line HepG2 (calculated MW of 28.0kDa according to NP\_000964.1 and NP\_150644.1). Recommended concentration: 0.01-0.03µg/ml. Primary incubation was 1 hour.

**IHC:** Paraffin embedded Human Cerebral Cortex and Spleen. Recommended concentration: 2.5µg/ml.

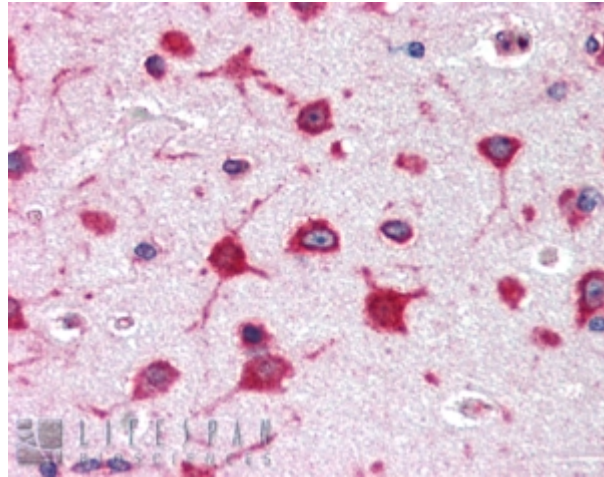
### Species Reactivity

**Tested:** Human

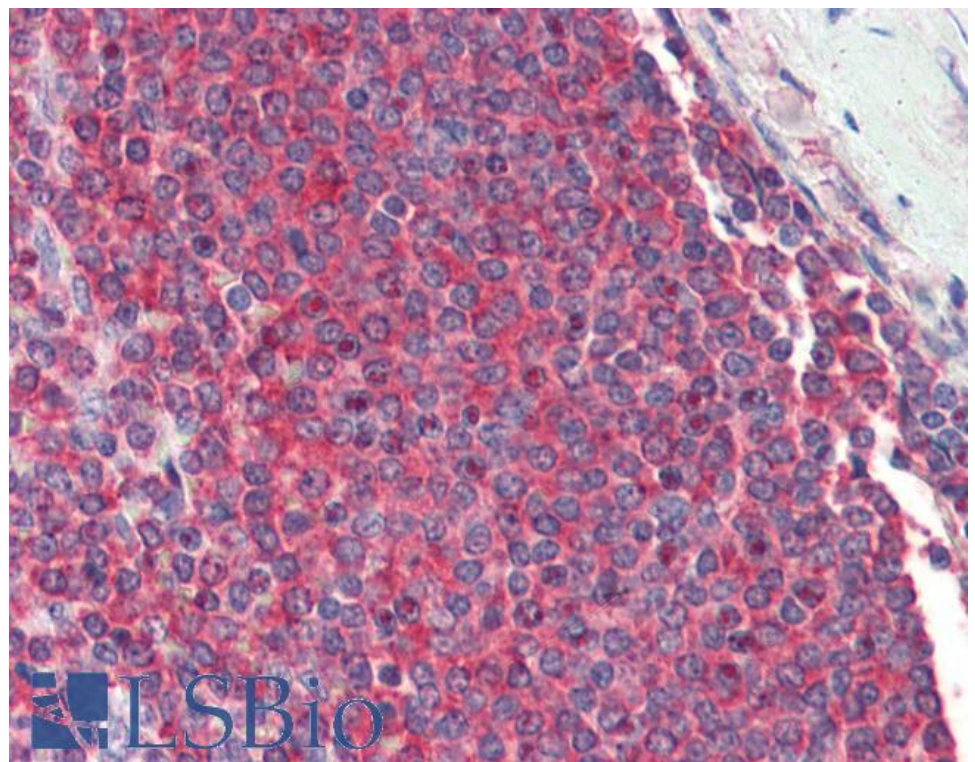
**Expected from sequence similarity:** Human, Mouse, Rat, Dog



EB07869 (0.01µg/ml) staining of HepG2 cell lysate (35µg protein in RIPA buffer). Detected by chemiluminescence.



EB07869 (2.5µg/ml) staining of paraffin embedded Human Cerebral Cortex. Steamed antigen retrieval with citrate buffer pH 6, AP-staining.



EB07869 (2.5µg/ml) staining of paraffin embedded Human Spleen. Steamed antigen retrieval with citrate buffer pH 6, AP-staining.