



## UK Office

### Everest Biotech Ltd

Cherwell Innovation Centre  
77 Heyford Park  
Upper Heyford  
Oxfordshire  
OX25 5HD  
UK

Enquiries:

[info@everestbiotech.com](mailto:info@everestbiotech.com)

Sales:

[sales@everestbiotech.com](mailto:sales@everestbiotech.com)

Tech support:

[support@everestbiotech.com](mailto:support@everestbiotech.com)

Tel: +44 (0)1869 238326

[www.everestbiotech.com](http://www.everestbiotech.com)

**Research Use Only. Not for  
diagnostic or therapeutic use.**

## EB07869-B - Goat Anti-ribosomal protein L8, Biotinylated Antibody

Size: 100µg specific antibody in 200µl



### Target Protein

**Principal Names:** RPL8, ribosomal protein L8, L8, 60S ribosomal protein L8

**Official Symbol:** RPL8

**Accession Number(s):** NP\_000964.1

**Human GeneID(s):** [6132](#)

**Non-Human GeneID(s):** 26961 (mouse), 26962 (rat)

**Important Comments:** Reported variants represent identical protein: NP\_000964.1, NP\_150644.1, NP\_001304700.1, NP\_001304711.1

### Immunogen

Peptide with sequence KAGRAYHKYKAKRNC., from the internal region of the protein sequence according to NP\_000964.1.

Please note the [peptide](#) is available for sale.

### Purification and Storage

Purified from goat serum by ammonium sulphate precipitation followed by antigen affinity chromatography using the immunizing peptide.

Supplied at 0.5 mg/ml in Tris saline, 0.02% sodium azide, pH7.3 with 0.5% bovine serum albumin.

Aliquot and store at -20°C. Minimize freezing and thawing.

### Applications Tested

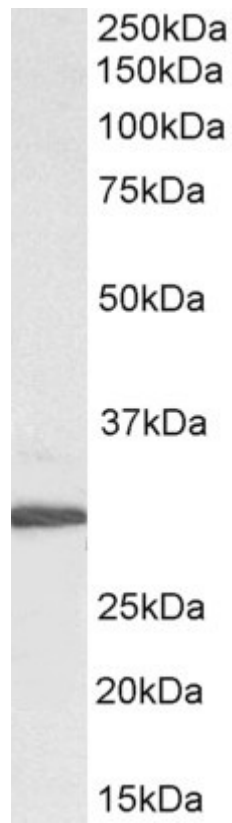
**Peptide ELISA:** antibody detection limit dilution 1:128000.

**Western blot:** Approx 28kDa band observed in lysates of cell line HepG2 (calculated MW of 28.0kDa according to NP\_000964.1). See non-biotinylated parental product's datasheet for further QC data. Recommended concentration: 0.1-0.3µg/ml.

### Species Reactivity

**Tested:** Human

**Expected from sequence similarity:** Human, Mouse, Rat, Dog



Biotinylated EB07869 (0.3 $\mu$ g/ml) staining of HepG2 lysate (35 $\mu$ g protein in RIPA buffer), exactly mirroring its parental non-biotinylated product. Primary incubation was 1 hour. Detected by chemiluminescence, using streptavidin-HRP and using NAP blocker as a substitute for skimmed milk.