

UK Office

Everest Biotech Ltd

Cherwell Innovation Centre
77 Heyford Park
Upper Heyford
Oxfordshire
OX25 5HD
UK

Enquiries:

info@everestbiotech.com

Sales:

sales@everestbiotech.com

Tech support:

support@everestbiotech.com

Tel: +44 (0)1869 238326

www.everestbiotech.com

**Research Use Only. Not for
diagnostic or therapeutic use.**

EB08552 - Goat Anti-RNF13 / RZF Antibody

Size: 100µg specific antibody in 200µl



Target Protein

Principal Names: RNF13, ring finger protein 13, MGC13689, RZF, RING zinc finger protein

Official Symbol: RNF13

Accession Number(s): NP_009213.1; NP_899237.1; NP_899239.2; NP_899240.2

Human GeneID(s): [11342](#)

Important Comments: This antibody is expected to recognize all reported isoforms (NP_009213.1, NP_899239.2; NP_899240.2).

Immunogen

Peptide with sequence HKFKKGDEYDVC, from the internal region of the protein sequence according to NP_009213.1; NP_899237.1; NP_899239.2; NP_899240.2.

Please note the [peptide](#) is available for sale.

Purification and Storage

Purified from goat serum by ammonium sulphate precipitation followed by antigen affinity chromatography using the immunizing peptide.

Supplied at 0.5 mg/ml in Tris saline, 0.02% sodium azide, pH7.3 with 0.5% bovine serum albumin.

Aliquot and store at -20°C. Minimize freezing and thawing.

Applications Tested

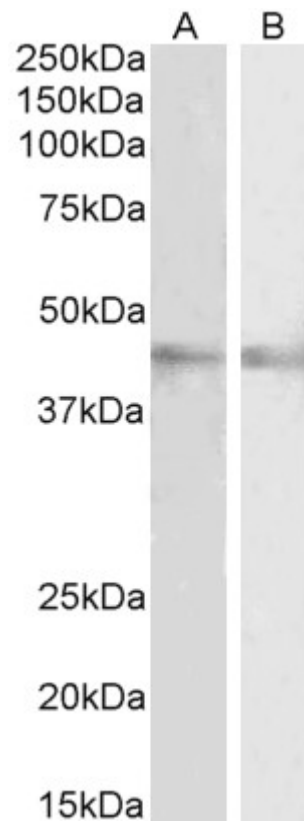
Peptide ELISA: antibody detection limit dilution 1:2000.

Western blot: Approx 45kDa band observed in Mouse Eye and in Rat Retina lysates (calculated MW of 42.8kDa according to NP_009213.1). Recommended concentration: 2-4µg/ml.

Species Reactivity

Tested: Mouse, Rat

Expected from sequence similarity: Human, Mouse, Rat, Dog, Cow



EB08552 (2 μ g/ml) staining of Mouse (A) and Rat (B) Eye lysates (35 μ g protein in RIPA buffer). Primary incubation was 1 hour. Detected by chemiluminescence