



UK Office

Everest Biotech Ltd

Cherwell Innovation Centre
77 Heyford Park
Upper Heyford
Oxfordshire
OX25 5HD
UK

Enquiries:

info@everestbiotech.com

Sales:

sales@everestbiotech.com

Tech support:

support@everestbiotech.com

Tel: +44 (0)1869 238326

Fax: +44 (0)1869 238327

US Office

Everest Biotech c/o Abcore

405 Maple Street, Suite A106
Ramona,
CA 92065
USA

Inquiries:

info@everestbiotech.com

Sales:

usasales@everestbiotech.com

Tech support:

support@everestbiotech.com

Tel: 888-320-4628 (toll-free)

Fax: 888-841-9041

www.everestbiotech.com

**Research Use Only. Not for
diagnostic or therapeutic use.**

EB05837 - Goat Anti-RNF3 (247 aa isoform) Antibody

Size: 100µg specific antibody in 200µl



Target Protein

Principal Names: RNF3, DONG1, RNF3A, MGC40413, ring finger protein 3, PCGF3, polycomb group ring finger 3, DKFZp686D20235, FLJ36550, FLJ43813, MGC129615

Official Symbol: PCGF3

Accession Number(s): NP_006306.2

Human GeneID(s): [10336](#)

Non-Human GeneID(s): 69587 (mouse)

Important Comments: This antibody is expected to recognise the 247 aa isoform only (NP_006306), not the 132 aa isoform (NP_694982).

Immunogen

Peptide with sequence C-PLLLHYRPMKMDLL, from the C Terminus of the protein sequence according to NP_006306.2.

Please note the [peptide](#) is available for sale.

Purification and Storage

Purified from goat serum by ammonium sulphate precipitation followed by antigen affinity chromatography using the immunizing peptide.

Supplied at 0.5 mg/ml in Tris saline, 0.02% sodium azide, pH7.3 with 0.5% bovine serum albumin.

Aliquot and store at -20°C. Minimize freezing and thawing.

Applications Tested

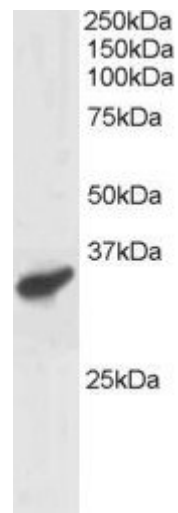
Peptide ELISA: antibody detection limit dilution 1:2000.

Western blot: Approx 35kDa band seen in Human Heart lysate [Predicted MW of approx. 27kDa according to NP_006306]. Recommended for use at 0.5-2µg/ml.

Species Reactivity

Tested: Human

Expected from sequence similarity: Human, Mouse, Dog, Cow



EB05837 staining (1 μ g/ml) of Human Heart lysate (RIPA buffer, 30 μ g total protein per lane). Primary incubated for 1 hour. Detected by western blot using chemiluminescence.