



UK Office

Everest Biotech Ltd

Cherwell Innovation Centre
77 Heyford Park
Upper Heyford
Oxfordshire
OX25 5HD
UK

Enquiries:

info@everestbiotech.com

Sales:

sales@everestbiotech.com

Tech support:

support@everestbiotech.com

Tel: +44 (0)1869 238326

Fax: +44 (0)1869 238327

US Office

Everest Biotech c/o Abcore

405 Maple Street, Suite A106
Ramona,
CA 92065
USA

Inquiries:

info@everestbiotech.com

Sales:

usasales@everestbiotech.com

Tech support:

support@everestbiotech.com

Tel: 888-320-4628 (toll-free)

Fax: 888-841-9041

www.everestbiotech.com

**Research Use Only. Not for
diagnostic or therapeutic use.**

EB05894 - Goat Anti-RNF36 / TRIM69 Antibody

Size: 100µg specific antibody in 200µl



Target Protein

Principal Names: TRIM69, tripartite motif-containing 69, HSD34, RNF36, Trif, ring finger protein 36, trimless, tripartite motif protein 69, hCG_39321, RNF36

Official Symbol: TRIM69

Accession Number(s): NP_892030.3; NP_542783.2

Human GeneID(s): [140691](#)

Important Comments: This antibody is expected to recognize both reported isoforms (NP_892030.3; NP_542783.2).

Immunogen

Peptide with sequence C-GENKEPLHILHPQ, from the C Terminus of the protein sequence according to NP_892030.3; NP_542783.2.

Please note the [peptide](#) is available for sale.

Purification and Storage

Purified from goat serum by ammonium sulphate precipitation followed by antigen affinity chromatography using the immunizing peptide.

Supplied at 0.5 mg/ml in Tris saline, 0.02% sodium azide, pH7.3 with 0.5% bovine serum albumin.

Aliquot and store at -20°C. Minimize freezing and thawing.

Applications Tested

Peptide ELISA: antibody detection limit dilution 1:32000.

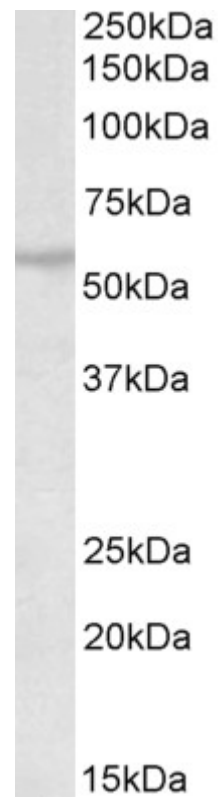
Western blot: Approx 55kDa band observed in Mouse Testis lysates (calculated MW of 57.3kDa according to Mouse NP_536771.2). Recommended concentration: 0.5-2µg/ml.

IHC: Paraffin embedded Human Testis and Brain (Cerebellum). Recommended concentration: 2.5µg/ml.

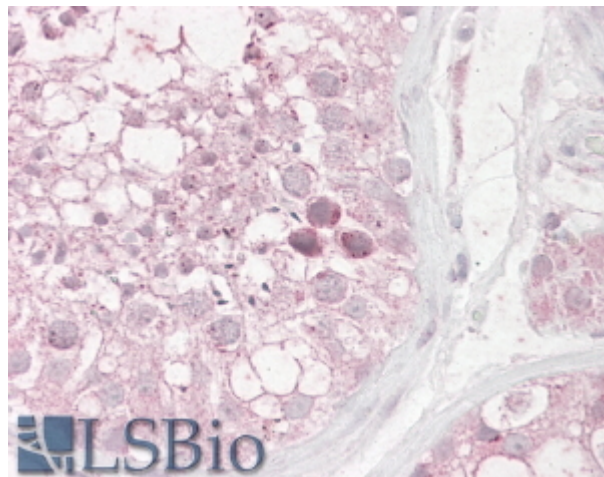
Species Reactivity

Tested: Human, Mouse

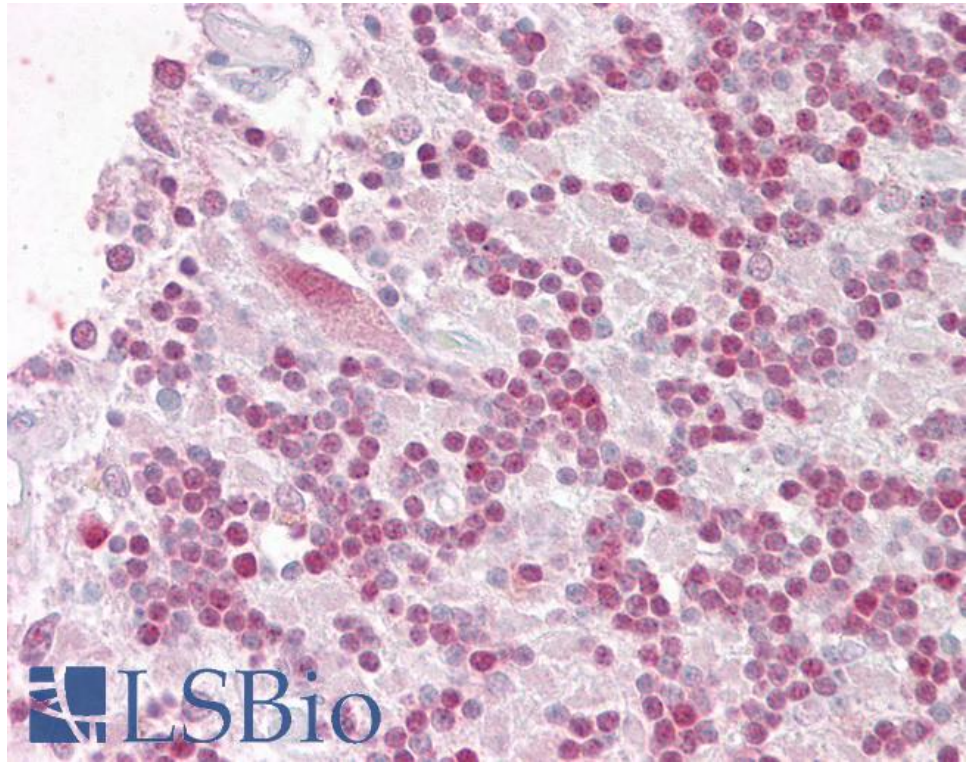
Expected from sequence similarity: Human, Mouse, Rat, Dog, Pig, Cow



EB05894 (0.5µg/ml) staining of Mouse Testis lysate (35µg protein in RIPA buffer). Primary incubation was 1 hour. Detected by chemiluminescence.



EB05894 (2.5µg/ml) staining of paraffin embedded Human Testis. Steamed antigen retrieval with citrate buffer pH 6, AP-staining.



EB05894 (2.5µg/ml) staining of paraffin embedded Human Cerebellum. Steamed antigen retrieval with citrate buffer pH 6, AP-staining.