



Everest Biotech Ltd
Cherwell Innovation Centre
77 Heyford Park
Upper Heyford
Oxfordshire
OX25 5HD, United Kingdom

everestbiotech.com

sales@everestbiotech.com

support@everestbiotech.com

Tel +44 1869 238326

Fax +44 1869 238327

Research Use Only. Not for diagnostic or therapeutic use.

Storage: For long-term storage keep aliquots at -20°C. (Store no longer than 12 months at 4°C). Minimize freezing and thawing.

EB05820 - Goat Anti-RNF39 / LIRF Antibody

Size: 100µg specific antibody in 200µl



Target Protein

Principal Names: HZFW, HZF, DADB-60O11.8, LTP (long-term potentiation) induced RING finger protein, HZFW1 protein, HZFW1, ring finger protein 39, LIRF, RNF39

Official Symbol: RNF39

Accession Number(s): NP_079512.1; NP_739575.1

Human GeneID(s): [80352](#)

Non-Human GeneID(s): 171387 (rat)

Important Comments: This antibody is expected to recognize 2 of the 3 reported isoforms (NP_079512.1 and NP_739575.1 but not NP_739576.1)

Immunogen

Peptide with sequence CDPRAPLRIVPAES, from the C Terminus of the protein sequence according to NP_079512.1; NP_739575.1.

Please note the [peptide](#) is available for sale.

Purification and Storage

Purified from goat serum by ammonium sulphate precipitation followed by antigen affinity chromatography using the immunizing peptide.

Supplied at 0.5 mg/ml in Tris saline, 0.02% sodium azide, pH7.3 with 0.5% bovine serum albumin.

Aliquot and store at -20°C. Minimize freezing and thawing.

Applications Tested

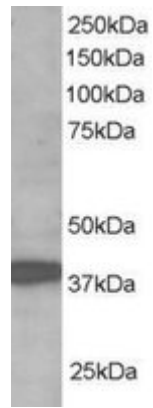
Peptide ELISA: antibody detection limit dilution 1:16000.

Western blot: Approx 40kDa band observed in human brain lysates (predicted MWs of 41kDa and 48kDa according to NP_079512.1 and NP_739575.1). Recommended for use at 1-3µg/ml.

Species Reactivity

Tested: Human

Expected from sequence similarity: Human, Rat, Pig



EB05820 staining (1 μ g/ml) of human brain lysate (RIPA buffer, 35 μ g total protein per lane). Primary incubated for 1 hour. Detected by western blot using chemiluminescence.