



UK Office

Everest Biotech Ltd

Cherwell Innovation Centre
77 Heyford Park
Upper Heyford
Oxfordshire
OX25 5HD
UK

Enquiries:

info@everestbiotech.com

Sales:

sales@everestbiotech.com

Tech support:

support@everestbiotech.com

Tel: +44 (0)1869 238326

Fax: +44 (0)1869 238327

US Office

Everest Biotech c/o Abcore

405 Maple Street, Suite A106
Ramona,
CA 92065
USA

Inquiries:

info@everestbiotech.com

Sales:

usasales@everestbiotech.com

Tech support:

support@everestbiotech.com

Tel: 888-320-4628 (toll-free)

Fax: 888-841-9041

www.everestbiotech.com

**Research Use Only. Not for
diagnostic or therapeutic use.**

EB05843 - Goat Anti-RNF8 Antibody

Size: 100µg specific antibody in 200µl



Target Protein

Principal Names: RNF8, ring finger protein 8, ring finger protein (C3HC4 type) 8, KIAA0646, FLJ12013, C3HC4-type zinc finger protein, OTTHUMP00000039684, UBC13/UEV-interacting ring finger protein

Official Symbol: RNF8

Accession Number(s): NP_003949.1; NP_898901.1

Human GeneID(s): [9025](#)

Important Comments: This antibody is expected to recognize both reported isoforms (NP_003949.1 and NP_898901.1).

Immunogen

Peptide with sequence GEPGFFVTGDRA-C, from the N Terminus of the protein sequence according to NP_003949.1; NP_898901.1.

Please note the [peptide](#) is available for sale.

Purification and Storage

Purified from goat serum by ammonium sulphate precipitation followed by antigen affinity chromatography using the immunizing peptide.

Supplied at 0.5 mg/ml in Tris saline, 0.02% sodium azide, pH7.3 with 0.5% bovine serum albumin.

Aliquot and store at -20°C. Minimize freezing and thawing.

Applications Tested

Peptide ELISA: antibody detection limit dilution 1:128000.

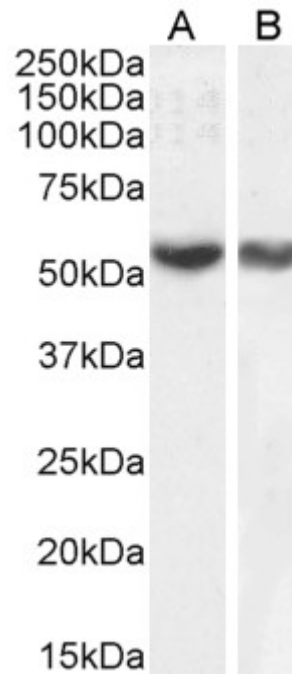
Western blot: Approx 55kDa band observed in Human Testis and Lung lysates and approx. 50kDa in nuclear lysates of cell lines HepG2 and Jurkat (predicted MW of 56kDa according to NP_003949.1 and 50.8kDa according to NP_898901.1). Recommended concentration 0.5-2µg/ml. Primary incubation 1 hour at room temperature.

Flow Cytometry: Flow cytometric analysis of HeLa cells. Recommended concentration: 10ug/ml.

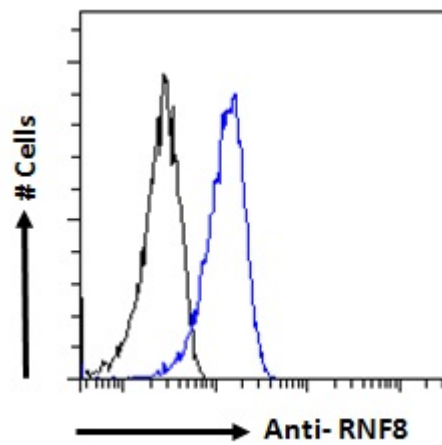
Species Reactivity

Tested: Human

Expected from sequence similarity: Human



EB05843 (1 μ g/ml) staining of HepG2 (A) and Jurkat (B) nuclear cell lysate. (35 μ g protein in RIPA buffer).
Detected by chemiluminescence.



EB05843 Flow cytometric analysis of paraformaldehyde fixed HeLa cells (blue line), permeabilized with 0.5% Triton. Primary incubation 1hr (10 μ g/ml) followed by Alexa Fluor 488 secondary antibody (1 μ g/ml). IgG control: Unimmunized goat IgG (black line) followed by Alexa Fluor 488 secondary antibody.