



## UK Office

### Everest Biotech Ltd

Cherwell Innovation Centre  
77 Heyford Park  
Upper Heyford  
Oxfordshire  
OX25 5HD  
UK

Enquiries:

[info@everestbiotech.com](mailto:info@everestbiotech.com)

Sales:

[sales@everestbiotech.com](mailto:sales@everestbiotech.com)

Tech support:

[support@everestbiotech.com](mailto:support@everestbiotech.com)

Tel: +44 (0)1869 238326

[www.everestbiotech.com](http://www.everestbiotech.com)

**Research Use Only. Not for  
diagnostic or therapeutic use.**

## EB08226 - Goat Anti-ROBO2 Antibody

Size: 100µg specific antibody in 200µl



### Target Protein

**Principal Names:** ROBO2, roundabout, axon guidance receptor, homolog 2 (Drosophila), KIAA1568, SAX3, roundabout, axon guidance receptor, homolog 2

**Official Symbol:** ROBO2

**Accession Number(s):** NP\_002933.1

**Human GeneID(s):** [6092](#)

**Non-Human GeneID(s):** 268902 (mouse), 84409 (rat)

### Immunogen

Peptide with sequence C-NQSQRPRPTKKHK, from the internal region (near the C Terminus) of the protein sequence according to NP\_002933.1.

Please note the [peptide](#) is available for sale.

### Purification and Storage

Purified from goat serum by ammonium sulphate precipitation followed by antigen affinity chromatography using the immunizing peptide.

Supplied at 0.5 mg/ml in Tris saline, 0.02% sodium azide, pH7.3 with 0.5% bovine serum albumin.

Aliquot and store at -20°C. Minimize freezing and thawing.

### Applications Tested

**Peptide ELISA:** antibody detection limit dilution 1:16000.

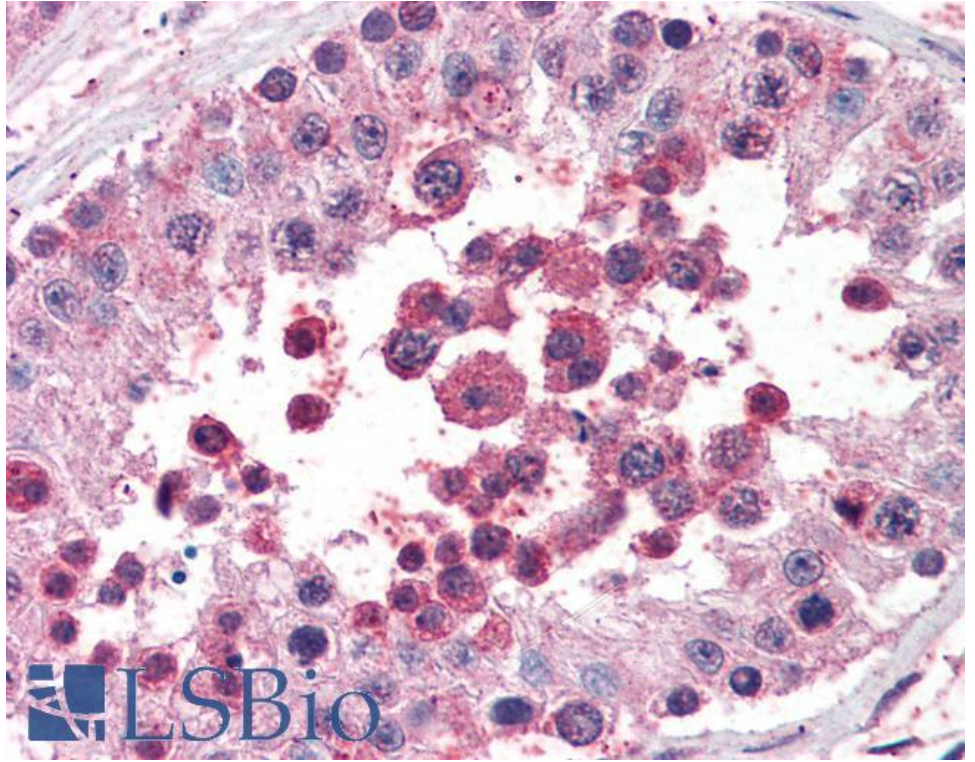
**Western blot:** Preliminary experiments gave an approx. 75kDa band in Human Brain (Amygdala) lysates after 0.3µg/ml antibody staining. Please note that currently we cannot find an explanation in the literature for the band we observe given the calculated size of 151kDa according to NP\_002933.1. The 75kDa band was successfully blocked by incubation with the immunizing peptide.

**IHC:** Paraffin embedded Human Testis. Recommended concentration: 5µg/ml.

### Species Reactivity

**Tested:** Human

**Expected from sequence similarity:** Human, Mouse, Rat, Dog



EB08226 (5µg/ml) staining of paraffin embedded Human Testis. Steamed antigen retrieval with citrate buffer pH 6, AP-staining.