



UK Office

Everest Biotech Ltd

Cherwell Innovation Centre
77 Heyford Park
Upper Heyford
Oxfordshire
OX25 5HD
UK

Enquiries:

info@everestbiotech.com

Sales:

sales@everestbiotech.com

Tech support:

support@everestbiotech.com

Tel: +44 (0)1869 238326

www.everestbiotech.com

**Research Use Only. Not for
diagnostic or therapeutic use.**

EB10749 - Goat Anti-RORC (aa200-212) Antibody

Size: 100µg specific antibody in 200µl



Target Protein

Principal Names: RORC, RAR-related orphan receptor C, MGC129539, NR1F3, RORG, RZR-GAMMA, RZRG, TOR, RAR-related orphan receptor C, isoform a, nuclear receptor ROR-gamma, nuclear receptor RZR-gamma, nuclear receptor subfamily 1 group F member 1

Official Symbol: RORC

Accession Number(s): NP_005051.2; NP_001001523.1

Human GeneID(s): [6097](#)

Non-Human GeneID(s): 19885 (mouse)

Important Comments: This antibody is expected to recognize both reported isoforms (NP_005051.2; NP_001001523.1).

Immunogen

Peptide with sequence CHLEYSPEKGAEE, from the internal region of the protein sequence according to NP_005051.2; NP_001001523.1.

Please note the [peptide](#) is available for sale.

Purification and Storage

Purified from goat serum by ammonium sulphate precipitation followed by antigen affinity chromatography using the immunizing peptide.

Supplied at 0.5 mg/ml in Tris saline, 0.02% sodium azide, pH7.3 with 0.5% bovine serum albumin.

Aliquot and store at -20°C. Minimize freezing and thawing.

Applications Tested

Peptide ELISA: antibody detection limit dilution 1:16000.

Western blot: Approx 55-60kDa band observed in Human Colon, Liver and Testis lysates (calculated MW of 55.8kDa according to NP_001001523.1 and 58.2kDa according to NP_005051.2). Recommended concentration: 0.01-0.1µg/ml. Primary incubation 1 hour at room temperature.

Immunofluorescence: Strong expression of the protein seen in U2OS cells.

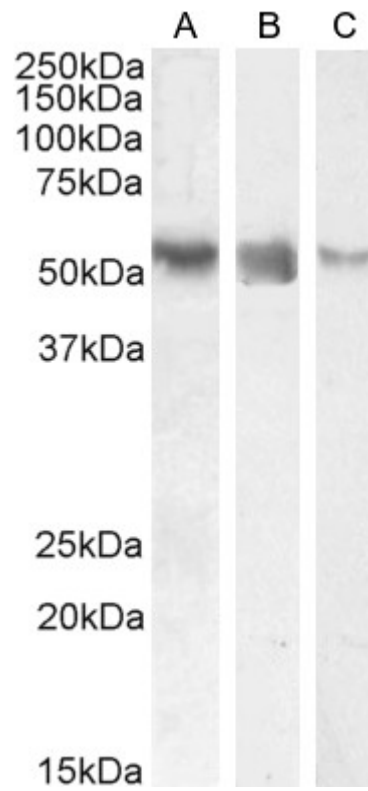
Recommended concentration: 10µg/ml.

Flow Cytometry: Flow cytometric analysis of HeLa cells. Recommended concentration: 10µg/ml.

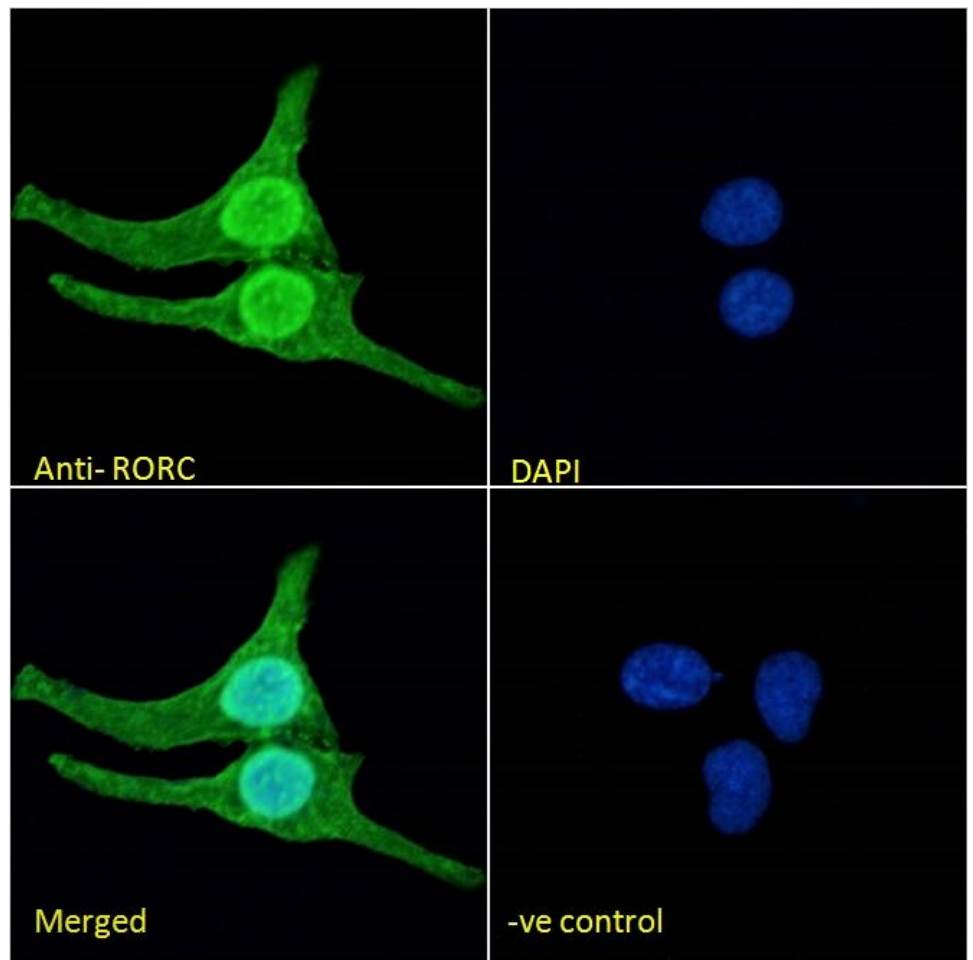
Species Reactivity

Tested: Human

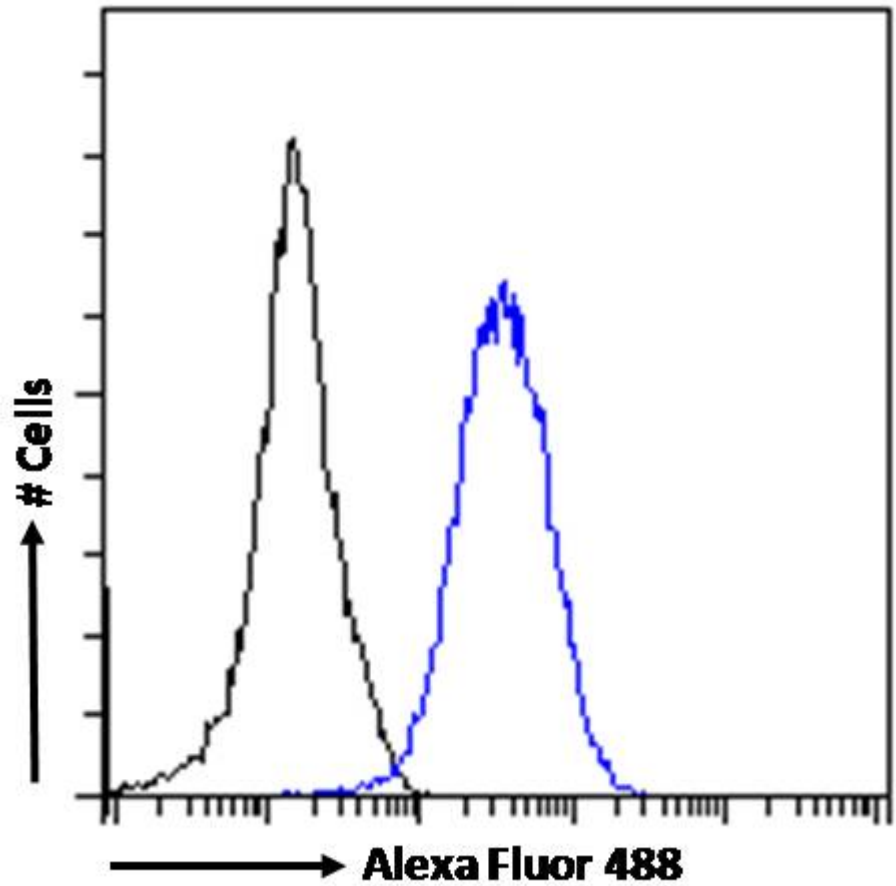
Expected from sequence similarity: Human, Mouse, Dog, Cow



EB10749 (0.1 $\mu\text{g/ml}$) staining of Human Colon (A), (0.03 $\mu\text{g/ml}$) Liver (B) and (0.01 $\mu\text{g/ml}$) Testes (C) lysate (35 μg protein in RIPA buffer). Detected by chemiluminescence.



EB10749 Immunofluorescence analysis of paraformaldehyde fixed U2OS cells, permeabilized with 0.15% Triton. Primary incubation 1hr (10ug/ml) followed by Alexa Fluor 488 secondary antibody (2ug/ml), showing nuclear, cytoplasmic and plasma membrane staining. The nuclear stain is DAPI (blue). Negative control: Unimmunized goat IgG (10ug/ml) followed by Alexa Fluor 488 secondary antibody (2ug/ml).



EB10749 Flow cytometric analysis of paraformaldehyde fixed HeLa cells (blue line), permeabilized with 0.5% Triton. Primary incubation 1hr (10ug/ml) followed by Alexa Fluor 488 secondary antibody (1ug/ml). IgG control: Unimmunized goat IgG (black line) followed by Alexa Fluor 488 secondary antibody.