



## UK Office

### Everest Biotech Ltd

Cherwell Innovation Centre  
77 Heyford Park  
Upper Heyford  
Oxfordshire  
OX25 5HD  
UK

Enquiries:

[info@everestbiotech.com](mailto:info@everestbiotech.com)

Sales:

[sales@everestbiotech.com](mailto:sales@everestbiotech.com)

Tech support:

[support@everestbiotech.com](mailto:support@everestbiotech.com)

Tel: +44 (0)1869 238326

Fax: +44 (0)1869 238327

## US Office

### Everest Biotech c/o Abcore

405 Maple Street, Suite A106  
Ramona,  
CA 92065  
USA

Inquiries:

[info@everestbiotech.com](mailto:info@everestbiotech.com)

Sales:

[usasales@everestbiotech.com](mailto:usasales@everestbiotech.com)

Tech support:

[support@everestbiotech.com](mailto:support@everestbiotech.com)

Tel: 888-320-4628 (toll-free)

Fax: 888-841-9041

[www.everestbiotech.com](http://www.everestbiotech.com)

**Research Use Only. Not for  
diagnostic or therapeutic use.**

## EB05368 - Goat Anti-MST4 Antibody

Size: 100µg specific antibody in 200µl



### Target Protein

**Principal Names:** RP6-213H19.1, serine/threonine protein kinase MST4, MASK, MST4, Mst3 and SOK1-related kinase, STE20-like kinase MST4, mammalian Ste20-like protein kinase 4, mammalian sterile 20-like 4, serine/threonine protein kinase MASK

**Official Symbol:** STK26

**Accession Number(s):** NP\_057626.2; NP\_001035918.1; NP\_001035917.1

**Important Comments:** This antibody is expected to recognize all three reported isoforms (NP\_057626.2, NP\_001035918.1 and NP\_001035917.1).

### Immunogen

Peptide with sequence KLIEKFQKCSADESP, from the C Terminus of the protein sequence according to NP\_057626.2; NP\_001035918.1; NP\_001035917.1.

Please note the [peptide](#) is available for sale.

### Purification and Storage

Purified from goat serum by ammonium sulphate precipitation followed by antigen affinity chromatography using the immunizing peptide.

Supplied at 0.5 mg/ml in Tris saline, 0.02% sodium azide, pH7.3 with 0.5% bovine serum albumin.

Aliquot and store at -20°C. Minimize freezing and thawing.

### Applications Tested

**Peptide ELISA:** antibody detection limit dilution 1:32000.

**Western blot:** Approx 50kDa band observed in lysates of Jurkat cell lines (calculated MW of 46.5kDa according to NP\_057626.2). Recommended concentration: 0.5-1.5µg/ml.

**IHC:** Paraffin embedded Human Thymus. Recommended concentration: 2.5µg/ml.

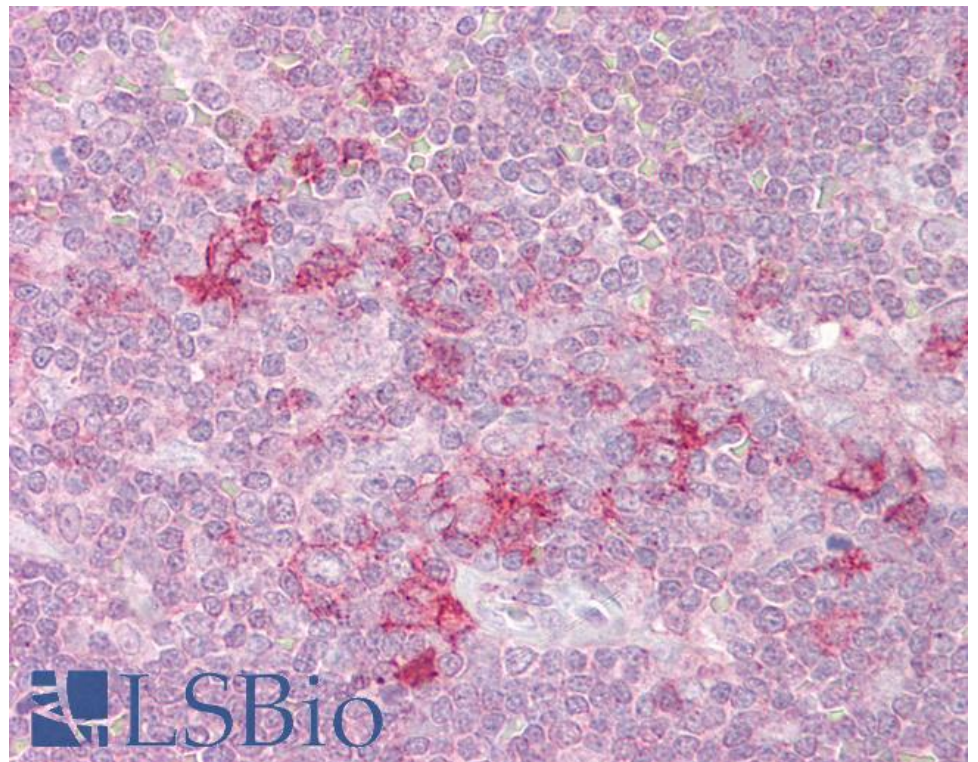
### Species Reactivity

**Tested:** Human

**Expected from sequence similarity:** Human, Mouse, Rat, Dog, Pig, Cow



EB05368 staining (0.5µg/ml) of Jurkat lysate (RIPA buffer, 35µg total protein per lane). Primary incubated for 1 hour. Detected by chemiluminescence.



EB05368 (2.5µg/ml) staining of paraffin embedded Human Thymus. Steamed antigen retrieval with citrate buffer pH 6, AP-staining.