



## UK Office

### Everest Biotech Ltd

Cherwell Innovation Centre  
77 Heyford Park  
Upper Heyford  
Oxfordshire  
OX25 5HD  
UK

Enquiries:

[info@everestbiotech.com](mailto:info@everestbiotech.com)

Sales:

[sales@everestbiotech.com](mailto:sales@everestbiotech.com)

Tech support:

[support@everestbiotech.com](mailto:support@everestbiotech.com)

Tel: +44 (0)1869 238326

[www.everestbiotech.com](http://www.everestbiotech.com)

**Research Use Only. Not for  
diagnostic or therapeutic use.**

## EB12150 - Goat Anti-RPA1 / RPA70 (aa323-337) Antibody

Size: 100µg specific antibody in 200µl



### Target Protein

**Principal Names:** RPA1, replication protein A1, 70kDa, HSSB, MST075, REPA1, RF-A, RP-A, RPA70, MSTP075, RF-A protein 1, RP-A p70, replication factor A protein 1, replication protein A 70 kDa DNA-binding subunit, single-stranded DNA-binding protein

**Official Symbol:** RPA1

**Accession Number(s):** NP\_002936.1

**Human GeneID(s):** [6117](#)

### Immunogen

Peptide with sequence CKSYEDATKIVRSN, from the internal region of the protein sequence according to NP\_002936.1.

Please note the [peptide](#) is available for sale.

### Purification and Storage

Purified from goat serum by ammonium sulphate precipitation followed by antigen affinity chromatography using the immunizing peptide.

Supplied at 0.5 mg/ml in Tris saline, 0.02% sodium azide, pH7.3 with 0.5% bovine serum albumin.

Aliquot and store at -20°C. Minimize freezing and thawing.

### Applications Tested

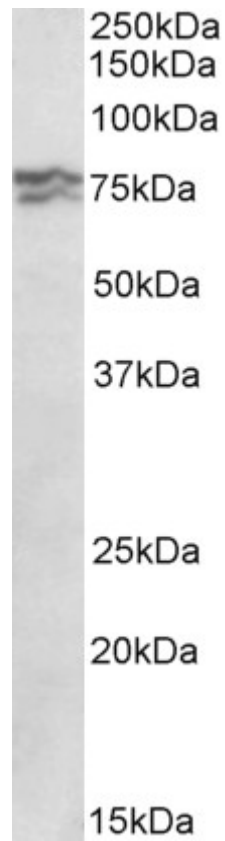
**Peptide ELISA:** antibody detection limit dilution 1:128000.

**Western blot:** Approx 70+80kDa band observed in lysates of cell line HeLa (calculated MW of 68.1kDa according to NP\_002936.1). The upper band likely represents the acetylated protein. A 75kDa band was observed in several Mouse cell lines and in lysates of Mouse Lymph Node. Recommended concentration: 0.3-1µg/ml.

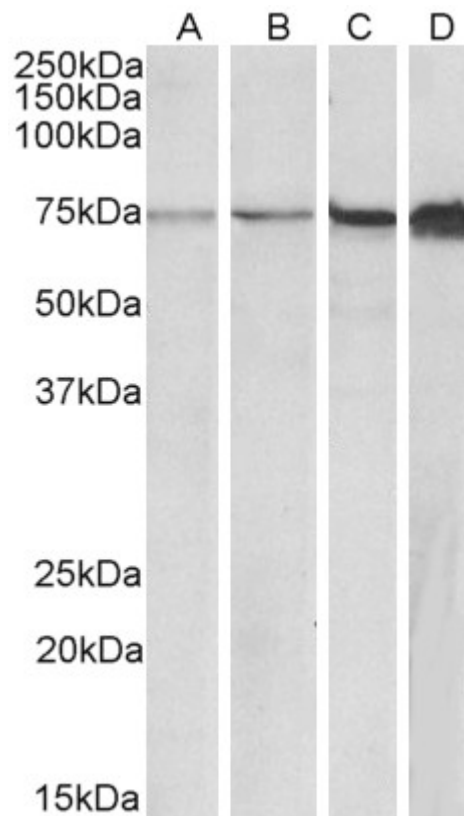
### Species Reactivity

**Tested:** Human, Mouse

**Expected from sequence similarity:** Human



EB12150 (0.3 $\mu$ g/ml) staining of HeLa lysate (35 $\mu$ g protein in RIPA buffer). Primary incubation was 1 hour.  
Detected by chemiluminescence.



EB12150 (0.5 $\mu$ g/ml) staining of NIH3T3 (A), 3T3L1 (B), Mouse Lymph Node (C) and NSO (D) lysates (35 $\mu$ g protein in RIPA buffer). Primary incubation was 1 hour. Detected by chemiluminescence.