



UK Office

Everest Biotech Ltd

Cherwell Innovation Centre
77 Heyford Park
Upper Heyford
Oxfordshire
OX25 5HD
UK

Enquiries:

info@everestbiotech.com

Sales:

sales@everestbiotech.com

Tech support:

support@everestbiotech.com

Tel: +44 (0)1869 238326

www.everestbiotech.com

**Research Use Only. Not for
diagnostic or therapeutic use.**

EB07988 - Goat Anti-RPGRIP1L Antibody

Size: 100µg specific antibody in 200µl



Target Protein

Principal Names: RPGRIP1-like, CORS3, DKFZp686C0668, JBTS7, KIAA1005, MKS5

Official Symbol: RPGRIP1L

Accession Number(s): NP_056087.2

Human GeneID(s): [23322](#)

Immunogen

Peptide with sequence C-DKENNKAKRDILK, from the internal region of the protein sequence according to NP_056087.2.

Please note the [peptide](#) is available for sale.

Purification and Storage

Purified from goat serum by ammonium sulphate precipitation followed by antigen affinity chromatography using the immunizing peptide.

Supplied at 0.5 mg/ml in Tris saline, 0.02% sodium azide, pH7.3 with 0.5% bovine serum albumin.

Aliquot and store at -20°C. Minimize freezing and thawing.

Applications Tested

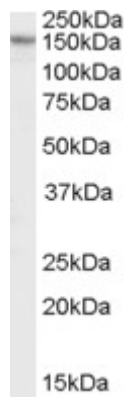
Peptide ELISA: antibody detection limit dilution 1:64000.

Western blot: Approx 150kDa band observed in Human Brain (Cerebellum) lysates (calculated MW of 151kDa according to NP_056087.2). Recommended concentration: 0.3-1µg/ml.

Species Reactivity

Tested: Human

Expected from sequence similarity: Human, Dog,



EB07988 (0.3 μ g/ml) staining of Human Brain (Cerebellum) lysate (35 μ g protein in RIPA buffer). Primary incubation was 1 hour. Detected by chemiluminescence.