



UK Office

Everest Biotech Ltd

Cherwell Innovation Centre
77 Heyford Park
Upper Heyford
Oxfordshire
OX25 5HD
UK

Enquiries:

info@everestbiotech.com

Sales:

sales@everestbiotech.com

Tech support:

support@everestbiotech.com

Tel: +44 (0)1869 238326

Fax: +44 (0)1869 238327

US Office

Everest Biotech c/o Abcore

405 Maple Street, Suite A106
Ramona,
CA 92065
USA

Inquiries:

info@everestbiotech.com

Sales:

usasales@everestbiotech.com

Tech support:

support@everestbiotech.com

Tel: 888-320-4628 (toll-free)

Fax: 888-841-9041

www.everestbiotech.com

**Research Use Only. Not for
diagnostic or therapeutic use.**

EB08865 - Goat Anti-RPS6KA2 Antibody

Size: 100µg specific antibody in 200µl



Target Protein

Principal Names: RPS6KA2, ribosomal protein S6 kinase, 90kDa, polypeptide 2, HU-2, MAPKAPK1C, RSK, RSK3, S6K-alpha, S6K-alpha2, p90-RSK3, pp90RSK3, ribosomal S6 kinase 3, ribosomal protein S6 kinase alpha 2, ribosomal protein S6 kinase, 90kD, polypeptide 2

Official Symbol: RPS6KA2

Accession Number(s): NP_066958.2; NP_001006933.1

Human GeneID(s): [6196](#)

Important Comments: This antibody is expected to recognize both reported isoforms (NP_066958.2; NP_001006933.1)

Immunogen

Peptide with sequence C-EYLSPNQLSRQDVH, from the C Terminus (near) of the protein sequence according to NP_066958.2; NP_001006933.1.

Please note the [peptide](#) is available for sale.

Purification and Storage

Purified from goat serum by ammonium sulphate precipitation followed by antigen affinity chromatography using the immunizing peptide.

Supplied at 0.5 mg/ml in Tris saline, 0.02% sodium azide, pH7.3 with 0.5% bovine serum albumin.

Aliquot and store at -20°C. Minimize freezing and thawing.

Applications Tested

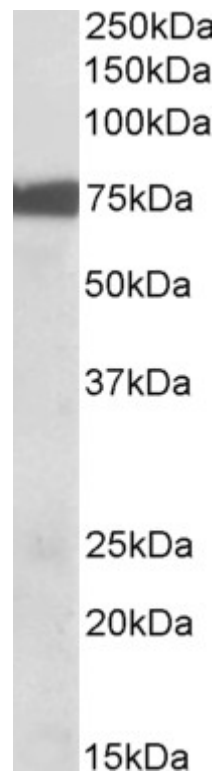
Peptide ELISA: antibody detection limit dilution 1:64000.

Western blot: Approx 75kDa band observed in Rat Lung lysates (calculated MW of 83.2kDa according to Rat NP_476469.11). Recommended concentration: 0.01-0.03µg/ml.

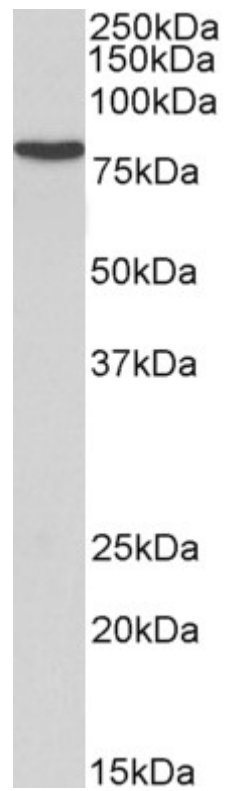
Species Reactivity

Tested: Rat

Expected from sequence similarity: Human, Mouse, Rat, Horse



EB08865 (0.01µg/ml) staining of Mouse Lung lysate (35µg protein in RIPA buffer). Primary incubation was 1 hour. Detected by chemiluminescence.



EB08865 (1µg/ml) staining of Rat Lung lysate (35µg protein in RIPA buffer). Primary incubation was 1 hour. Detected by chemiluminescence.