



## UK Office

### Everest Biotech Ltd

Cherwell Innovation Centre  
77 Heyford Park  
Upper Heyford  
Oxfordshire  
OX25 5HD  
UK

Enquiries:

[info@everestbiotech.com](mailto:info@everestbiotech.com)

Sales:

[sales@everestbiotech.com](mailto:sales@everestbiotech.com)

Tech support:

[support@everestbiotech.com](mailto:support@everestbiotech.com)

Tel: +44 (0)1869 238326

Fax: +44 (0)1869 238327

## US Office

### Everest Biotech c/o Abcore

405 Maple Street, Suite A106  
Ramona,  
CA 92065  
USA

Inquiries:

[info@everestbiotech.com](mailto:info@everestbiotech.com)

Sales:

[usasales@everestbiotech.com](mailto:usasales@everestbiotech.com)

Tech support:

[support@everestbiotech.com](mailto:support@everestbiotech.com)

Tel: 888-320-4628 (toll-free)

Fax: 888-841-9041

[www.everestbiotech.com](http://www.everestbiotech.com)

**Research Use Only. Not for  
diagnostic or therapeutic use.**

## EB13098 - Goat Anti-RSPO3 Antibody

Size: 100µg specific antibody in 200µl



### Target Protein

**Principal Names:**

**Official Symbol:** RSPO3

**Accession Number(s):** NP\_116173.2

**Human GeneID(s):** [84870](#)

### Immunogen

Peptide with sequence SGYYGTRYPDINKC, from the N Terminus of the protein sequence according to NP\_116173.2.

Please note the [peptide](#) is available for sale.

### Purification and Storage

Purified from goat serum by ammonium sulphate precipitation followed by antigen affinity chromatography using the immunizing peptide.

Supplied at 0.5 mg/ml in Tris saline, 0.02% sodium azide, pH7.3 with 0.5% bovine serum albumin.

Aliquot and store at -20°C. Minimize freezing and thawing.

### Applications Tested

**Peptide ELISA:** antibody detection limit dilution 1:128000.

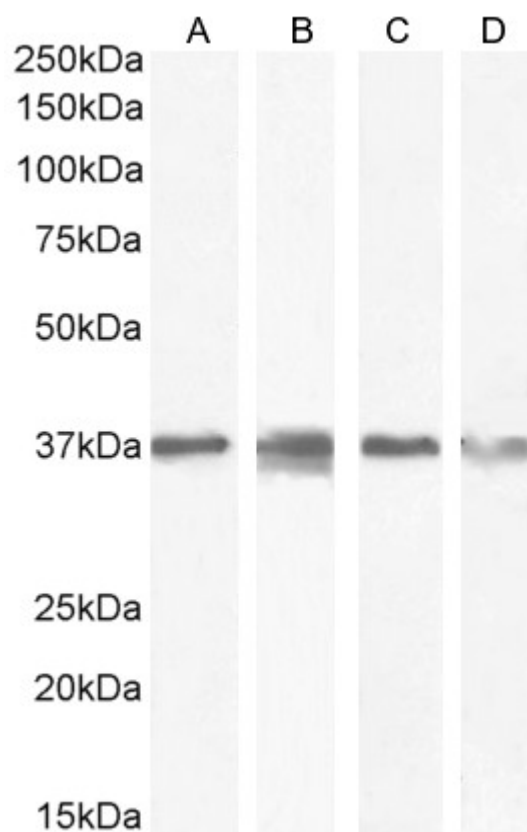
**Western blot:** Approx 37kDa band observed in lysates of cell lines HeLa, U2OS, A549 and KNRK, and in Mouse Brain lysates (calculated MW of 30.9kDa according to Human NP\_116173.2, and 31.4kDa according to Mouse NP\_082627.3, and Rat NP\_001094460.1). This molecular weight is observed by other sources, and was successfully blocked by incubation with the immunising peptide. Recommended concentration: 0.1-0.3µg/ml. Primary incubation 1 hour at room temperature.

**IHC:** Paraffin embedded Human Colon. Recommended concentration: 4-6µg/ml. Positive staining was also seen in paraffin embedded Human Kidney at 4µg/ml.

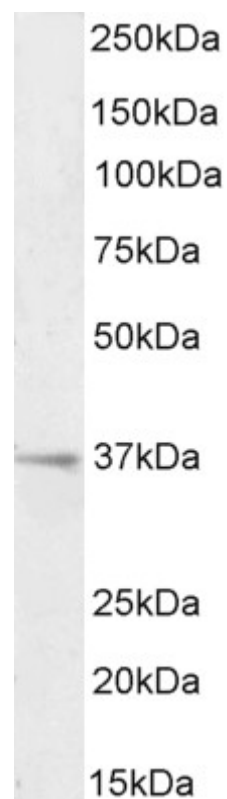
### Species Reactivity

**Tested:** Human, Mouse, Rat

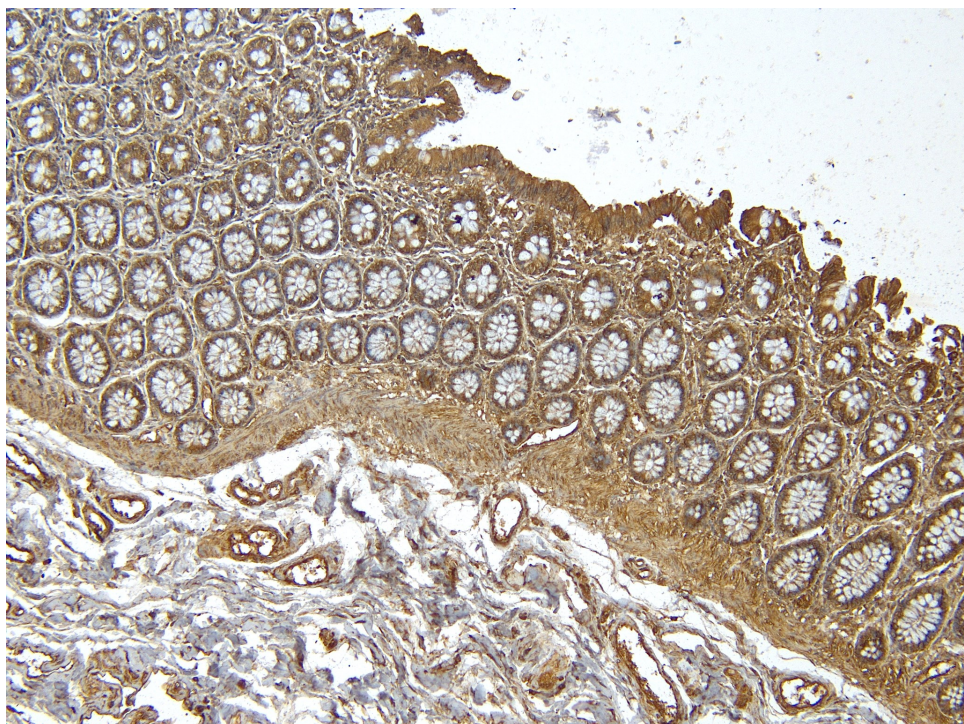
**Expected from sequence similarity:** Human, Mouse, Rat



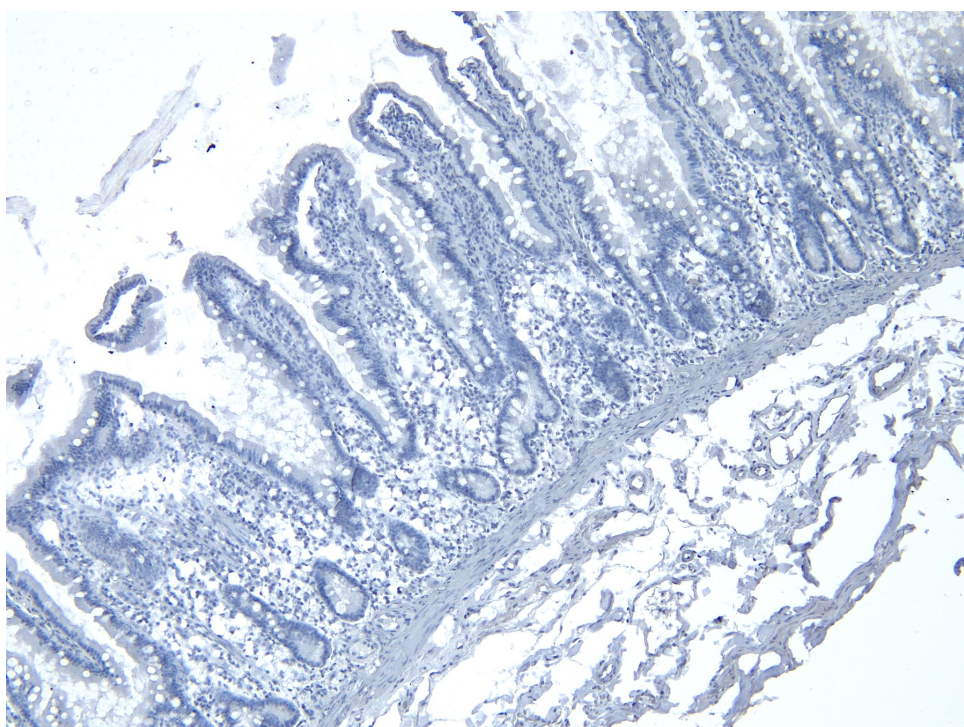
EB13098 (0.3 $\mu$ g/ml) staining of U2OS (A) and A549 (B) and (0.1 $\mu$ g/ml) HeLa (C) and KNRK (D) cell lysate (35 $\mu$ g protein in RIPA buffer). Detected by chemiluminescence.



EB13098 (0.1 $\mu$ g/ml) staining of Mouse Brain lysate (35 $\mu$ g protein in RIPA buffer). Detected by chemiluminescence.



EB13098 (4 $\mu$ g/ml) staining of paraffin embedded Human Colon. Heat induced antigen retrieval with citrate buffer pH 6, HRP-staining.



EB13098 Negative Control showing staining of paraffin embedded Human Colon, with no primary antibody.