

## UK Office

### Everest Biotech Ltd

Cherwell Innovation Centre  
77 Heyford Park  
Upper Heyford  
Oxfordshire  
OX25 5HD  
UK

Enquiries:

[info@everestbiotech.com](mailto:info@everestbiotech.com)

Sales:

[sales@everestbiotech.com](mailto:sales@everestbiotech.com)

Tech support:

[support@everestbiotech.com](mailto:support@everestbiotech.com)

Tel: +44 (0)1869 238326

[www.everestbiotech.com](http://www.everestbiotech.com)

**Research Use Only. Not for  
diagnostic or therapeutic use.**

## EB10564 - Goat Anti-RUFY1 Antibody

Size: 100µg specific antibody in 200µl



### Target Protein

**Principal Names:** RUFY1, RUN and FYVE domain containing 1, FLJ22251, RABIP4, ZFYVE12, FYVE-finger protein EIP1, OTTHUMP00000223250, RUN and FYVE domain-containing 1, RUN and FYVE domain-containing protein 1, rab4-interacting protein, zinc finger FYVE

**Official Symbol:** RUFY1

**Accession Number(s):** NP\_079434.3; NP\_001035541.1

**Human GeneID(s):** [80230](#)

**Non-Human GeneID(s):** 216724 (mouse), 360521 (rat)

**Important Comments:** This antibody is expected to recognize both reported isoforms (NP\_079434.3; NP\_001035541.1). Reported variants represent identical protein: NP\_001035542.1, NP\_001035541.1.

### Immunogen

Peptide with sequence C-QKNEAITSFEGKT, from the internal region of the protein sequence according to NP\_079434.3; NP\_001035541.1.

Please note the [peptide](#) is available for sale.

### Purification and Storage

Purified from goat serum by ammonium sulphate precipitation followed by antigen affinity chromatography using the immunizing peptide.

Supplied at 0.5 mg/ml in Tris saline, 0.02% sodium azide, pH7.3 with 0.5% bovine serum albumin.

Aliquot and store at -20°C. Minimize freezing and thawing.

### Applications Tested

**Peptide ELISA:** antibody detection limit dilution 1:32000.

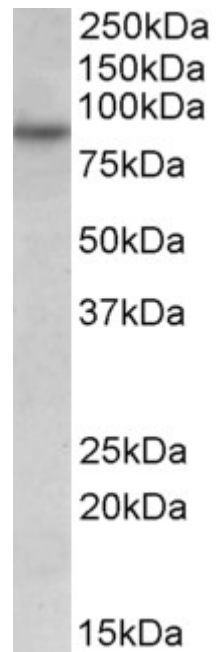
**Western blot:** Approx 85kDa band observed in lysates of cell line HeLa (calculated MW of 79.8kDa according to NP\_079434.3). Recommended concentration: 0.05-0.2µg/ml. Primary incubation was 1 hour.

**IHC:** Paraffin embedded Human Small Intestine. Recommended concentration: 5µg/ml.

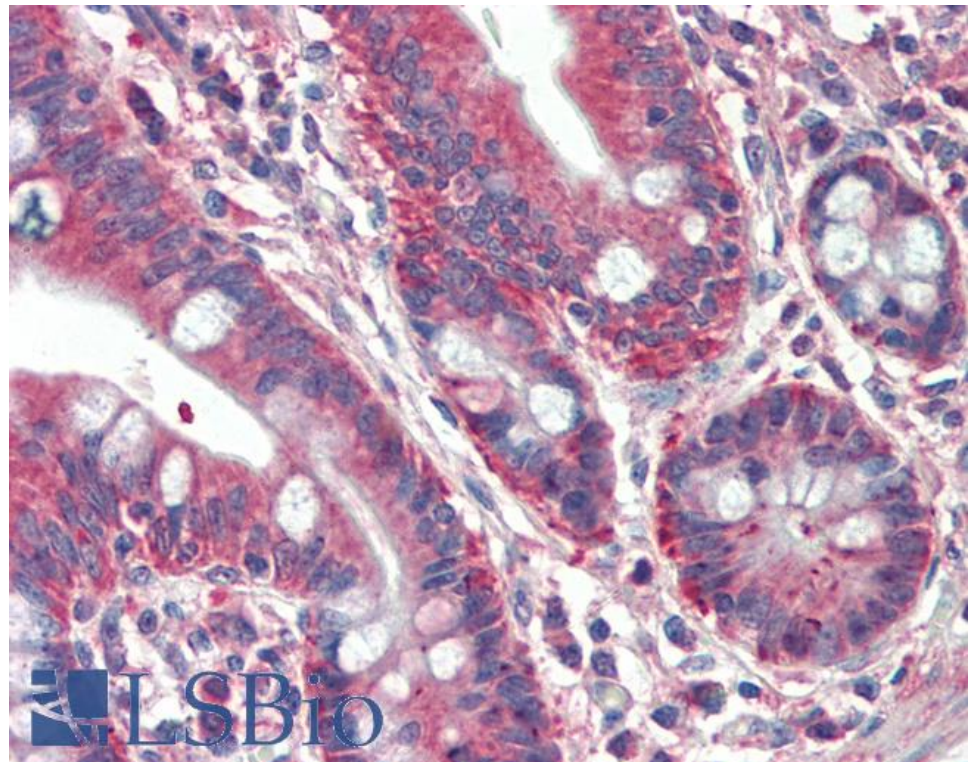
### Species Reactivity

**Tested:** Human

**Expected from sequence similarity:** Human, Mouse, Rat, Dog, Cow



EB10564 (0.05µg/ml) staining of HeLa lysate (35µg protein in RIPA buffer). Detected by chemiluminescence.



EB10564 (5µg/ml) staining of paraffin embedded Human Small Intestine. Steamed antigen retrieval with citrate buffer Ph 6, AP-staining.