



Everest Biotech Ltd
Cherwell Innovation Centre
77 Heyford Park
Upper Heyford
Oxfordshire
OX25 5HD, United Kingdom

everestbiotech.com

sales@everestbiotech.com

support@everestbiotech.com

Tel +44 1869 238326

Fax +44 1869 238327

Research Use Only. Not for diagnostic or therapeutic use.

Storage: For long-term storage keep aliquots at -20°C. (Store no longer than 12 months at 4°C). Minimize freezing and thawing.

EB06526 - Goat Anti-RXR gamma Antibody

Size: 100µg specific antibody in 200µl



Target Protein

Principal Names: retinoid X receptor, gamma, NR2B3, RXRC, RXRG

Official Symbol: RXRG

Accession Number(s): NP_008848.1

Human GeneID(s): [6258](#)

Important Comments: This antibody is expected to recognise an epitope corresponding to aa 213-226 of human RXR gamma protein (hinge region) and does not cross-react with either RXR alpha or beta.

Immunogen

Peptide with sequence RQRSRERAESAEC, from the internal region of the protein sequence according to NP_008848.1.

Please note the [peptide](#) is available for sale.

Purification and Storage

Purified from goat serum by ammonium sulphate precipitation followed by antigen affinity chromatography using the immunizing peptide.

Supplied at 0.5 mg/ml in Tris saline, 0.02% sodium azide, pH7.3 with 0.5% bovine serum albumin.

Aliquot and store at -20°C. Minimize freezing and thawing.

Applications Tested

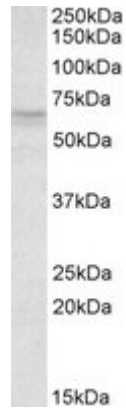
Peptide ELISA: antibody detection limit dilution 1:16000.

Western blot: Approx 65kDa band observed in lysates of cell line HeLa (calculated MW of 50.9kDa according to NP_008848.1). Recommended concentration: 1-3µg/ml.

Species Reactivity

Tested: Human

Expected from sequence similarity: Human, Mouse, Rat, Dog, Pig, Cow



EB06526 (1 μ g/ml) staining of HeLa lysate (35 μ g protein in RIPA buffer). Primary incubation was 1 hour.
Detected by chemiluminescence.