



## UK Office

### Everest Biotech Ltd

Cherwell Innovation Centre  
77 Heyford Park  
Upper Heyford  
Oxfordshire  
OX25 5HD  
UK

Enquiries:

[info@everestbiotech.com](mailto:info@everestbiotech.com)

Sales:

[sales@everestbiotech.com](mailto:sales@everestbiotech.com)

Tech support:

[support@everestbiotech.com](mailto:support@everestbiotech.com)

Tel: +44 (0)1869 238326

Fax: +44 (0)1869 238327

## US Office

### Everest Biotech c/o Abcore

405 Maple Street, Suite A106  
Ramona,  
CA 92065  
USA

Inquiries:

[info@everestbiotech.com](mailto:info@everestbiotech.com)

Sales:

[usasales@everestbiotech.com](mailto:usasales@everestbiotech.com)

Tech support:

[support@everestbiotech.com](mailto:support@everestbiotech.com)

Tel: 888-320-4628 (toll-free)

Fax: 888-841-9041

[www.everestbiotech.com](http://www.everestbiotech.com)

**Research Use Only. Not for  
diagnostic or therapeutic use.**

## EB11513 - Goat Anti-S100A8 Antibody

Size: 100µg specific antibody in 200µl



### Target Protein

**Principal Names:** 60B8AG, CAGA, calgranulin A, calgranulin-A, calprotectin L1L subunit, CFAG, CGLA, CP-10, cystic fibrosis antigen, L1Ag, leukocyte L1 complex light chain, MA387, MIF, migration inhibitory factor-related protein 8, MRP8, MRP-8, NIF, OTTHUMP00000015329, P8, protein S100-A8, S100 calcium binding protein A8, S100 calcium-binding protein A8 (calgranulin A), S100A8, urinary stone protein band A

**Official Symbol:** S100A8

**Accession Number(s):** NP\_002955.2

**Human GeneID(s):** [6279](#)

### Immunogen

Peptide with sequence C-KGADVWFKELDINT, from the internal region of the protein sequence according to NP\_002955.2.

Please note the [peptide](#) is available for sale.

### Purification and Storage

Purified from goat serum by ammonium sulphate precipitation followed by antigen affinity chromatography using the immunizing peptide.

Supplied at 0.5 mg/ml in Tris saline, 0.02% sodium azide, pH7.3 with 0.5% bovine serum albumin.

Aliquot and store at -20°C. Minimize freezing and thawing.

### Applications Tested

**Peptide ELISA:** antibody detection limit dilution 1:32000.

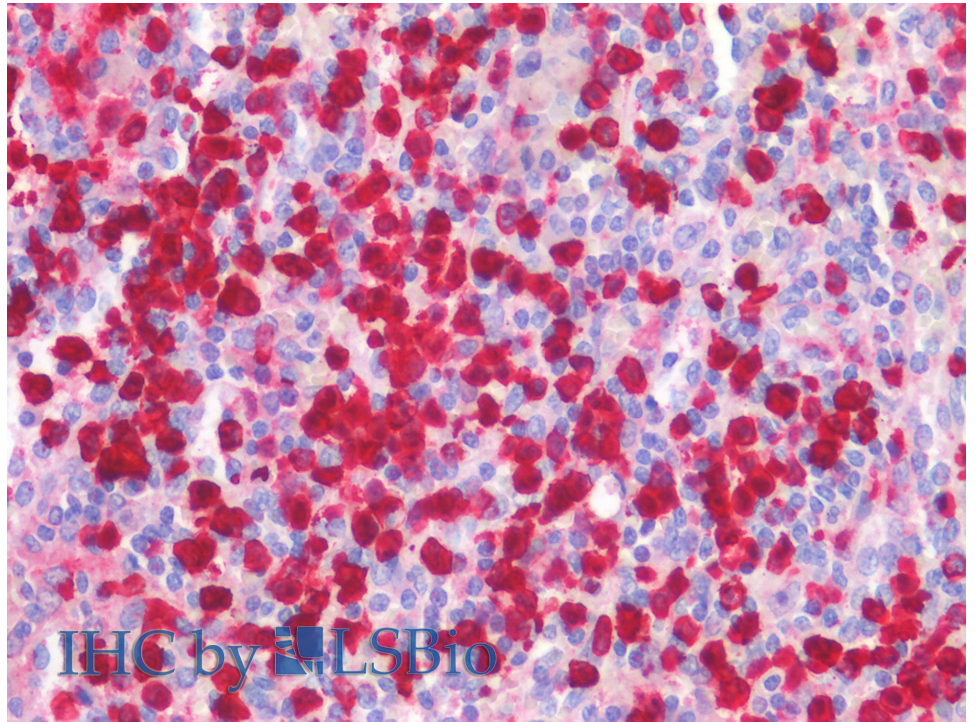
**IHC:** Paraffin embedded Human Spleen. Recommended concentration: 5µg/ml.

**Immunofluorescence:** Strong expression of the protein seen in the nuclei and cytoplasmic/extracellular of THP-1 cells. Recommended concentration: 10µg/ml.

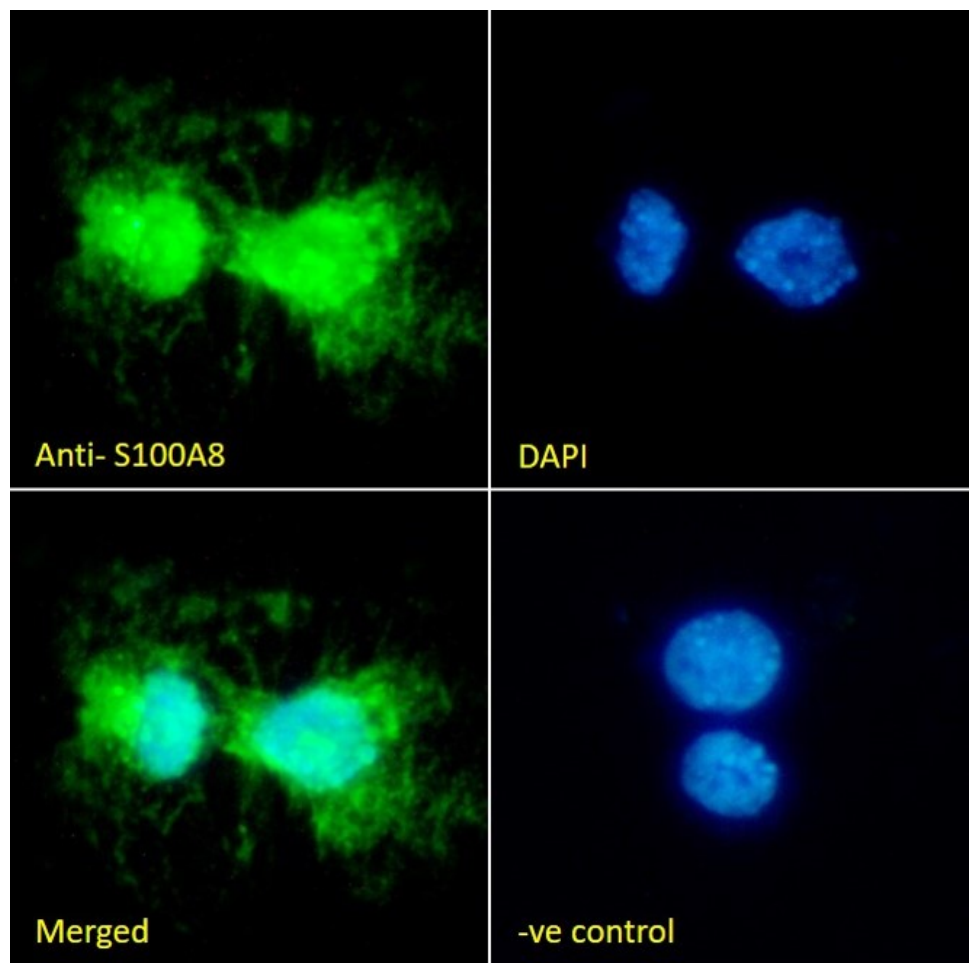
### Species Reactivity

**Tested:** Human

**Expected from sequence similarity:** Human



EB11513 (5 $\mu$ g/ml) staining of paraffin embedded Human Spleen. Steamed antigen retrieval with citrate buffer pH 6, AP-staining.



EB11513 Immunofluorescence analysis of paraformaldehyde fixed THP-1 cells immobilized on Shifix<sup>TM</sup> coverslip, permeabilized with 0.15% Triton. Primary incubation 1hr (10 $\mu$ g/ml) followed by Alexa Fluor 488 secondary antibody (2 $\mu$ g/ml), showing nuclear and cytoplasmic/extracellular staining. The nuclear stain is DAPI

(blue). Negative control: Unimmunized goat IgG (10ug/ml) followed by Alexa Fluor 488 secondary antibody (2ug/ml).