

UK Office

Everest Biotech Ltd

Cherwell Innovation Centre
77 Heyford Park
Upper Heyford
Oxfordshire
OX25 5HD
UK

Enquiries:

info@everestbiotech.com

Sales:

sales@everestbiotech.com

Tech support:

support@everestbiotech.com

Tel: +44 (0)1869 238326

www.everestbiotech.com

**Research Use Only. Not for
diagnostic or therapeutic use.**

EB12316 - Goat Anti-S100B Antibody

Size: 100µg specific antibody in 200µl



Target Protein

Principal Names: S100B, S100 calcium binding protein B, NEF, S100, S100-B, S100beta, S-100 calcium-binding protein, beta chain, S-100 protein subunit beta, S100 calcium-binding protein, beta (neural), protein S100-B

Official Symbol: S100B

Accession Number(s): NP_006263.1

Human GeneID(s): [6285](#)

Immunogen

Peptide with sequence C-SHFLEEIKEQEVVD, from the internal region of the protein sequence according to NP_006263.1.

Please note the [peptide](#) is available for sale.

Purification and Storage

Purified from goat serum by ammonium sulphate precipitation followed by antigen affinity chromatography using the immunizing peptide.

Supplied at 0.5 mg/ml in Tris saline, 0.02% sodium azide, pH7.3 with 0.5% bovine serum albumin.

Aliquot and store at -20°C. Minimize freezing and thawing.

Applications Tested

Peptide ELISA: antibody detection limit dilution 1:32000.

Western blot: Approx 10kDa band observed in Human Brain (Olfactory Bulb and Cerebellum) lysates (calculated MW of 10.7kDa according to NP_006263.1).

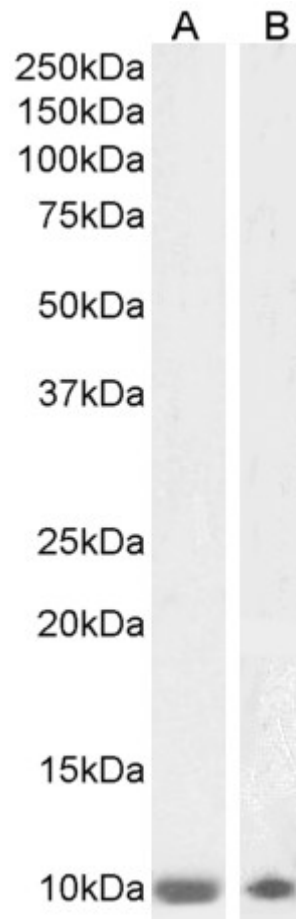
Recommended concentration: 1-3µg/ml.

IHC: Paraffin embedded Human Brain (Cortex). Recommended concentration: 5µg/ml.

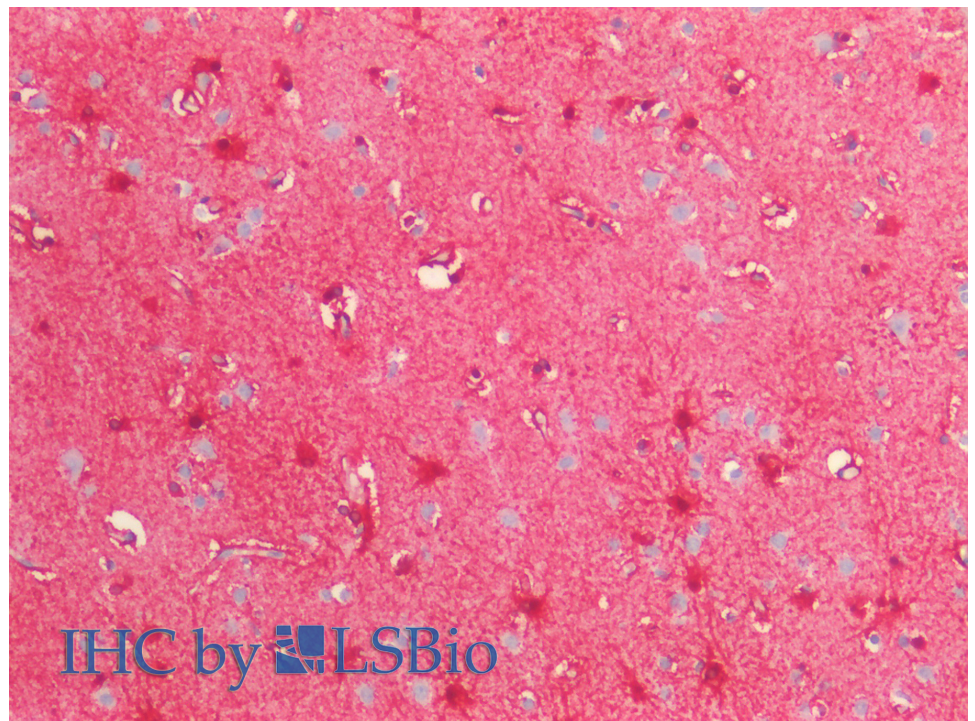
Species Reactivity

Tested: Human

Expected from sequence similarity: Human



EB12316 (1µg/ml) staining of Human Olfactory Bulb (A) and Cerebellum (B) lysates (35µg protein in RIPA buffer). Primary incubation was 1 hour. Detected by chemiluminescence.



EB12316 (5µg/ml) staining of paraffin embedded Human Cortex. Steamed antigen retrieval with citrate buffer pH 6, AP-staining.