

UK Office

Everest Biotech Ltd

Cherwell Innovation Centre
77 Heyford Park
Upper Heyford
Oxfordshire
OX25 5HD
UK

Enquiries:

info@everestbiotech.com

Sales:

sales@everestbiotech.com

Tech support:

support@everestbiotech.com

Tel: +44 (0)1869 238326

www.everestbiotech.com

**Research Use Only. Not for
diagnostic or therapeutic use.**

EB10684 - Goat Anti-Sap30l (mouse) Antibody

Size: 100µg specific antibody in 200µl



Target Protein

Principal Names: Sap30l, SAP30-like, RP23-268K22.3, 2310079P12Rik, AF006998, L55, MGC151406, MGC151408, OTTMUSP00000005883, sin3 corepressor complex subunit SAP30L, sin3-associated protein p30-like, sin3A-associated protein p30-

Official Symbol: Sap30L

Accession Number(s): NP_001074637.1

Human GeneID(s): [79685](#)

Non-Human GeneID(s): 50724 (mouse), 360531 (rat)

Immunogen

Peptide with sequence C-RLDQKSEGSKQLE, from the C Terminus of the protein sequence according to NP_001074637.1.

Please note the [peptide](#) is available for sale.

Purification and Storage

Purified from goat serum by ammonium sulphate precipitation followed by antigen affinity chromatography using the immunizing peptide.

Supplied at 0.5 mg/ml in Tris saline, 0.02% sodium azide, pH7.3 with 0.5% bovine serum albumin.

Aliquot and store at -20°C. Minimize freezing and thawing.

Applications Tested

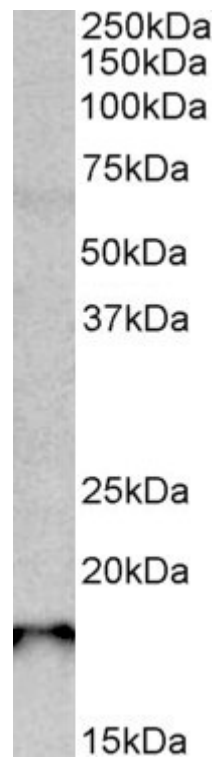
Peptide ELISA: antibody detection limit dilution 1:32000.

Western blot: Approx 18kDa band observed in Rat Spleen lysates (calculated MW of 20.8kDa according to Rat XP_340804.4). Recommended concentration: 0.3-1µg/ml.

Species Reactivity

Tested: Rat

Expected from sequence similarity: Human, Mouse, Rat, Dog



EB10684 (0.3g/ml) staining of Rat Pancreas lysate (35 μ g protein in RIPA buffer). Primary incubation was 1 hour. Detected by chemiluminescence.