



UK Office

Everest Biotech Ltd

Cherwell Innovation Centre
77 Heyford Park
Upper Heyford
Oxfordshire
OX25 5HD
UK

Enquiries:

info@everestbiotech.com

Sales:

sales@everestbiotech.com

Tech support:

support@everestbiotech.com

Tel: +44 (0)1869 238326

Fax: +44 (0)1869 238327

US Office

Everest Biotech c/o Abcore

405 Maple Street, Suite A106
Ramona,
CA 92065
USA

Inquiries:

info@everestbiotech.com

Sales:

usasales@everestbiotech.com

Tech support:

support@everestbiotech.com

Tel: 888-320-4628 (toll-free)

Fax: 888-841-9041

www.everestbiotech.com

**Research Use Only. Not for
diagnostic or therapeutic use.**

EB08906 - Goat Anti-SAR1 Antibody

Size: 100µg specific antibody in 200µl



Target Protein

Principal Names: SAR1A, SAR1 gene homolog A (S. cerevisiae), SAR1, SARA1, Sara, masra2, OTTHUMP00000060603, SAR1a gene homolog 1

Official Symbol: SAR1A

Accession Number(s): NP_064535.1

Human GeneID(s): [56681](#)

Non-Human GeneID(s): 20224 (mouse), 361842 (rat)

Immunogen

Peptide with sequence C-HSRLVESKVELNA, from the internal region of the protein sequence according to NP_064535.1.

Please note the [peptide](#) is available for sale.

Purification and Storage

Purified from goat serum by ammonium sulphate precipitation followed by antigen affinity chromatography using the immunizing peptide.

Supplied at 0.5 mg/ml in Tris saline, 0.02% sodium azide, pH7.3 with 0.5% bovine serum albumin.

Aliquot and store at -20°C. Minimize freezing and thawing.

Applications Tested

Peptide ELISA: antibody detection limit dilution 1:32000.

Western blot: Approx. 23 kDa band observed in lysates of NIH3T3 (calculated MW of 22.4 kDa according to Human NP_064535.1 and to Mouse NP_033146.1).

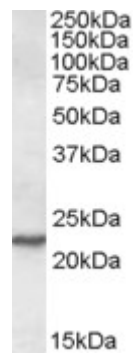
Recommended concentration: 0.1-0.3µg/ml. Primary incubation was 1 hour.

IHC: Paraffin embedded Human Skin and Small Intestine. Recommended concentration: 3.75µg/ml.

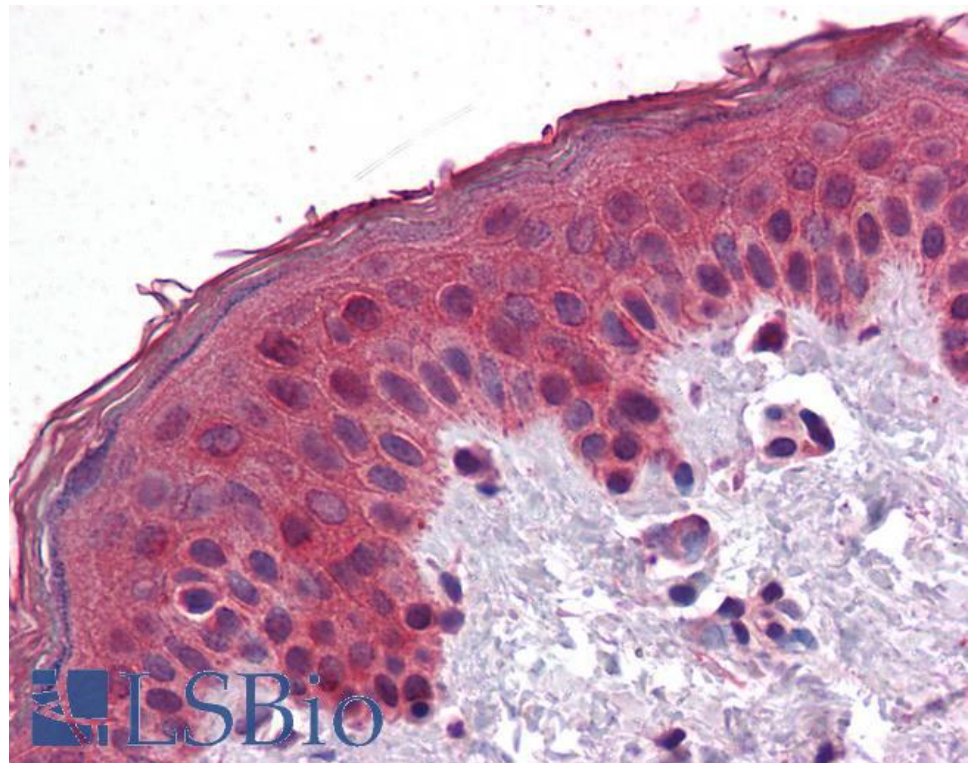
Species Reactivity

Tested: Mouse, Human

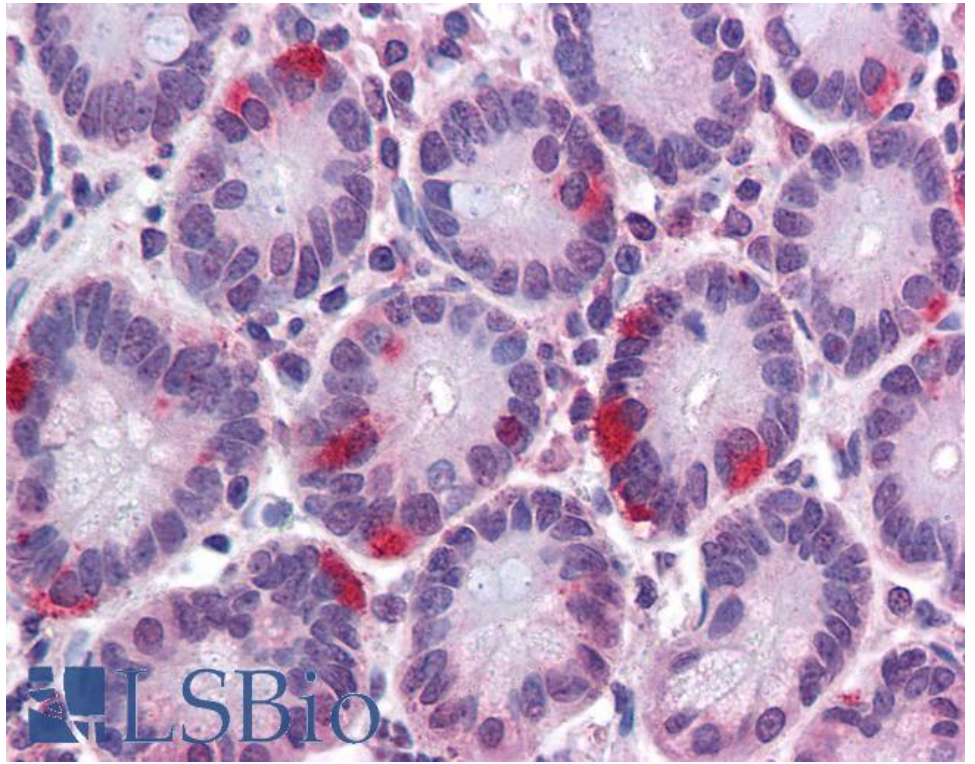
Expected from sequence similarity: Human, Mouse, Rat



EB08906 (0.1µg/ml) staining of NIH3T3 lysate (35µg protein in RIPA buffer). Detected by chemiluminescence.



EB08906 (3.75µg/ml) staining of paraffin embedded Human Skin. Steamed antigen retrieval with citrate buffer pH 6, AP-staining.



EB08906 (3.75µg/ml) staining of paraffin embedded Human Small Intestine. Steamed antigen retrieval with citrate buffer pH 6, AP-staining.