

UK Office

Everest Biotech Ltd

Cherwell Innovation Centre
77 Heyford Park
Upper Heyford
Oxfordshire
OX25 5HD
UK

Enquiries:

info@everestbiotech.com

Sales:

sales@everestbiotech.com

Tech support:

support@everestbiotech.com

Tel: +44 (0)1869 238326

www.everestbiotech.com

**Research Use Only. Not for
diagnostic or therapeutic use.**

EB07902 - Goat Anti-SAR1B / SARA2 Antibody

Size: 100µg specific antibody in 200µl



Target Protein

Principal Names: SAR1B, SARA2, SAR1 gene homolog B (*S. cerevisiae*), CMRD, GTBPB, 2310075M17Rik, GTP-binding protein Sara, SAR1a gene homolog 2

Official Symbol: SAR1B

Accession Number(s): NP_001028675.1; NP_057187.1

Human GeneID(s): [51128](#)

Non-Human GeneID(s): 66397 (mouse), 287276 (rat)

Important Comments: Both reported variants (NP_001028675.1 and NP_057187.1) represent identical protein

Immunogen

Peptide with sequence C-DHERLLESKEELD, from the internal region of the protein sequence according to NP_001028675.1; NP_057187.1.

Please note the [peptide](#) is available for sale.

Purification and Storage

Purified from goat serum by ammonium sulphate precipitation followed by antigen affinity chromatography using the immunizing peptide.

Supplied at 0.5 mg/ml in Tris saline, 0.02% sodium azide, pH7.3 with 0.5% bovine serum albumin.

Aliquot and store at -20°C. Minimize freezing and thawing.

Applications Tested

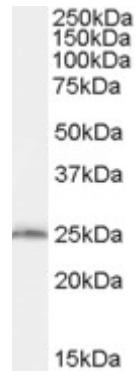
Peptide ELISA: antibody detection limit dilution 1:8000.

Western blot: Approx. 25kDa band observed in Mouse Liver and Rat Liver lysates (calculated MW of 22.4kDa according to human NP_057187.1 and mouse NP_079811.1). In transfected HEK293 transiently expressing SAR1B a band of approx. 26kDa is observed. This band is not observed in the non-transfected HEK293. Recommended concentration: 0.03-0.1µg/ml.

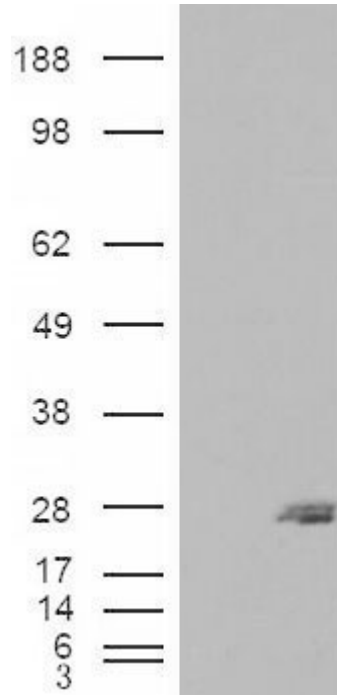
Species Reactivity

Tested: Mouse, Rat

Expected from sequence similarity: Human, Mouse, Rat,



EB07902 (0.03µg/ml) staining of Mouse Liver lysate (35µg protein in RIPA buffer). Primary incubation was 1 hour. Detected by chemiluminescence.



HEK293 overexpressing SAR1B (RC210593) and probed with EB07902 (mock transfection in first lane), tested by Origene.