



## UK Office

### Everest Biotech Ltd

Cherwell Innovation Centre  
77 Heyford Park  
Upper Heyford  
Oxfordshire  
OX25 5HD  
UK

Enquiries:

[info@everestbiotech.com](mailto:info@everestbiotech.com)

Sales:

[sales@everestbiotech.com](mailto:sales@everestbiotech.com)

Tech support:

[support@everestbiotech.com](mailto:support@everestbiotech.com)

Tel: +44 (0)1869 238326

Fax: +44 (0)1869 238327

## US Office

### Everest Biotech c/o Abcore

405 Maple Street, Suite A106  
Ramona,  
CA 92065  
USA

Inquiries:

[info@everestbiotech.com](mailto:info@everestbiotech.com)

Sales:

[usasales@everestbiotech.com](mailto:usasales@everestbiotech.com)

Tech support:

[support@everestbiotech.com](mailto:support@everestbiotech.com)

Tel: 888-320-4628 (toll-free)

Fax: 888-841-9041

[www.everestbiotech.com](http://www.everestbiotech.com)

**Research Use Only. Not for  
diagnostic or therapeutic use.**

## EB12301 - Goat Anti-SCARB1 / SR-BI (aa238-250) Antibody

Size: 100µg specific antibody in 200µl



### Target Protein

**Principal Names:** SCARB1, scavenger receptor class B, member 1, CD36L1, CLA-1, CLA1, HDLQTL6, SR-BI, SRB1, CD36 and LIMPII analogous 1, CD36 antigen (collagen type I receptor, thrombospondin receptor)-like 1, scavenger receptor class B member 1, scavenger receptor class B type III

**Official Symbol:** SCARB1

**Accession Number(s):** NP\_005496.4; NP\_001076428.1

**Human GeneID(s):** [949](#)

**Important Comments:** This antibody is expected to recognize both reported isoforms (NP\_005496.4; NP\_001076428.1).

### Immunogen

Peptide with sequence C-NGLSKVDFWHSDQ, from the internal region of the protein sequence according to NP\_005496.4; NP\_001076428.1.

Please note the [peptide](#) is available for sale.

### Purification and Storage

Purified from goat serum by ammonium sulphate precipitation followed by antigen affinity chromatography using the immunizing peptide.

Supplied at 0.5 mg/ml in Tris saline, 0.02% sodium azide, pH7.3 with 0.5% bovine serum albumin.

Aliquot and store at -20°C. Minimize freezing and thawing.

### Applications Tested

**Peptide ELISA:** antibody detection limit dilution 1:128000.

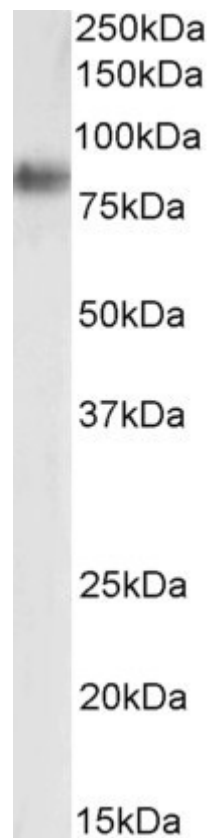
**Western blot:** Approx 85kDa band observed in Human Adrenal gland lysates (calculated MW of 57.0kDa according to NP\_005496.4). Recommended concentration: 0.01-0.03µg/ml.

**IHC:** Paraffin embedded Human Testis. Recommended concentration: 5µg/ml.

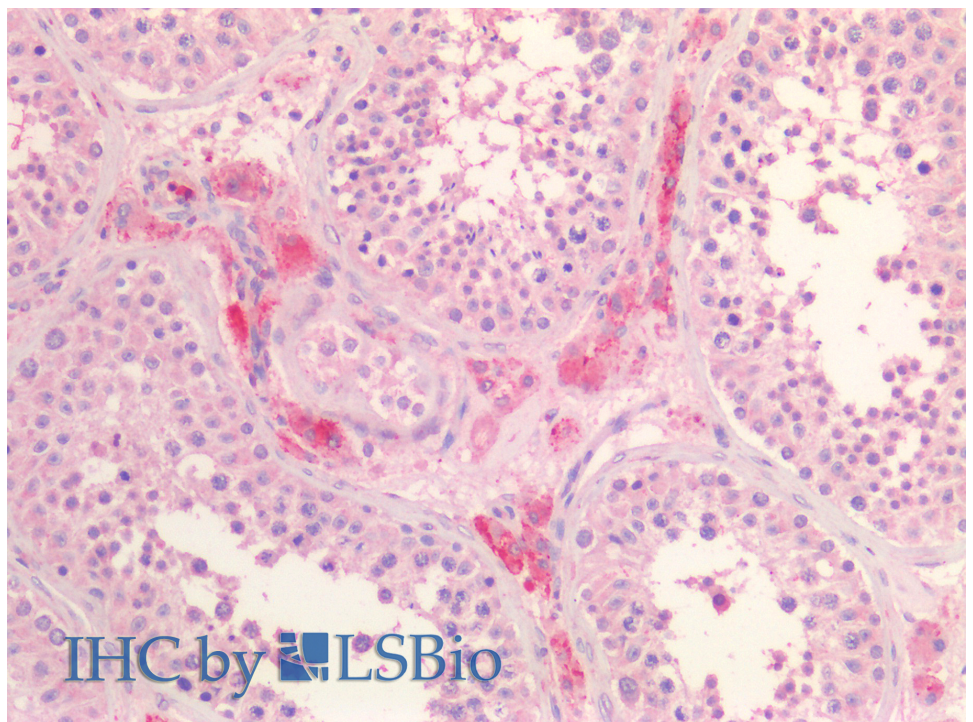
### Species Reactivity

**Tested:** Human

**Expected from sequence similarity:** Human



EB12301 (0.03µg/ml) staining of Human Adrenal Gland lysate (35µg protein in RIPA buffer). Primary incubation was 1 hour. Detected by chemiluminescence.



EB12301 (5µg/ml) staining of paraffin embedded Human Testis. Steamed antigen retrieval with citrate buffer pH 6, AP-staining.