

UK Office

Everest Biotech Ltd

Cherwell Innovation Centre
77 Heyford Park
Upper Heyford
Oxfordshire
OX25 5HD
UK

Enquiries:

info@everestbiotech.com

Sales:

sales@everestbiotech.com

Tech support:

support@everestbiotech.com

Tel: +44 (0)1869 238326

Fax: +44 (0)1869 238327

US Office

Everest Biotech c/o Abcore

405 Maple Street, Suite A106
Ramona,
CA 92065
USA

Inquiries:

info@everestbiotech.com

Sales:

usasales@everestbiotech.com

Tech support:

support@everestbiotech.com

Tel: 888-320-4628 (toll-free)

Fax: 888-841-9041

www.everestbiotech.com

**Research Use Only. Not for
diagnostic or therapeutic use.**

EB06912 - Goat Anti-SCN5A Antibody

Size: 100µg specific antibody in 200µl



Target Protein

Principal Names: SCN5A, CDCD2, CMD1E, CMPD2, HB1, HB2, HBBD, ICCD, HH1, IVF, LQT3, SSS1, PFHB1, SSS1, sodium channel, voltage-gated, type V, alpha subunit, Nav1.5, sodium channel, voltage-gated, type V, alpha (long QT syndrome 3), cardiac sodium channel alpha subunit, sodium channel, voltage-gated, type V, alpha polypeptide (long (electrocardiographic) QT syndrome 3), VF1, cardiac tetrodotoxin-insensitive voltage-dependent sodium channel alpha subunit, sodium channel protein type V alpha subunit, voltage-gated sodium channel type V alpha

Official Symbol: SCN5A

Accession Number(s): NP_932173.1; NP_000326.2; NP_001092874.1; NP_001092875.1; NP_001153632.1; NP_001153633.1

Human GenelD(s): [6331](#)

Important Comments: This antibody is expected to recognise all reported isoforms (NP_932173.1; NP_000326.2; NP_001092874.1; NP_001092875.1).

Immunogen

Peptide with sequence C-ETDDQSPEKIN, from the internal region of the protein sequence according to NP_932173.1; NP_000326.2; NP_001092874.1; NP_001092875.1; NP_001153632.1; NP_001153633.1.

Please note the [peptide](#) is available for sale.

Purification and Storage

Purified from goat serum by ammonium sulphate precipitation followed by antigen affinity chromatography using the immunizing peptide.

Supplied at 0.5 mg/ml in Tris saline, 0.02% sodium azide, pH7.3 with 0.5% bovine serum albumin.

Aliquot and store at -20°C. Minimize freezing and thawing.

Applications Tested

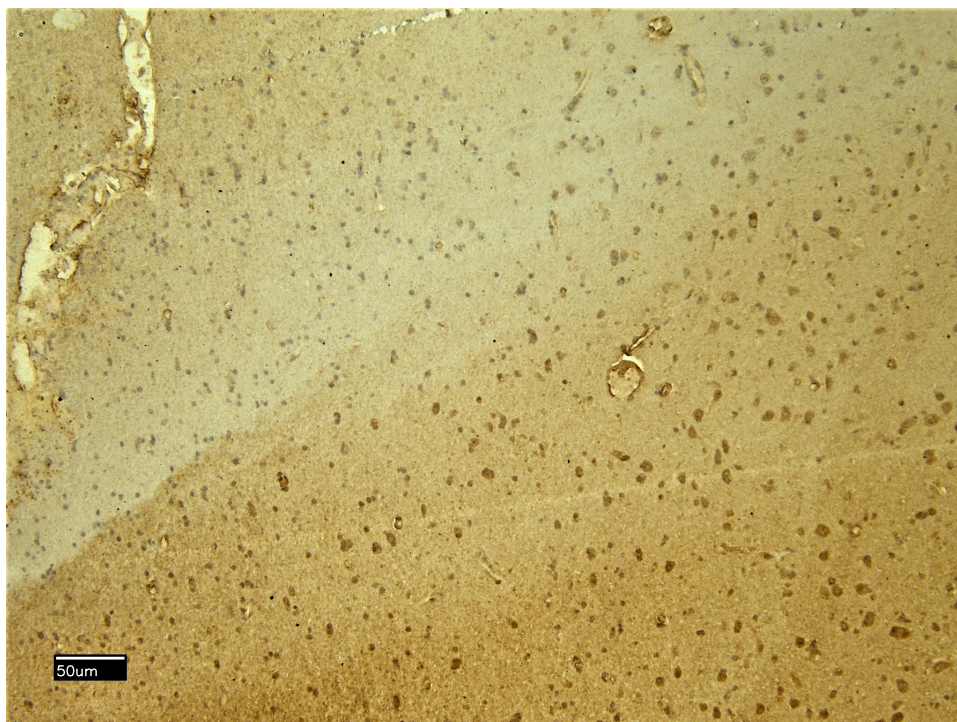
Peptide ELISA: antibody detection limit dilution 1:2000.

IHC: Paraffin embedded Human Brain (Cortex). Recommended concentration: 5-8µg/ml.

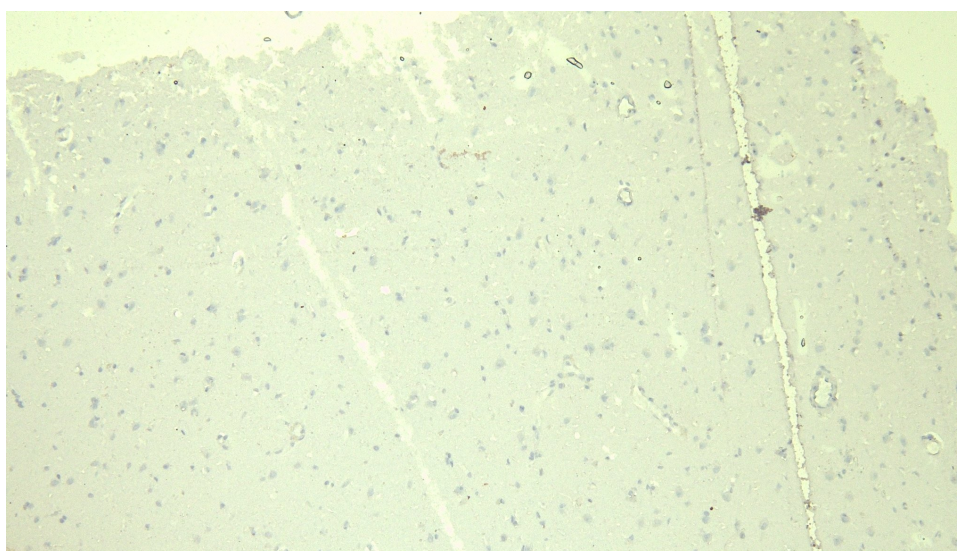
Species Reactivity

Tested: Human

Expected from sequence similarity: Human, Mouse, Rat, Dog, Cow



EB06912 (5µg/ml) staining of paraffin embedded Human Cortex. Heat induced antigen retrieval with citrate buffer pH 6, HRP-staining.



EB06912 Negative Control showing staining of paraffin embedded Human Cortex, with no primary antibody.