



UK Office

Everest Biotech Ltd

Cherwell Innovation Centre
77 Heyford Park
Upper Heyford
Oxfordshire
OX25 5HD
UK

Enquiries:

info@everestbiotech.com

Sales:

sales@everestbiotech.com

Tech support:

support@everestbiotech.com

Tel: +44 (0)1869 238326

Fax: +44 (0)1869 238327

US Office

Everest Biotech c/o Abcore

405 Maple Street, Suite A106
Ramona,
CA 92065
USA

Inquiries:

info@everestbiotech.com

Sales:

usasales@everestbiotech.com

Tech support:

support@everestbiotech.com

Tel: 888-320-4628 (toll-free)

Fax: 888-841-9041

www.everestbiotech.com

**Research Use Only. Not for
diagnostic or therapeutic use.**

EB10681 - Goat Anti-SCOC Antibody

Size: 100µg specific antibody in 200µl



Target Protein

Principal Names: SCOC, short coiled-coil protein, SCOCO, short coiled coil protein

Official Symbol: SCOC

Accession Number(s): NP_001146956.1; NP_001147135.1; NP_001147024.1;
NP_115936.2; NP_001147107.1; NP_001147162.1

Human GeneID(s): [60592](#)

Non-Human GeneID(s): 56367 (mouse), 364981 (rat)

Important Comments: This antibody is expected to recognize all six reported isoforms (NP_001146956.1; NP_001147135.1; NP_001147024.1; NP_115936.2; NP_001147107.1; NP_001147162.1). Reported variants represent identical protein: NP_001147057.1, NP_001146918.1, NP_115936.2

Immunogen

Peptide with sequence C-HTLEDLSARVDAVKE, from the internal region (near C Terminus) of the protein sequence according to NP_001146956.1; NP_001147135.1; NP_001147024.1; NP_115936.2; NP_001147107.1; NP_001147162.1.

Please note the [peptide](#) is available for sale.

Purification and Storage

Purified from goat serum by ammonium sulphate precipitation followed by antigen affinity chromatography using the immunizing peptide.

Supplied at 0.5 mg/ml in Tris saline, 0.02% sodium azide, pH7.3 with 0.5% bovine serum albumin.

Aliquot and store at -20°C. Minimize freezing and thawing.

Applications Tested

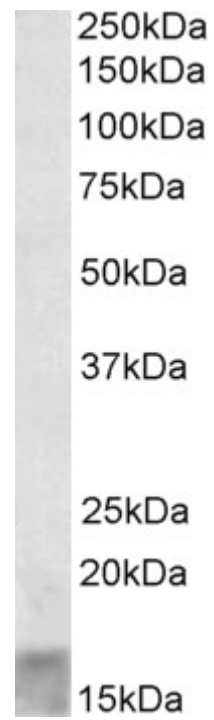
Peptide ELISA: antibody detection limit dilution 1:32000.

Western blot: Approx 16kDa band observed in Human Skeletal Muscle lysates (calculated MW of 18.0kDa according to NP_001146956.1). Recommended concentration: 0.1-0.3µg/ml.

Species Reactivity

Tested: Human

Expected from sequence similarity: Human, Mouse, Rat, Dog, Cow



EB10681 (0.1µg/ml) staining of Human Skeletal Muscle lysate (35µg protein in RIPA buffer). Primary incubation was 1 hour. Detected by chemiluminescence.