



UK Office

Everest Biotech Ltd

Cherwell Innovation Centre
77 Heyford Park
Upper Heyford
Oxfordshire
OX25 5HD
UK

Enquiries:

info@everestbiotech.com

Sales:

sales@everestbiotech.com

Tech support:

support@everestbiotech.com

Tel: +44 (0)1869 238326

www.everestbiotech.com

**Research Use Only. Not for
diagnostic or therapeutic use.**

EB11471 - Goat Anti-SDCCAG8 Antibody

Size: 100µg specific antibody in 200µl



Target Protein

Principal Names: antigen NY-CO-8, BBS16, CCCAP, centrosomal colon cancer autoantigen protein, hCCCAP, NPHP10, NY-CO-8, OTTHUMP00000037913, SDCCAG8, serologically defined colon cancer antigen 8, SLSN7

Official Symbol: SDCCAG8

Accession Number(s): NP_006633.1

Human GeneID(s): [10806](#)

Non-Human GeneID(s): 76816 (mouse), 305002 (rat)

Immunogen

Peptide with sequence C-TINDQSQYIHHLEAE, from the internal region of the protein sequence according to NP_006633.1.

Please note the [peptide](#) is available for sale.

Purification and Storage

Purified from goat serum by ammonium sulphate precipitation followed by antigen affinity chromatography using the immunizing peptide.

Supplied at 0.5 mg/ml in Tris saline, 0.02% sodium azide, pH7.3 with 0.5% bovine serum albumin.

Aliquot and store at -20°C. Minimize freezing and thawing.

Applications Tested

Peptide ELISA: antibody detection limit dilution 1:128000.

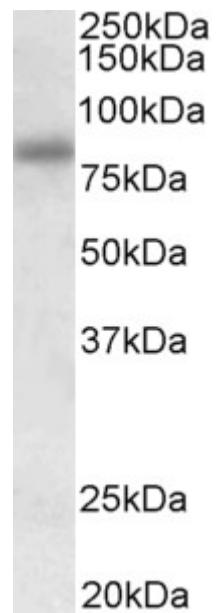
Western blot: Approx 80kDa band observed in lysates of cell line HEK293 (calculated MW of 82.7kDa according to NP_006633.1). Recommended concentration: 0.3-1µg/ml. Primary incubation was 1 hour.

IHC: Paraffin embedded Human Brain (Cortex). Recommended concentration: 5µg/ml.

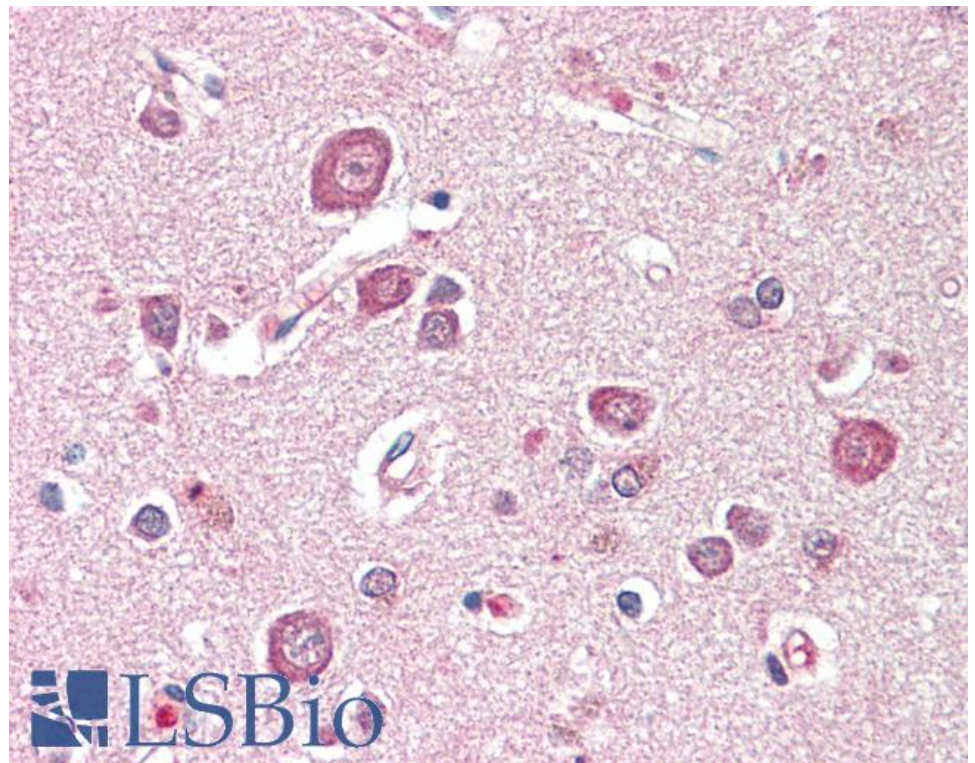
Species Reactivity

Tested: Human

Expected from sequence similarity: Human, Mouse, Rat, Dog, Pig



EB11471 (0.3 μ g/ml) staining of HEK293 lysate (35 μ g protein in RIPA buffer). Detected by chemiluminescence.



EB11471 (5 μ g/ml) staining of paraffin embedded Human Cortex. Steamed antigen retrieval with citrate buffer pH 6, AP-staining.