



UK Office

Everest Biotech Ltd

Cherwell Innovation Centre
77 Heyford Park
Upper Heyford
Oxfordshire
OX25 5HD
UK

Enquiries:

info@everestbiotech.com

Sales:

sales@everestbiotech.com

Tech support:

support@everestbiotech.com

Tel: +44 (0)1869 238326

Fax: +44 (0)1869 238327

US Office

Everest Biotech c/o Abcore

405 Maple Street, Suite A106
Ramona,
CA 92065
USA

Inquiries:

info@everestbiotech.com

Sales:

usasales@everestbiotech.com

Tech support:

support@everestbiotech.com

Tel: 888-320-4628 (toll-free)

Fax: 888-841-9041

www.everestbiotech.com

**Research Use Only. Not for
diagnostic or therapeutic use.**

EB10744 - Goat Anti-SDF4 (aa161-175) Antibody

Size: 100µg specific antibody in 200µl



Target Protein

Principal Names: SDF4, stromal cell derived factor 4, Cab45, 45 kDa calcium-binding protein, OTTHUMP00000001754, SDF-4, calcium binding protein, stromal cell-derived factor 4

Official Symbol: SDF4

Accession Number(s): NP_057631.2; NP_057260.3

Human GeneID(s): [51150](#)

Non-Human GeneID(s): 20318 (mouse), 155173 (rat)

Important Comments: This antibody is expected to recognize both reported isoforms NP_057631.2; and NP_057260.3

Immunogen

Peptide with sequence C-EYKVKFLASKGHSEK, from the internal region of the protein sequence according to NP_057631.2; NP_057260.3.

Please note the [peptide](#) is available for sale.

Purification and Storage

Purified from goat serum by ammonium sulphate precipitation followed by antigen affinity chromatography using the immunizing peptide.

Supplied at 0.5 mg/ml in Tris saline, 0.02% sodium azide, pH7.3 with 0.5% bovine serum albumin.

Aliquot and store at -20°C. Minimize freezing and thawing.

Applications Tested

Peptide ELISA: antibody detection limit dilution 1:64000.

Western blot: Approx 45kDa band observed in lysates of cell lines Jurkat, HeLa and U251 (calculated MW of 41.8kDa according to NP_057260.2). Recommended concentration: 0.1-0.3µg/ml. Primary incubation 1 hour at room temperature.

IHC: In paraffin embedded Human Kidney shows preferential staining in the brush borders of epithelial cells. Recommended concentration: 5-10µg/ml.

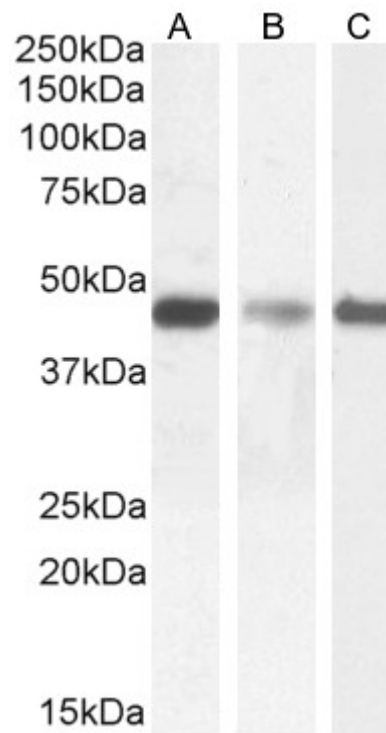
Immunofluorescence: Strong expression of the protein seen in the golgi and cytoplasm of U2OS cells. Recommended concentration: 10µg/ml.

Flow Cytometry: Flow cytometric analysis of A431 cells. Recommended concentration: 10ug/ml.

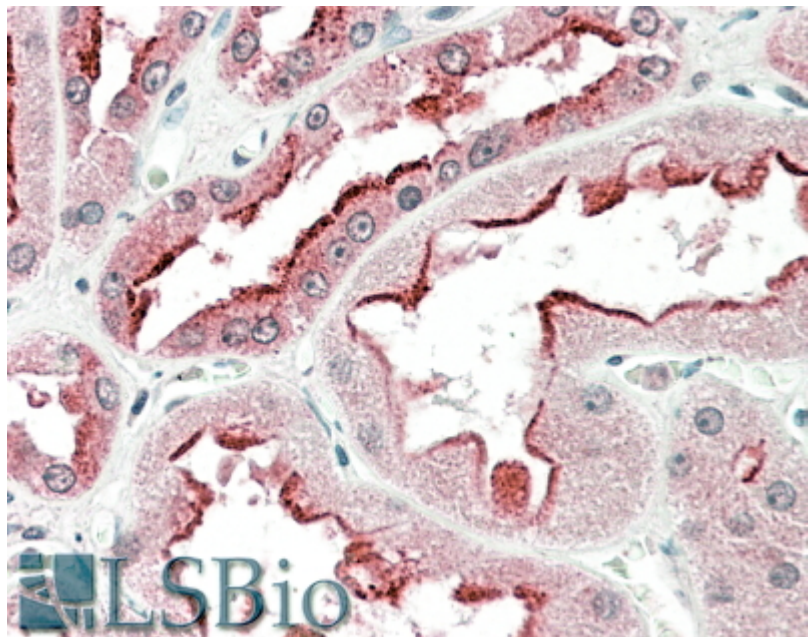
Species Reactivity

Tested: Human

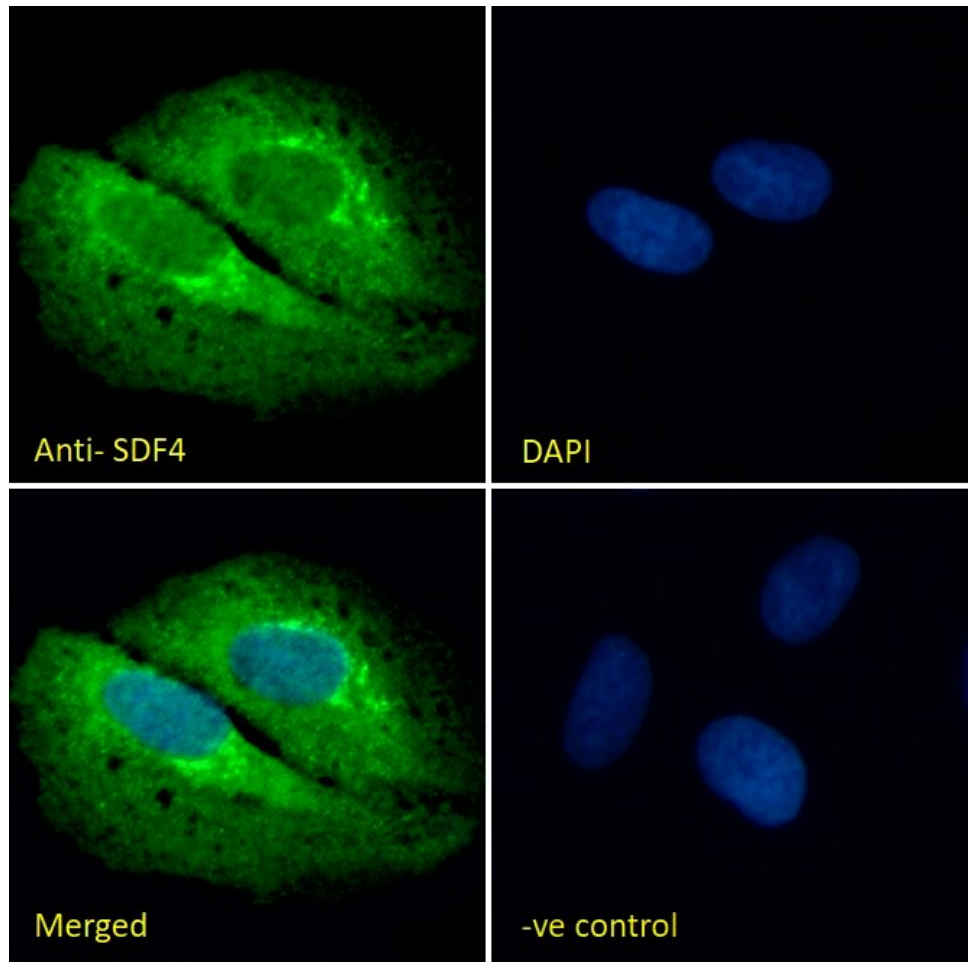
Expected from sequence similarity: Human, Mouse, Rat, Dog, Cow



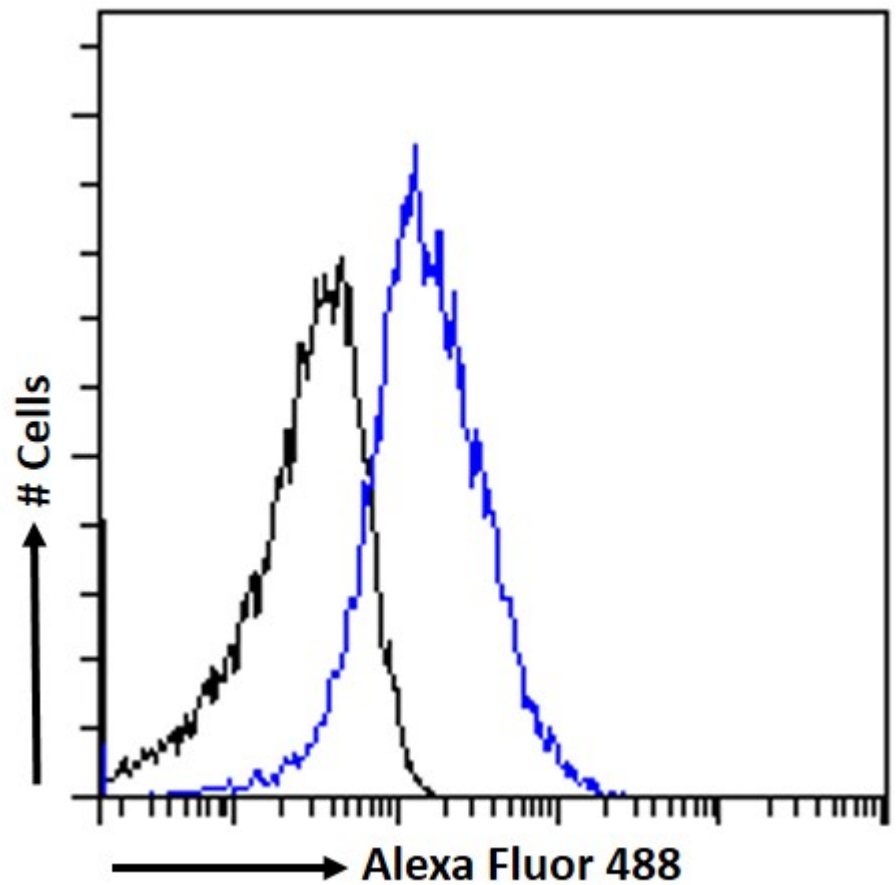
EB10744 (0.1µg/ml) staining of Jurkat (A), HeLa (B) and U251 (C) cell lysate (35µg protein in RIPA buffer).
Detected by chemiluminescence.



EB10744 (5µg/ml) staining of paraffin embedded Human Kidney. Steamed antigen retrieval with citrate buffer pH 6, AP-staining.



EB10744 Immunofluorescence analysis of paraformaldehyde fixed U2OS cells, permeabilized with 0.15% Triton. Primary incubation 1hr (10ug/ml) followed by Alexa Fluor 488 secondary antibody (2ug/ml), showing Golgi and cytoplasmic staining. The nuclear stain is DAPI (blue). Negative control: Unimmunized goat IgG (10ug/ml) followed by Alexa Fluor 488 secondary antibody (2ug/ml).



EB10744 Flow cytometric analysis of paraformaldehyde fixed A431 cells (blue line), permeabilized with 0.5% Triton. Primary incubation 1hr (10ug/ml) followed by Alexa Fluor 488 secondary antibody (1ug/ml). IgG control: Unimmunized goat IgG (black line) followed by Alexa Fluor 488 secondary antibody.