



## UK Office

### Everest Biotech Ltd

Cherwell Innovation Centre  
77 Heyford Park  
Upper Heyford  
Oxfordshire  
OX25 5HD  
UK

Enquiries:

[info@everestbiotech.com](mailto:info@everestbiotech.com)

Sales:

[sales@everestbiotech.com](mailto:sales@everestbiotech.com)

Tech support:

[support@everestbiotech.com](mailto:support@everestbiotech.com)

Tel: +44 (0)1869 238326

Fax: +44 (0)1869 238327

## US Office

### Everest Biotech c/o Abcore

405 Maple Street, Suite A106  
Ramona,  
CA 92065  
USA

Inquiries:

[info@everestbiotech.com](mailto:info@everestbiotech.com)

Sales:

[usasales@everestbiotech.com](mailto:usasales@everestbiotech.com)

Tech support:

[support@everestbiotech.com](mailto:support@everestbiotech.com)

Tel: 888-320-4628 (toll-free)

Fax: 888-841-9041

[www.everestbiotech.com](http://www.everestbiotech.com)

**Research Use Only. Not for  
diagnostic or therapeutic use.**

## EB10744-B - Goat Anti-SDF4 (aa161-175), Biotinylated Antibody

Size: 100µg specific antibody in 200µl



### Target Protein

**Principal Names:** SDF4, stromal cell derived factor 4, Cab45, 45 kDa calcium-binding protein, OTTHUMP00000001754, SDF-4, calcium binding protein, stromal cell-derived factor 4

**Official Symbol:** SDF4

**Accession Number(s):** NP\_057631.1; NP\_057260.2

**Human GeneID(s):** [51150](#)

**Non-Human GeneID(s):** 20318 (mouse), 155173 (rat)

**Important Comments:** This antibody is expected to recognize both reported isoforms (NP\_057631.1; NP\_057260.2).

### Immunogen

Peptide with sequence C-EYKVKFLASKGHSEK., from the internal region of the protein sequence according to NP\_057631.1; NP\_057260.2.

Please note the [peptide](#) is available for sale.

### Purification and Storage

Purified from goat serum by ammonium sulphate precipitation followed by antigen affinity chromatography using the immunizing peptide.

Supplied at 0.5 mg/ml in Tris saline, 0.02% sodium azide, pH7.3 with 0.5% bovine serum albumin.

Aliquot and store at -20°C. Minimize freezing and thawing.

### Applications Tested

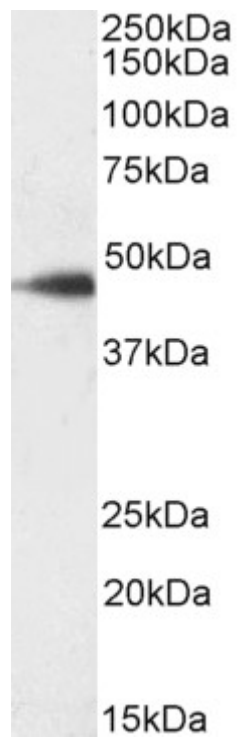
**Peptide ELISA:** antibody detection limit dilution 1:64000.

**Western blot:** Approx 45kDa band observed in lysates of cell line Jurkat (calculated MW of 41.8kDa according to NP\_057260.2). Recommended concentration: 0.1-0.3µg/ml.

### Species Reactivity

**Tested:** Human

**Expected from sequence similarity:** Human, Mouse, Rat, Dog, Cow



Biotinylated EB10744 (0.1  $\mu\text{g/ml}$ ) staining of Jurkat lysate (35  $\mu\text{g}$  protein in RIPA buffer). Primary incubation was 1 hour. Detected by chemiluminescence, using streptavidin-HRP and using NAP blocker as a substitute for skimmed milk.