



Everest Biotech Ltd  
Cherwell Innovation Centre  
77 Heyford Park  
Upper Heyford  
Oxfordshire  
OX25 5HD, United Kingdom

[everestbiotech.com](http://everestbiotech.com)

[sales@everestbiotech.com](mailto:sales@everestbiotech.com)

[support@everestbiotech.com](mailto:support@everestbiotech.com)

Tel +44 1869 238326

Fax +44 1869 238327

**Research Use Only. Not for diagnostic or therapeutic use.**

Storage: For long-term storage keep aliquots at -20°C. (Store no longer than 12 months at 4°C). Minimize freezing and thawing.

## EB05001 - Goat Anti-SEC61A1 Antibody

Size: 100µg specific antibody in 200µl



### Target Protein

**Principal Names:** Sec61 alpha-1, Sec61 alpha 1 subunit, Sec61 alpha 1 subunit (S. cerevisiae), sec61 homolog, protein transport protein SEC61 alpha subunit isoform 1, SEC61A, SEC61, HSEC61, SEC61A1

**Official Symbol:** SEC61A1

**Accession Number(s):** NP\_037468.1

**Human GeneID(s):** [29927](#)

### Immunogen

Peptide with sequence C-KEQSEVGS MGALLF, from the C Terminus of the protein sequence according to NP\_037468.1.

Please note the [peptide](#) is available for sale.

### Purification and Storage

Purified from goat serum by ammonium sulphate precipitation followed by antigen affinity chromatography using the immunizing peptide.

Supplied at 0.5 mg/ml in Tris saline, 0.02% sodium azide, pH7.3 with 0.5% bovine serum albumin.

Aliquot and store at -20°C. Minimize freezing and thawing.

### Applications Tested

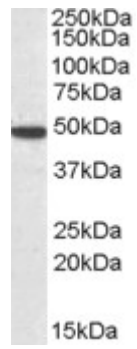
**Peptide ELISA:** antibody detection limit dilution 1:8000.

**Western blot:** Approx 50kDa band observed in Human Brain (Cerebellum) and Mouse Brain lysates (calculated MW of 52.3kDa according to NP\_037468.1). Recommended concentration: 1-3µg/ml.

### Species Reactivity

**Tested:** Human, Mouse

**Expected from sequence similarity:** Human, Dog, Cow, Pig



EB05001 (1µg/ml) staining of Human Cerebellum lysate (35µg protein in RIPA buffer). Primary incubation was 1 hour. Detected by chemiluminescence.