



Everest Biotech Ltd
Cherwell Innovation Centre
77 Heyford Park
Upper Heyford
Oxfordshire
OX25 5HD, United Kingdom

everestbiotech.com

sales@everestbiotech.com

support@everestbiotech.com

Tel +44 1869 238326

Fax +44 1869 238327

Research Use Only. Not for diagnostic or therapeutic use.

Storage: For long-term storage keep aliquots at -20°C. (Store no longer than 12 months at 4°C). Minimize freezing and thawing.

EB06661 - Goat Anti-SEMA3E Antibody

Size: 100µg specific antibody in 200µl



Target Protein

Principal Names: sema domain, immunoglobulin domain (Ig), short basic domain, secreted, 3E, sema domain, immunoglobulin domain (Ig), short basic domain, secreted, (semaphorin) 3E, M-sema H, KIAA0331, M-SemaK, M-SEMAH, coll-5, SEMAH, SEMA3E

Official Symbol: SEMA3E

Accession Number(s): NP_036563.1

Human GeneID(s): [9723](#)

Immunogen

Peptide with sequence C-KPEHYRLPRHTLDS, from the C Terminus of the protein sequence according to NP_036563.1.

Please note the [peptide](#) is available for sale.

Purification and Storage

Purified from goat serum by ammonium sulphate precipitation followed by antigen affinity chromatography using the immunizing peptide.

Supplied at 0.5 mg/ml in Tris saline, 0.02% sodium azide, pH7.3 with 0.5% bovine serum albumin.

Aliquot and store at -20°C. Minimize freezing and thawing.

Applications Tested

Peptide ELISA: antibody detection limit dilution 1:64000.

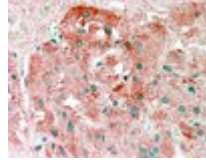
Western blot: Preliminary experiments gave bands at approx 35kDa and 20kDa in Human Prostate lysates after 0.1µg/ml antibody staining. Please note that currently we cannot find an explanation in the literature for the bands we observe given the calculated size of 89.2kDa according to NP_036563.1. Both detected bands were successfully blocked by incubation with the immunizing peptide (and BLAST results with the immunizing peptide sequence did not identify any other proteins to explain the additional bands). We would appreciate any feedback from people in the field - have any results been reported with other antibodies/lysates? Have any further splice variants/modified forms been reported?

IHC: In paraffin embedded Human Adrenal Medulla shows granular cytoplasmic staining increasing towards the zona reticularis. Recommended concentration, 2-4µg/ml.

Species Reactivity

Tested: Human

Expected from sequence similarity: Human



EB06661 (2.5µg/ml) staining of paraffin embedded Human Adrenal Gland. Steamed antigen retrieval with citrate buffer pH 6, AP-staining.