



UK Office

Everest Biotech Ltd

Cherwell Innovation Centre
77 Heyford Park
Upper Heyford
Oxfordshire
OX25 5HD
UK

Enquiries:

info@everestbiotech.com

Sales:

sales@everestbiotech.com

Tech support:

support@everestbiotech.com

Tel: +44 (0)1869 238326

Fax: +44 (0)1869 238327

US Office

Everest Biotech c/o Abcore

405 Maple Street, Suite A106
Ramona,
CA 92065
USA

Inquiries:

info@everestbiotech.com

Sales:

usasales@everestbiotech.com

Tech support:

support@everestbiotech.com

Tel: 888-320-4628 (toll-free)

Fax: 888-841-9041

www.everestbiotech.com

**Research Use Only. Not for
diagnostic or therapeutic use.**

EB07541 - Goat Anti-Semaphorin 3E (internal) Antibody

Size: 100µg specific antibody in 200µl



Target Protein

Principal Names: SEMA3E, sema domain, immunoglobulin domain (Ig), short basic domain, secreted, (semaphorin) 3E, KIAA0331, M-SEMAH, M-SemaK, M-sema H, SEMAH, coll-5, sema domain, immunoglobulin domain (Ig), short basic domain, secreted, 3E, semaphorin 3E

Official Symbol: SEMA3E

Accession Number(s): NP_036563.1; NP_001171600.1

Human GeneID(s): [9723](#)

Non-Human GeneID(s): 20349 (mouse)

Important Comments: This antibody is expected to recognise both reported isoforms (NP_036563.1; NP_001171600.1).

Immunogen

Peptide with sequence C-NGGRYGTTKDYPDD, from the internal region of the protein sequence according to NP_036563.1; NP_001171600.1.

Please note the [peptide](#) is available for sale.

Purification and Storage

Purified from goat serum by ammonium sulphate precipitation followed by antigen affinity chromatography using the immunizing peptide.

Supplied at 0.5 mg/ml in Tris saline, 0.02% sodium azide, pH7.3 with 0.5% bovine serum albumin.

Aliquot and store at -20°C. Minimize freezing and thawing.

Applications Tested

Peptide ELISA: antibody detection limit dilution 1:128000.

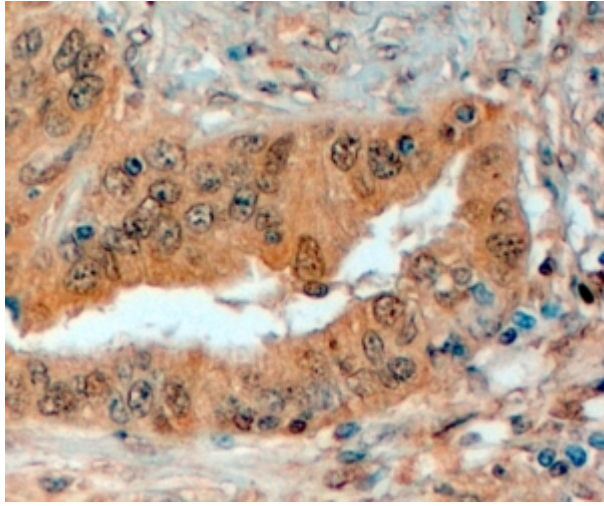
Western blot: Preliminary experiments gave an approx 35kDa band in Human Prostate lysates after 0.03µg/ml antibody staining. Please note that currently we cannot find an explanation in the literature for the band we observe given the calculated size of 89.2kDa according to NP_036563.1. The 35kDa band was successfully blocked by incubation with the immunizing peptide.

IHC: In paraffin embedded Human Prostate shows membranous staining of secretory cells in the gland. Recommended concentration, 4-6µg/ml.

Species Reactivity

Tested: Human

Expected from sequence similarity: Human, Mouse, Rat, Dog, Pig



EB07541 (4µg/ml) staining of paraffin embedded Human Prostate. Steamed antigen retrieval with citrate buffer pH 6, HRP-staining.