

## UK Office

### Everest Biotech Ltd

Cherwell Innovation Centre  
77 Heyford Park  
Upper Heyford  
Oxfordshire  
OX25 5HD  
UK

Enquiries:

[info@everestbiotech.com](mailto:info@everestbiotech.com)

Sales:

[sales@everestbiotech.com](mailto:sales@everestbiotech.com)

Tech support:

[support@everestbiotech.com](mailto:support@everestbiotech.com)

Tel: +44 (0)1869 238326

[www.everestbiotech.com](http://www.everestbiotech.com)

**Research Use Only. Not for  
diagnostic or therapeutic use.**

## EB07352 - Goat Anti-Semaphorin 5A Antibody

Size: 100µg specific antibody in 200µl



### Target Protein

**Principal Names:** SEMA5A, sema domain, seven thrombospondin repeats (type 1 and type 1-like), transmembrane domain (TM) and short cytoplasmic domain, (semaphorin) 5A, HGNC:10736, SEMAF, semF, sema domain, seven thrombospondin repeats (type 1 and type 1-like), transmembrane

**Official Symbol:** SEMA5A

**Accession Number(s):** NP\_003957.1

**Human GeneID(s):** [9037](#)

**Non-Human GeneID(s):** 20356 (mouse), 310207 (rat)

**Important Comments:** The immunizing peptide corresponds to a part of the extracellular domain.

### Immunogen

Peptide with sequence DEATKKACYSKGKS, from the internal region of the protein sequence according to NP\_003957.1.

Please note the [peptide](#) is available for sale.

### Purification and Storage

Purified from goat serum by ammonium sulphate precipitation followed by antigen affinity chromatography using the immunizing peptide.

Supplied at 0.5 mg/ml in Tris saline, 0.02% sodium azide, pH7.3 with 0.5% bovine serum albumin.

Aliquot and store at -20°C. Minimize freezing and thawing.

### Applications Tested

**Peptide ELISA:** antibody detection limit dilution 1:128000.

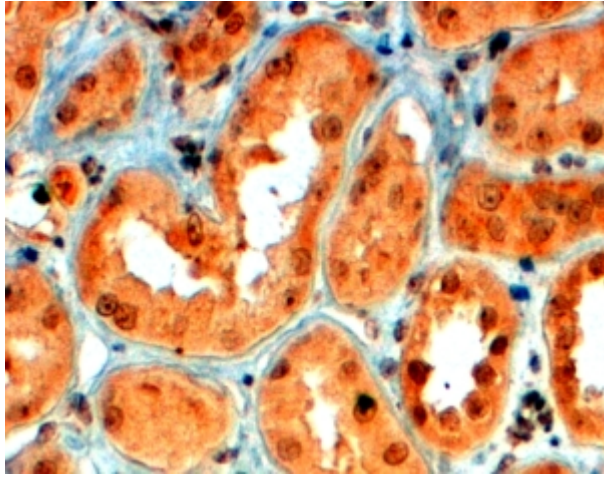
**Western blot:** Preliminary experiments gave an approx 90kDa in Mouse Brain lysates and approx 25kDa band in Human Brain (Cerebellum), Colon, Heart and Kidney lysates after 0.03µg/ml antibody staining. Please note that currently we cannot find an explanation in the literature for the bands we observe given the calculated size of 121kDa according to NP\_003957.1. The 90kDa and 25kDa band were successfully blocked by incubation with the immunizing peptide.

**IHC:** In paraffin embedded Human Kidney shows membranous and vesicular staining in PCT cells. Recommended concentration: 4-6µg/ml.

### Species Reactivity

**Tested:** Human

**Expected from sequence similarity:** Human, Mouse, Rat, Dog, Cow



EB07352 (4 $\mu$ g/ml) staining of paraffin embedded Human Kidney. Steamed antigen retrieval with citrate buffer pH 6, HRP-staining.