



UK Office

Everest Biotech Ltd

Cherwell Innovation Centre
77 Heyford Park
Upper Heyford
Oxfordshire
OX25 5HD
UK

Enquiries:

info@everestbiotech.com

Sales:

sales@everestbiotech.com

Tech support:

support@everestbiotech.com

Tel: +44 (0)1869 238326

Fax: +44 (0)1869 238327

US Office

Everest Biotech c/o Abcore

405 Maple Street, Suite A106
Ramona,
CA 92065
USA

Inquiries:

info@everestbiotech.com

Sales:

usasales@everestbiotech.com

Tech support:

support@everestbiotech.com

Tel: 888-320-4628 (toll-free)

Fax: 888-841-9041

www.everestbiotech.com

**Research Use Only. Not for
diagnostic or therapeutic use.**

EB08931 - Goat Anti-SEPT2 Antibody

Size: 100µg specific antibody in 200µl



Target Protein

Principal Names: SEPT2, septin 2, DIFF6, KIAA0158, NEDD5, Pnutl3, hNedd5, neural precursor cell expressed, developmentally down-regulated 5

Official Symbol: SEPTIN2

Accession Number(s): NP_001008491.1

Human GeneID(s): [4735](#)

Non-Human GeneID(s): 18000 (mouse), 117515 (rat)

Important Comments: Reported variants represent identical protein: NP_001008492.1, NP_006146.1, NP_004395.1, NP_001008491.1.

Immunogen

Peptide with sequence SKQQPTQFINPET-C, from the N terminus of the protein sequence according to NP_001008491.1.

Please note the [peptide](#) is available for sale.

Purification and Storage

Purified from goat serum by ammonium sulphate precipitation followed by antigen affinity chromatography using the immunizing peptide.

Supplied at 0.5 mg/ml in Tris saline, 0.02% sodium azide, pH7.3 with 0.5% bovine serum albumin.

Aliquot and store at -20°C. Minimize freezing and thawing.

Applications Tested

Peptide ELISA: antibody detection limit dilution 1:32000.

Western blot: Approx. 40kDa band observed in Human Testis lysates (calculated MW of 41.5kDa according to NP_001008491.1). Recommended concentration: 0.05-0.2µg/ml.

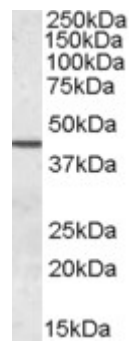
Primary incubation was 1 hour.

IHC: Paraffin embedded Human Breast, Tonsil and Brain (Cortex). Recommended concentration: 2.5µg/ml.

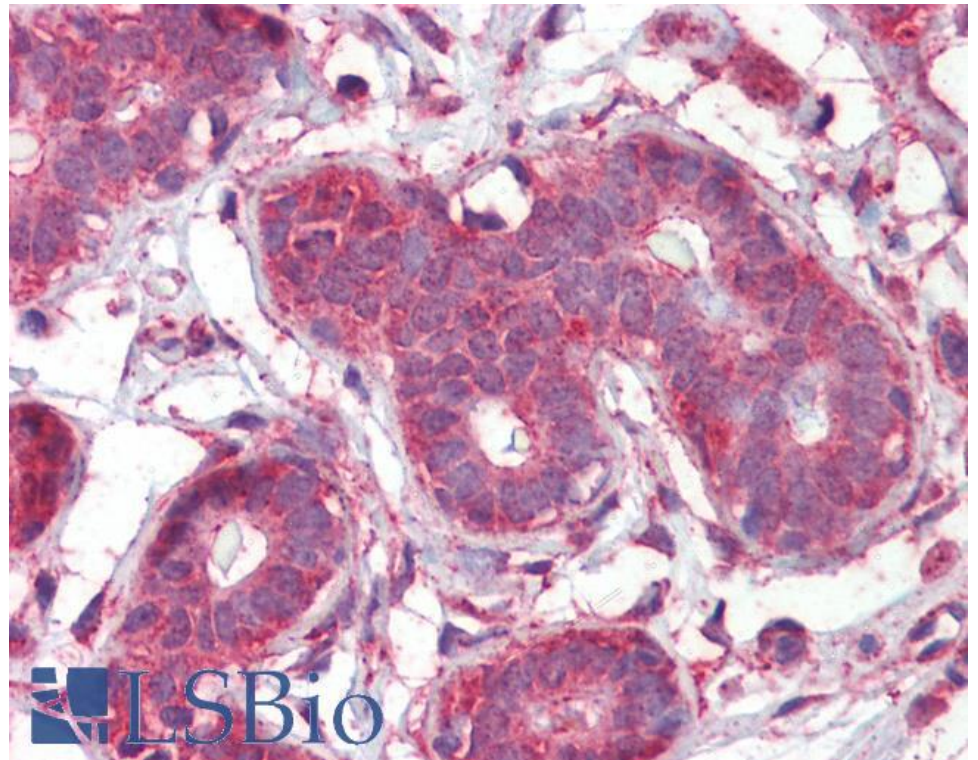
Species Reactivity

Tested: Human

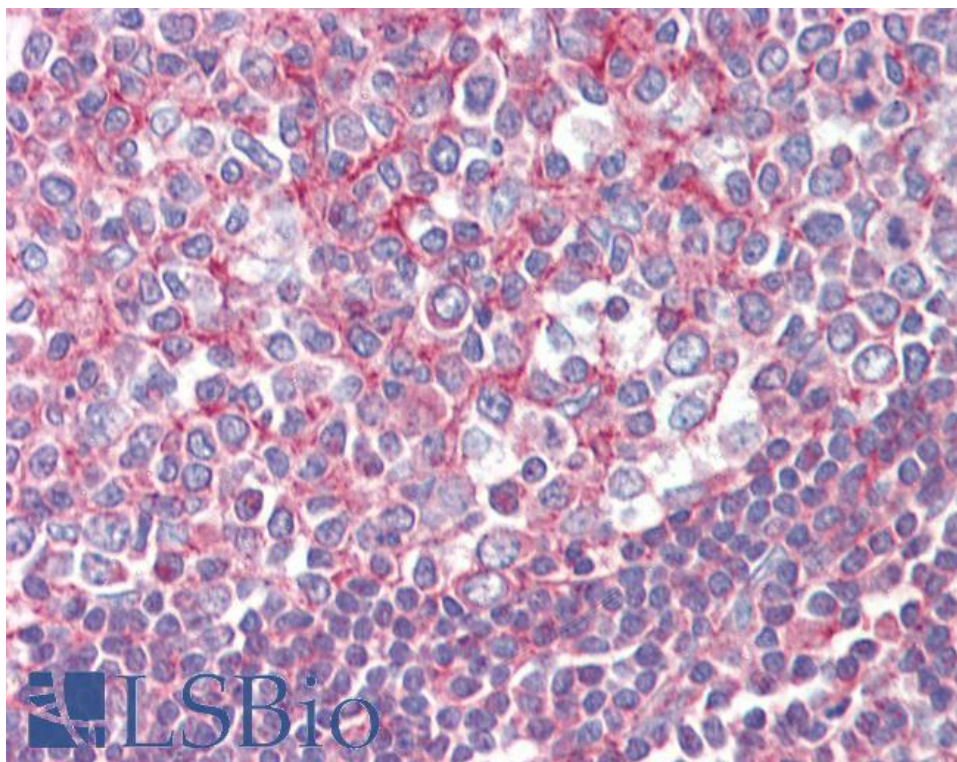
Expected from sequence similarity: Human, Mouse, Rat, Cow



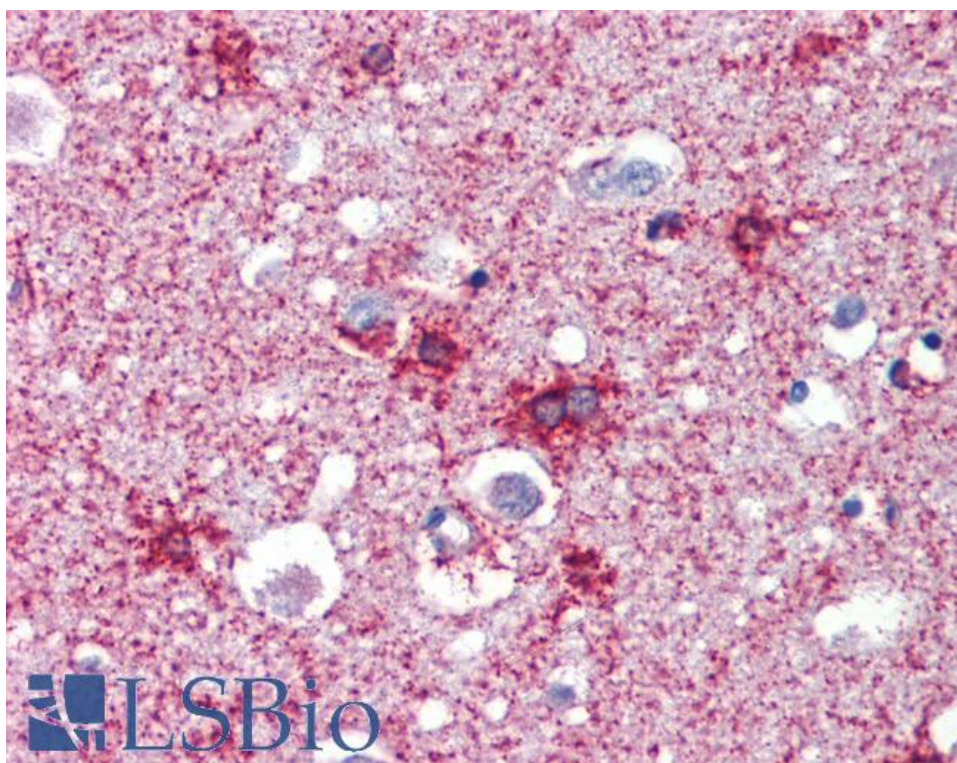
EB08931 (0.05 μ g/ml) staining of Human Testis lysate (35 μ g protein in RIPA buffer). Detected by chemiluminescence.



EB08931 (2.5 μ g/ml) staining of paraffin embedded Human Breast. Steamed antigen retrieval with citrate buffer pH 6, AP-staining.



EB08931 (2.5µg/ml) staining of paraffin embedded Human Tonsil. Steamed antigen retrieval with citrate buffer pH 6, AP-staining.



EB08931 (2.5µg/ml) staining of paraffin embedded Human Cortex. Steamed antigen retrieval with citrate buffer pH 6, AP-staining.