



UK Office

Everest Biotech Ltd

Cherwell Innovation Centre
77 Heyford Park
Upper Heyford
Oxfordshire
OX25 5HD
UK

Enquiries:

info@everestbiotech.com

Sales:

sales@everestbiotech.com

Tech support:

support@everestbiotech.com

Tel: +44 (0)1869 238326

www.everestbiotech.com

**Research Use Only. Not for
diagnostic or therapeutic use.**

EB10427 - Goat Anti-SEPT4 (aa425-435) Antibody

Size: 100µg specific antibody in 200µl



Target Protein

Principal Names: ARTS, BRADEION, CE5B3, cell division control-related protein 2, cerebral protein 7, H5, hCDCREL-2, hucep-7, MART, peanut-like 2, PNUTL2, SEP4, septin 4

Official Symbol: SEPT4

Accession Number(s): NP_004565.1; NP_536341.1, NP_001185642.1

Human GeneID(s): [5414](#)

Non-Human GeneID(s): 18952 (mouse)

Important Comments: This antibody is expected to recognize isoform 1 (NP_004565.1), 3 (NP_536341.1) and 4 (NP_001185642.1). Amino acid numbering in name refers to NP_004565.1 sequence.

Immunogen

Peptide with sequence C-RNKLTRRESGTD, from the internal region of the protein sequence according to NP_004565.1; NP_536341.1, NP_001185642.1.

Please note the [peptide](#) is available for sale.

Purification and Storage

Purified from goat serum by ammonium sulphate precipitation followed by antigen affinity chromatography using the immunizing peptide.

Supplied at 0.5 mg/ml in Tris saline, 0.02% sodium azide, pH7.3 with 0.5% bovine serum albumin.

Aliquot and store at -20°C. Minimize freezing and thawing.

Applications Tested

Peptide ELISA: antibody detection limit dilution 1:64000.

Western blot: Approx 50kDa band observed in Human Heart lysates and in preliminary testing of Mouse Brain lysate (calculated MW of 53.0kDa according to NP_536341.1).

Recommended concentration: 1-3µg/ml. Primary incubation 1 hour at room temperature.

IHC: Paraffin embedded Human Brain (Cerebellum). Recommended concentration: 3.75µg/ml.

Flow Cytometry: Flow cytometric analysis of Jurkat cells. Recommended concentration: 10ug/ml.

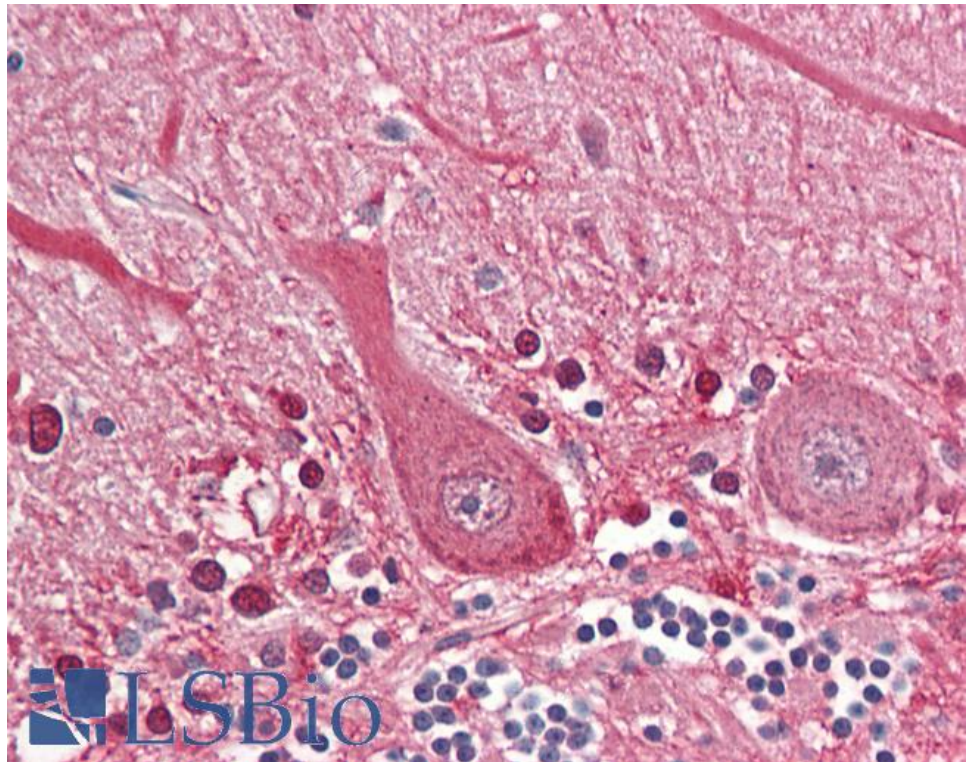
Species Reactivity

Tested: Human

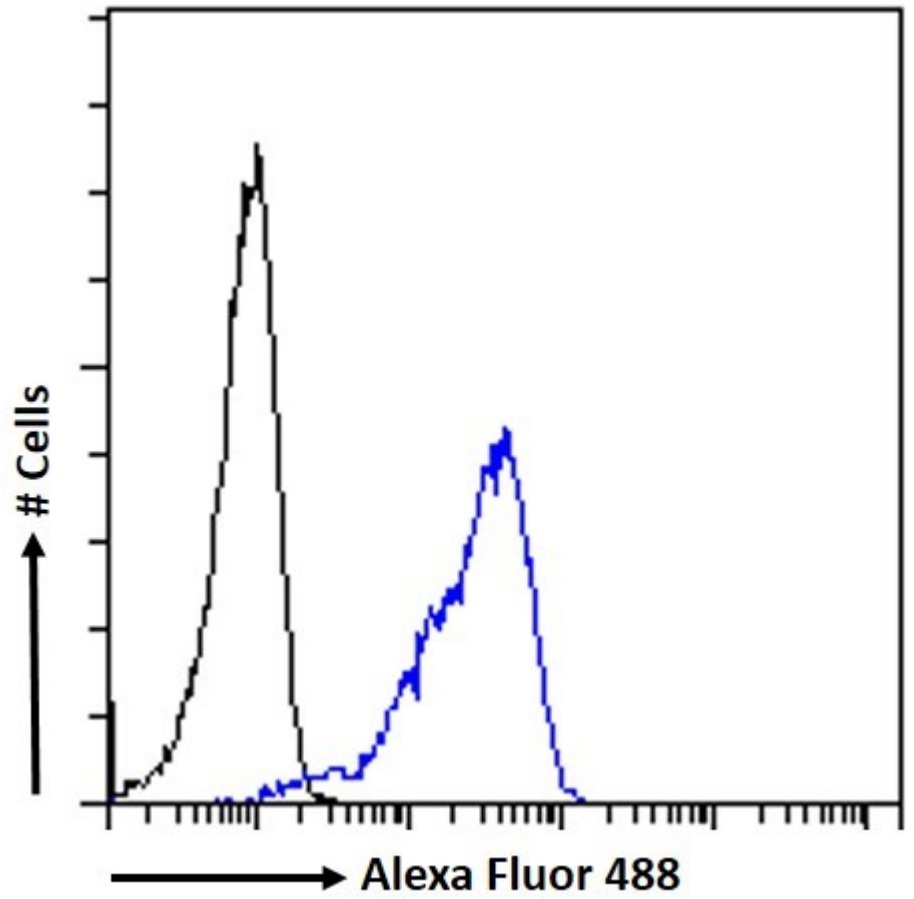
Expected from sequence similarity: Human



EB10427 (1 μ g/ml) staining of Human Heart lysate (35 μ g protein in RIPA buffer). Detected by chemiluminescence.



EB10427 (3.75 μ g/ml) staining of paraffin embedded Human Cerebellum. Steamed antigen retrieval with citrate buffer pH 6, AP-staining.



EB10427 Flow cytometric analysis of paraformaldehyde fixed Jurkat cells (blue line), permeabilized with 0.5% Triton. Primary incubation 1hr (10ug/ml) followed by Alexa Fluor 488 secondary antibody (1ug/ml). IgG control: Unimmunized goat IgG (black line) followed by Alexa Fluor 488 secondary antibody.