



## UK Office

### Everest Biotech Ltd

Cherwell Innovation Centre  
77 Heyford Park  
Upper Heyford  
Oxfordshire  
OX25 5HD  
UK

Enquiries:

[info@everestbiotech.com](mailto:info@everestbiotech.com)

Sales:

[sales@everestbiotech.com](mailto:sales@everestbiotech.com)

Tech support:

[support@everestbiotech.com](mailto:support@everestbiotech.com)

Tel: +44 (0)1869 238326

Fax: +44 (0)1869 238327

## US Office

### Everest Biotech c/o Abcore

405 Maple Street, Suite A106  
Ramona,  
CA 92065  
USA

Inquiries:

[info@everestbiotech.com](mailto:info@everestbiotech.com)

Sales:

[usasales@everestbiotech.com](mailto:usasales@everestbiotech.com)

Tech support:

[support@everestbiotech.com](mailto:support@everestbiotech.com)

Tel: 888-320-4628 (toll-free)

Fax: 888-841-9041

[www.everestbiotech.com](http://www.everestbiotech.com)

**Research Use Only. Not for  
diagnostic or therapeutic use.**

## EB08932 - Goat Anti-SEPT6 Antibody

Size: 100µg specific antibody in 200µl



### Target Protein

**Principal Names:** SEPT6, septin 6, KIAA0128, MGC16619, MGC20339, SEP2, SEPT2, septin 2

**Official Symbol:** SEPTIN6

**Accession Number(s):** NP\_665798.1; NP\_055944.2; NP\_665801.1

**Human GeneID(s):** [23157](#)

**Important Comments:** This antibody is expected to recognize the reported isoforms NP\_665798.1, NP\_055944.2 and NP\_665801.1. Reported variants NP\_665799.1 and NP\_665798.1 represent identical protein.

### Immunogen

Peptide with sequence C-DEVNAFKQRKTA, from the internal region of the protein sequence according to NP\_665798.1; NP\_055944.2; NP\_665801.1.

Please note the [peptide](#) is available for sale.

### Purification and Storage

Purified from goat serum by ammonium sulphate precipitation followed by antigen affinity chromatography using the immunizing peptide.

Supplied at 0.5 mg/ml in Tris saline, 0.02% sodium azide, pH7.3 with 0.5% bovine serum albumin.

Aliquot and store at -20°C. Minimize freezing and thawing.

### Applications Tested

**Peptide ELISA:** antibody detection limit dilution 1:4000.

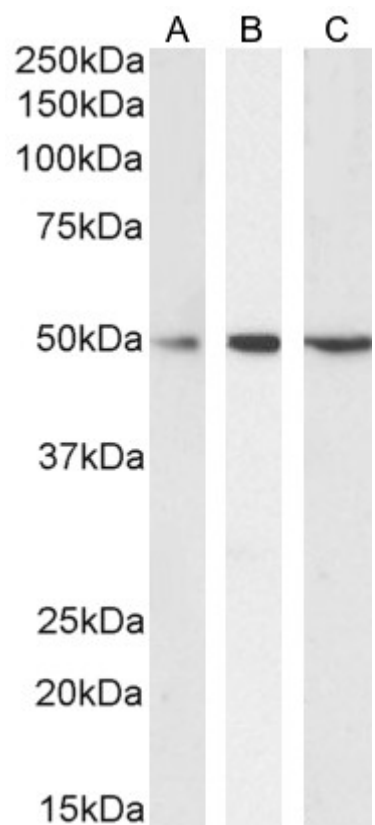
**Western blot:** Approx 50kDa band observed in Human Testis, Duodenum, Kidney and Tonsil lysates, and in lysates of cell lines Daudi, Jurkat and MOLT4 (calculated MW of 49.7kDa according to NP\_055944.2). Recommended concentration: 0.1-1µg/ml. Primary incubation 1 hour at room temperature.

**IHC:** In paraffin embedded Human Tonsil shows specific staining in dividing cells just outside a germinal centre. Recommended concentration, 3-5µg/ml.

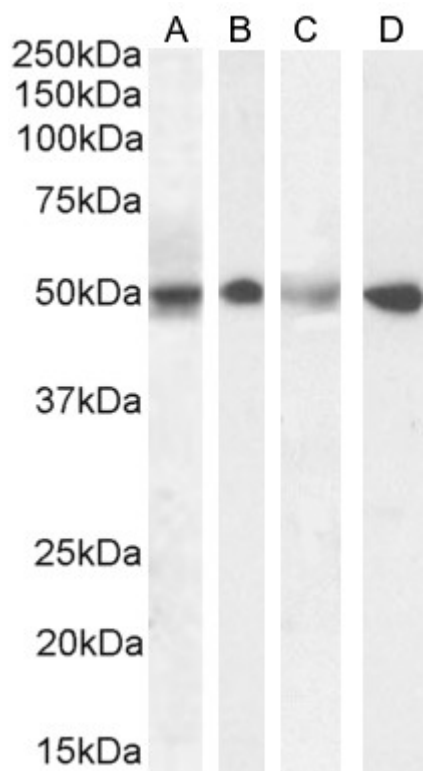
### Species Reactivity

**Tested:** Human

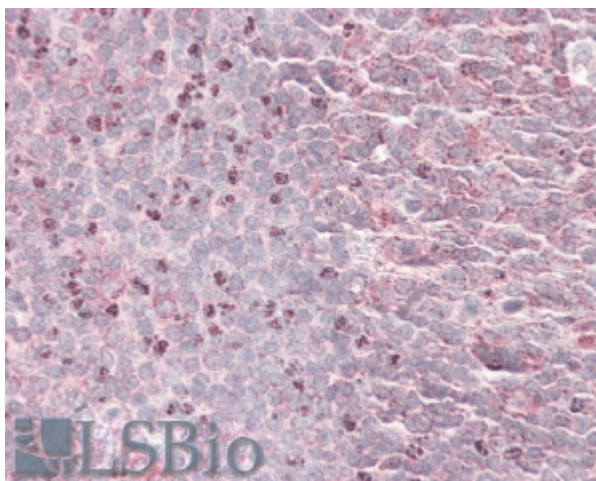
**Expected from sequence similarity:** Human, Cow, Dog



EB08932 (0.1µg/ml) staining of Daudi (A), Jurkat (B) and MOLT4 (C) cell lysate (35µg protein in RIPA buffer). Detected by chemiluminescence.



EB08932 (1µg/ml) staining of Human Testis (A), (0.1ug/ml) Duodenum (B), (0.5ug/ml) Kidney (C) and (0.3ug/ml) Tonsil (D) lysate (35µg protein in RIPA buffer). Detected by chemiluminescence.



EB08932 (3.8µg/ml) staining of paraffin embedded Human Tonsil. Steamed antigen retrieval with citrate buffer pH 6, AP-staining.