



UK Office

Everest Biotech Ltd

Cherwell Innovation Centre
77 Heyford Park
Upper Heyford
Oxfordshire
OX25 5HD
UK

Enquiries:

info@everestbiotech.com

Sales:

sales@everestbiotech.com

Tech support:

support@everestbiotech.com

Tel: +44 (0)1869 238326

Fax: +44 (0)1869 238327

US Office

Everest Biotech c/o Abcore

405 Maple Street, Suite A106
Ramona,
CA 92065
USA

Inquiries:

info@everestbiotech.com

Sales:

usasales@everestbiotech.com

Tech support:

support@everestbiotech.com

Tel: 888-320-4628 (toll-free)

Fax: 888-841-9041

www.everestbiotech.com

**Research Use Only. Not for
diagnostic or therapeutic use.**

EB05413 - Goat Anti-Septin 3 Antibody

Size: 100µg specific antibody in 200µl



Target Protein

Principal Names: SEPT3, septin 3, SEP3, CTA-250D10.3, MGC133218, bK250D10.3, OTTHUMP00000028742, neuronal-specific septin 3, G-Septin

Official Symbol: SEPT3

Accession Number(s): NP_663786.2; NP_061979.3

Human GeneID(s): [55964](#)

Non-Human GeneID(s): 24050 (mouse)

Important Comments: This antibody is expected to recognize both reported isoforms according to NP_663786.2 and NP_061979.3.

Immunogen

Peptide with sequence SELVPEPRPKPA-C, from the N Terminus of the protein sequence according to NP_663786.2; NP_061979.3.

Please note the [peptide](#) is available for sale.

Purification and Storage

Purified from goat serum by ammonium sulphate precipitation followed by antigen affinity chromatography using the immunizing peptide.

Supplied at 0.5 mg/ml in Tris saline, 0.02% sodium azide, pH7.3 with 0.5% bovine serum albumin.

Aliquot and store at -20°C. Minimize freezing and thawing.

Applications Tested

Peptide ELISA: antibody detection limit dilution 1:32000.

Western blot: Approx 40kDa band observed in Human Cerebellum and in Mouse and Rat Brain lysates (calculated MW of 40.7kDa according to Human NP_663786.2 and Rat NP_062248.2, and 40.6kDa according to Mouse NP_001345765.1). Recommended concentration: 0.03-0.5µg/ml. Primary incubation 1 hour at room temperature

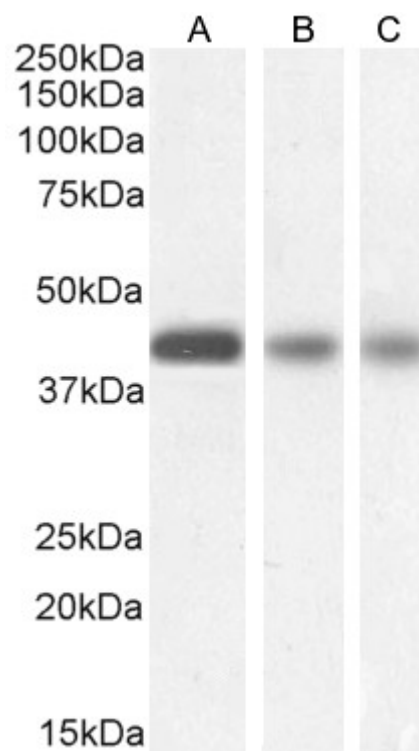
IHC: Paraffin embedded Human Brain (Cortex) and (Cerebellum) and Testis.

Recommended concentration: 3.75µg/ml.

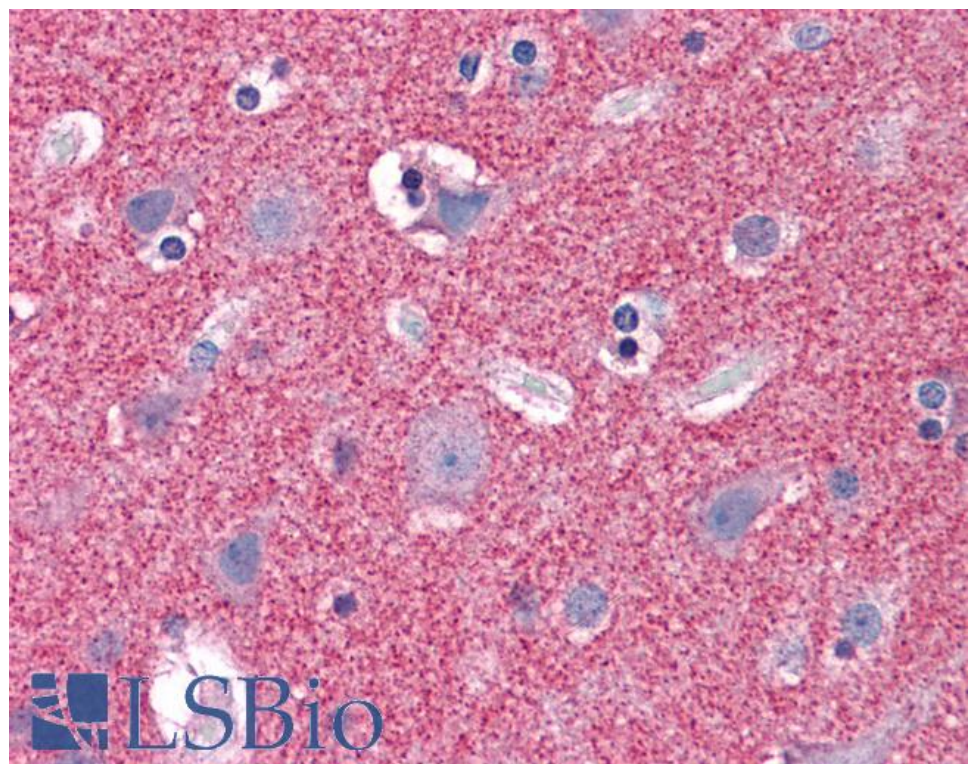
Species Reactivity

Tested: Human, Mouse, Rat

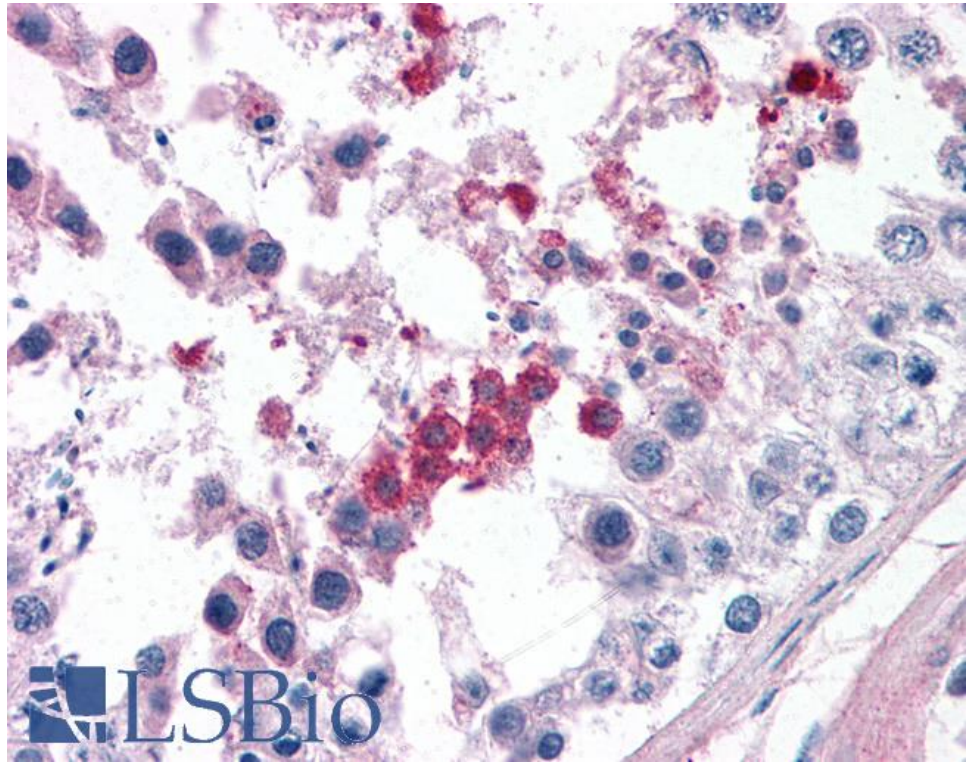
Expected from sequence similarity: Human, Mouse, Rat, Dog, Pig, Cow



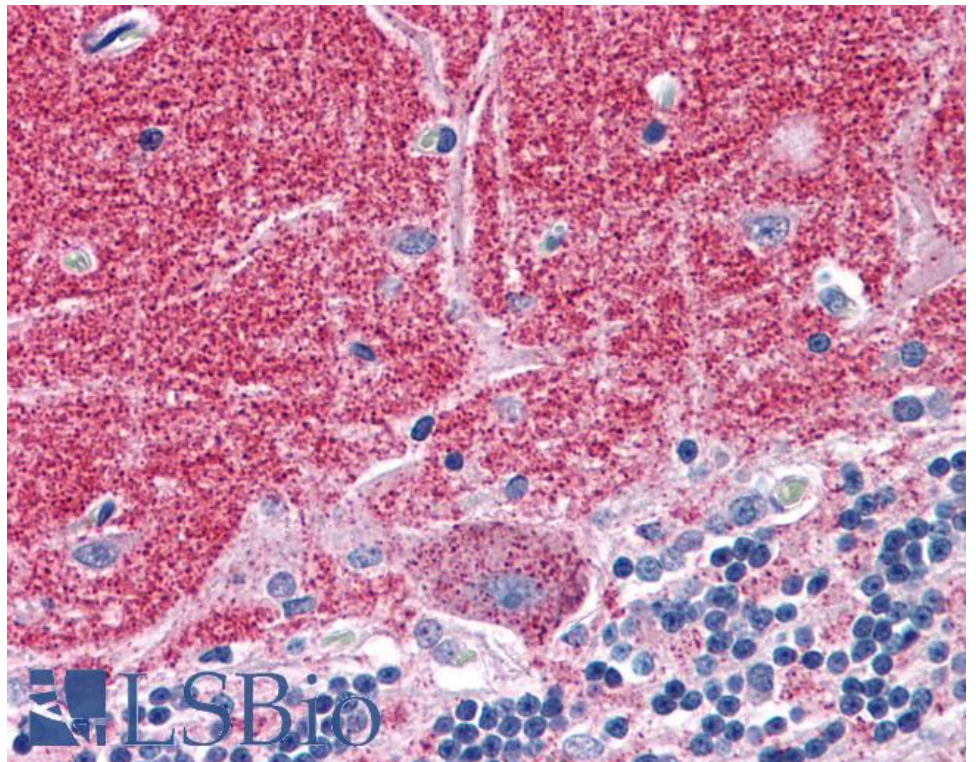
EB05413 (0.5 μ g/ml) staining of Human Cerebellum (A), (0.1 μ g/ml) Mouse (B) and (0.03 μ g/ml) Rat (C) Brain lysate (35 μ g protein in RIPA buffer).. Detected by chemiluminescence.



EB05413 (3.75 μ g/ml) staining of paraffin embedded Human Cortex. Steamed antigen retrieval with citrate buffer pH 6, AP-staining.



EB05413 (3.75µg/ml) staining of paraffin embedded Human Testis. Steamed antigen retrieval with citrate buffer pH 6, AP-staining.



EB05413 (3.75µg/ml) staining of paraffin embedded Human Cerebellum. Steamed antigen retrieval with citrate buffer pH 6, AP-staining.