



UK Office

Everest Biotech Ltd

Cherwell Innovation Centre
77 Heyford Park
Upper Heyford
Oxfordshire
OX25 5HD
UK

Enquiries:

info@everestbiotech.com

Sales:

sales@everestbiotech.com

Tech support:

support@everestbiotech.com

Tel: +44 (0)1869 238326

Fax: +44 (0)1869 238327

US Office

Everest Biotech c/o Abcore

405 Maple Street, Suite A106
Ramona,
CA 92065
USA

Inquiries:

info@everestbiotech.com

Sales:

usasales@everestbiotech.com

Tech support:

support@everestbiotech.com

Tel: 888-320-4628 (toll-free)

Fax: 888-841-9041

www.everestbiotech.com

**Research Use Only. Not for
diagnostic or therapeutic use.**

EB11450 - Goat Anti-SERCA2 / ATP2A2 Antibody

Size: 100µg specific antibody in 200µl



Target Protein

Principal Names: ATP2B, ATPase, Ca⁺⁺ dependent, slow-twitch, cardiac muscle-2, ATPase, Ca⁺⁺ transporting, cardiac muscle, slow twitch 2, calcium pump 2, calcium-transporting ATPase sarcoplasmic reticulum type, slow twitch skeletal muscle isoform, cardiac Ca²⁺ ATPase, DAR, DD, DKFZp686P0211, endoplasmic reticulum class 1/2 Ca(2+) ATPase, FLJ20293, FLJ38063, MGC45367, sarcoplasmic/endoplasmic reticulum calcium ATPase 2, SERCA2, SR Ca(2+)-ATPase 2, ATP2A2

Official Symbol: ATP2A2

Accession Number(s): NP_001672.1; NP_733765.1

Human GeneID(s): [488](#)

Non-Human GeneID(s): 11938 (mouse), 29693 (rat)

Important Comments: This antibody is expected to recognize both reported isoforms (NP_001672.1; NP_733765.1).

Immunogen

Peptide with sequence DELNPSAQRDACLN, from the internal region of the protein sequence according to NP_001672.1; NP_733765.1.

Please note the [peptide](#) is available for sale.

Purification and Storage

Purified from goat serum by ammonium sulphate precipitation followed by antigen affinity chromatography using the immunizing peptide.

Supplied at 0.5 mg/ml in Tris saline, 0.02% sodium azide, pH7.3 with 0.5% bovine serum albumin.

Aliquot and store at -20°C. Minimize freezing and thawing.

Applications Tested

Peptide ELISA: antibody detection limit dilution 1:128000.

Western blot: Approx 110kDa band observed in Human, Mouse and Rat Heart lysates (calculated MW of 110kDa according to NP_001672.1). Recommended concentration: 0.1-0.3µg/ml. Primary incubation was 1 hour.

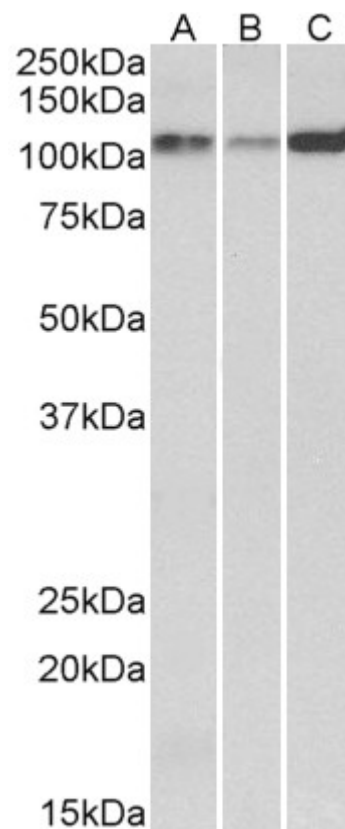
IHC: Paraffin embedded Human Heart. Recommended concentration: 5µg/ml.

Immunofluorescence: Strong expression of the protein seen in the endoplasmic reticulum of HeLa cells. Recommended concentration: 10µg/ml.

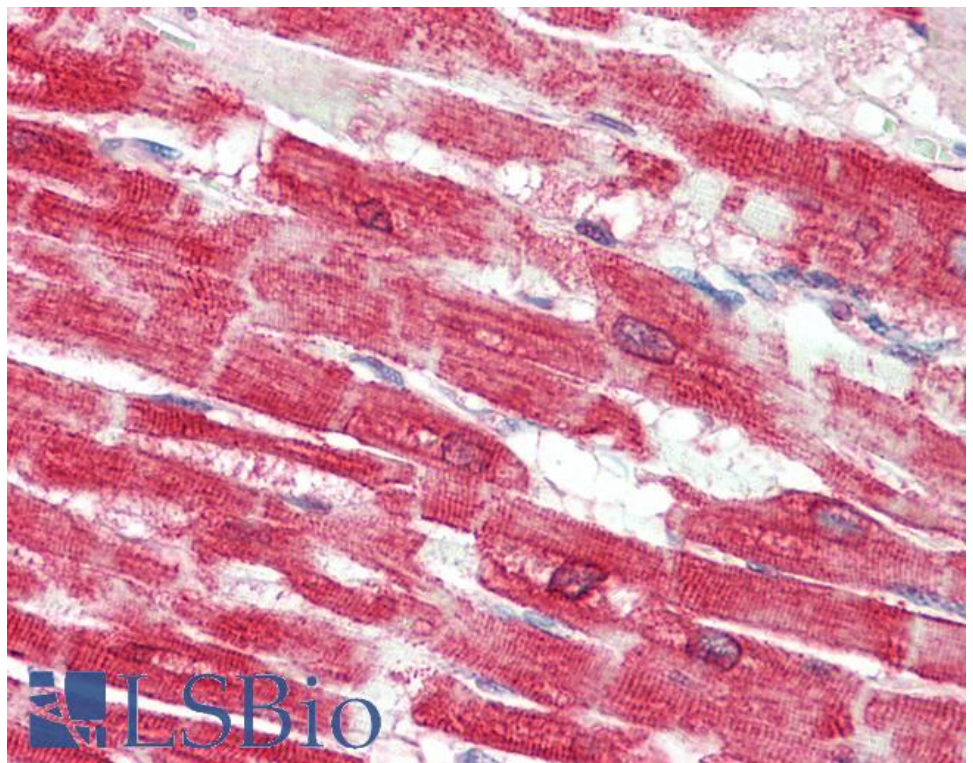
Species Reactivity

Tested: Human, Mouse, Rat

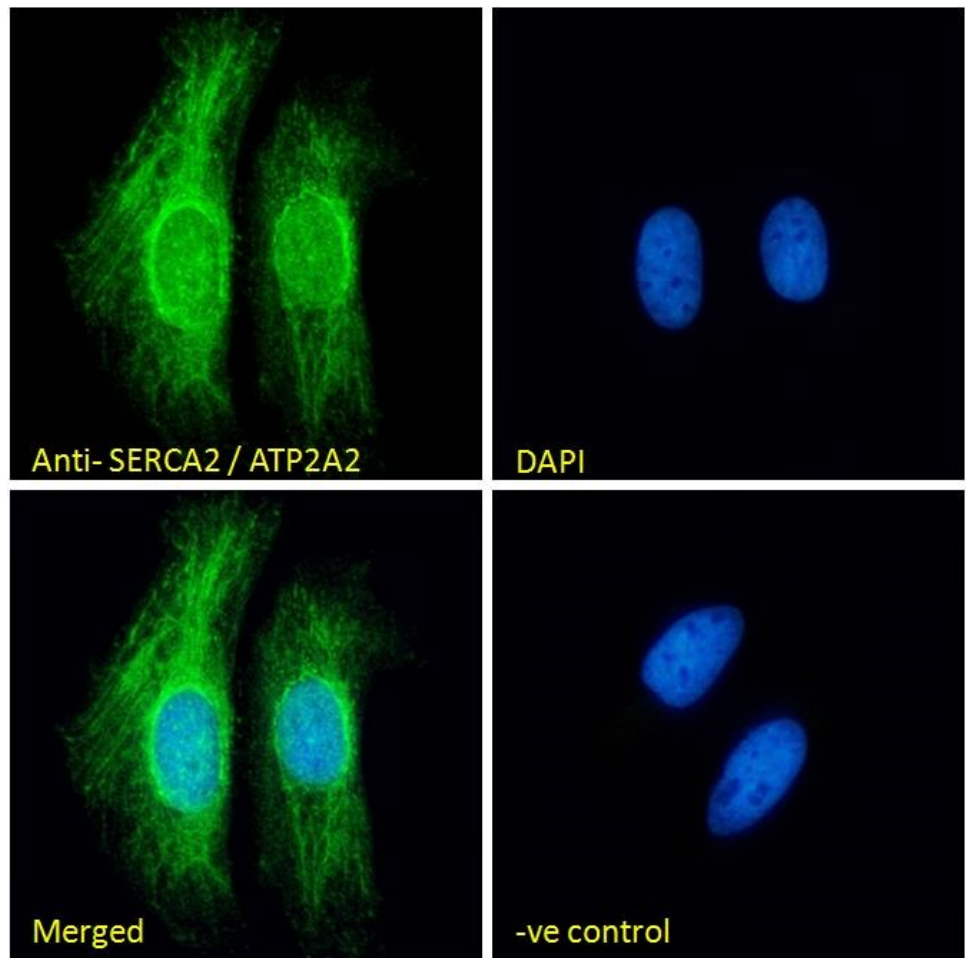
Expected from sequence similarity: Human, Mouse, Rat, Dog, Pig



EB11450 (0.1 μ g/ml) staining of Human (A), Mouse (B) and Rat (C) Heart lysates (35 μ g protein in RIPA buffer).
Detected by chemiluminescence.



EB11450 (5 μ g/ml) staining of paraffin embedded Human Heart. Steamed antigen retrieval with citrate buffer pH 6, AP-staining.



EB11450 immunofluorescence analysis of paraformaldehyde fixed HeLa cells, permeabilized with 0.15% Triton. Primary incubation 1hr (10ug/ml) followed by Alexa Fluor 488 secondary antibody (2ug/ml), showing endoplasmic reticulum staining. The nuclear stain is DAPI (blue). Negative control: Unimmunized goat IgG (10ug/ml) followed by Alexa Fluor 488 secondary antibody (2ug/ml).