



## UK Office

### Everest Biotech Ltd

Cherwell Innovation Centre  
77 Heyford Park  
Upper Heyford  
Oxfordshire  
OX25 5HD  
UK

Enquiries:

[info@everestbiotech.com](mailto:info@everestbiotech.com)

Sales:

[sales@everestbiotech.com](mailto:sales@everestbiotech.com)

Tech support:

[support@everestbiotech.com](mailto:support@everestbiotech.com)

Tel: +44 (0)1869 238326

[www.everestbiotech.com](http://www.everestbiotech.com)

**Research Use Only. Not for  
diagnostic or therapeutic use.**

## EB06786 - Goat Anti-Serotonin receptor 2C / HTR2C Antibody

Size: 100µg specific antibody in 200µl



### Target Protein

**Principal Names:** HTR2C, 5-hydroxytryptamine (serotonin) receptor 2C, HGNC:5295, 5-HT2C, HTR1C, RP11-810O3.1, 5-HTR2C, OTTHUMP00000023868, serotonin 5-HT-2C receptor, serotonin receptor 2C

**Official Symbol:** HTR2C

**Accession Number(s):** NP\_000859.1

**Human GeneID(s):** [3358](#)

### Immunogen

Peptide with sequence C-QVENLELPVN, from the internal region of the protein sequence according to NP\_000859.1.

Please note the [peptide](#) is available for sale.

### Purification and Storage

Purified from goat serum by ammonium sulphate precipitation followed by antigen affinity chromatography using the immunizing peptide.

Supplied at 0.5 mg/ml in Tris saline, 0.02% sodium azide, pH7.3 with 0.5% bovine serum albumin.

Aliquot and store at -20°C. Minimize freezing and thawing.

### Applications Tested

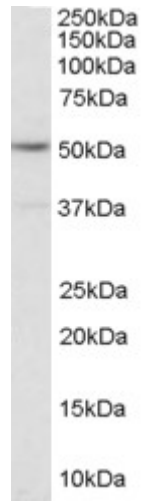
**Peptide ELISA:** antibody detection limit dilution 1:64000.

**Western blot:** Approx 50kDa band observed in lysates of Human EBV immortalised Lymphoblastoids, T cell MOLT4 and monocytic cell line U937 (calculated MW of 51.8kDa according to NP\_000859.1). Recommended concentration: 1-3µg/ml.

### Species Reactivity

**Tested:** Human

**Expected from sequence similarity:** Human, Mouse, Rat, Dog, Cow



EB06786 (1µg/ml) staining of EBV immortalised Lymphoblastoid lysate (35µg protein in RIPA buffer). Primary incubation was 1 hour. Detected by chemiluminescence.