



UK Office

Everest Biotech Ltd

Cherwell Innovation Centre
77 Heyford Park
Upper Heyford
Oxfordshire
OX25 5HD
UK

Enquiries:

info@everestbiotech.com

Sales:

sales@everestbiotech.com

Tech support:

support@everestbiotech.com

Tel: +44 (0)1869 238326

Fax: +44 (0)1869 238327

US Office

Everest Biotech c/o Abcore

405 Maple Street, Suite A106
Ramona,
CA 92065
USA

Inquiries:

info@everestbiotech.com

Sales:

usasales@everestbiotech.com

Tech support:

support@everestbiotech.com

Tel: 888-320-4628 (toll-free)

Fax: 888-841-9041

www.everestbiotech.com

**Research Use Only. Not for
diagnostic or therapeutic use.**

EB09495 - Goat Anti-Serotonin Receptor 3B / HTR3B Antibody

Size: 100µg specific antibody in 200µl



Target Protein

Principal Names: HTR3B, 5-hydroxytryptamine (serotonin) receptor 3B, 5-HT3B, 5-hydroxytryptamine 3 receptor B subunit, serotonin-gated ion channel subunit

Official Symbol: HTR3B

Accession Number(s): NP_006019.1

Human GeneID(s): [9177](#)

Immunogen

Peptide with sequence C-SNYLQTQDQTDQQE, from the internal region (near C-terminus) of the protein sequence according to NP_006019.1.

Please note the [peptide](#) is available for sale.

Purification and Storage

Purified from goat serum by ammonium sulphate precipitation followed by antigen affinity chromatography using the immunizing peptide.

Supplied at 0.5 mg/ml in Tris saline, 0.02% sodium azide, pH7.3 with 0.5% bovine serum albumin.

Aliquot and store at -20°C. Minimize freezing and thawing.

Applications Tested

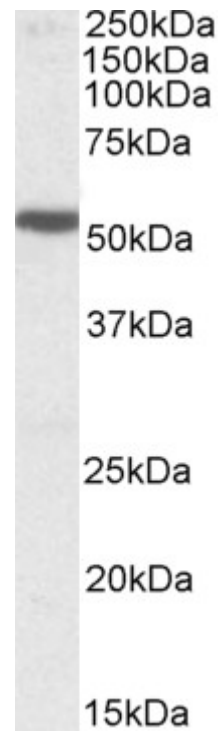
Peptide ELISA: antibody detection limit dilution 1:16000.

Western blot: Approx 51kDa band observed in Human Brain (Cerebral Cortex, Hippocampus and Amygdala) lysates (calculated MW of 50.3kDa according to NP_006019.1). Recommended concentration: 1-3µg/ml.

Species Reactivity

Tested: Human

Expected from sequence similarity: Human



EB09495 (1µg/ml) staining of Human Cerebral Cortex lysate (35µg protein in RIPA buffer). Primary incubation was 1 hour. Detected by chemiluminescence.