



UK Office

Everest Biotech Ltd

Cherwell Innovation Centre
77 Heyford Park
Upper Heyford
Oxfordshire
OX25 5HD
UK

Enquiries:

info@everestbiotech.com

Sales:

sales@everestbiotech.com

Tech support:

support@everestbiotech.com

Tel: +44 (0)1869 238326

Fax: +44 (0)1869 238327

US Office

Everest Biotech c/o Abcore

405 Maple Street, Suite A106
Ramona,
CA 92065
USA

Inquiries:

info@everestbiotech.com

Sales:

usasales@everestbiotech.com

Tech support:

support@everestbiotech.com

Tel: 888-320-4628 (toll-free)

Fax: 888-841-9041

www.everestbiotech.com

**Research Use Only. Not for
diagnostic or therapeutic use.**

EB07715 - Goat Anti-SERPINB9 Antibody

Size: 100µg specific antibody in 200µl



Target Protein

Principal Names: SERPINB9, serpin peptidase inhibitor, clade B (ovalbumin), member 9, CAP-3, CAP3, PI9, protease inhibitor 9 (ovalbumin type), serine (or cysteine) proteinase inhibitor, clade B (ovalbumin), member 9

Official Symbol: SERPINB9

Accession Number(s): NP_004146.1

Human GeneID(s): [5272](#)

Non-Human GeneID(s): 20723 (mouse)

Immunogen

Peptide with sequence C-PKFKLQEDYDME, from the internal region of the protein sequence according to NP_004146.1.

Please note the [peptide](#) is available for sale.

Purification and Storage

Purified from goat serum by ammonium sulphate precipitation followed by antigen affinity chromatography using the immunizing peptide.

Supplied at 0.5 mg/ml in Tris saline, 0.02% sodium azide, pH7.3 with 0.5% bovine serum albumin.

Aliquot and store at -20°C. Minimize freezing and thawing.

Applications Tested

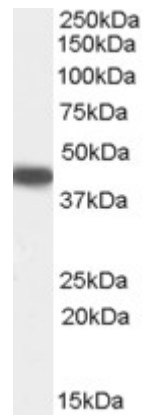
Peptide ELISA: antibody detection limit dilution 1:32000.

Western blot: Approx 40-45kDa band observed in Human Lung, Placenta and Tonsil lysates (calculated MW of 42.4kDa according to NP_004146.1). Recommended concentration: 0.3-1µg/ml.

Species Reactivity

Tested: Human

Expected from sequence similarity: Human, Mouse, Rat



EB07715 (0.5µg/ml) staining of Human Placenta lysate (35µg protein in RIPA buffer). Primary incubation was 1 hour. Detected by chemiluminescence.