



UK Office

Everest Biotech Ltd

Cherwell Innovation Centre
77 Heyford Park
Upper Heyford
Oxfordshire
OX25 5HD
UK

Enquiries:

info@everestbiotech.com

Sales:

sales@everestbiotech.com

Tech support:

support@everestbiotech.com

Tel: +44 (0)1869 238326

Fax: +44 (0)1869 238327

US Office

Everest Biotech c/o Abcore

405 Maple Street, Suite A106
Ramona,
CA 92065
USA

Inquiries:

info@everestbiotech.com

Sales:

usasales@everestbiotech.com

Tech support:

support@everestbiotech.com

Tel: 888-320-4628 (toll-free)

Fax: 888-841-9041

www.everestbiotech.com

**Research Use Only. Not for
diagnostic or therapeutic use.**

EB05148 - Goat Anti-SET / I2 alpha PP2A Antibody

Size: 100µg specific antibody in 200µl



Target Protein

Principal Names: SET, SET nuclear oncogene, 2PP2A, I2PP2A, IGAAD, IPP2A2, PHAPII, TAF-I, TAF-IBETA, LA-DR-associated protein II, OTTHUMP00000022286, SET translocation (myeloid leukemia-associated), Template-Activating Factor-I, chromatin remodelling factor, inhibitor of granzyme A-activated DNase, inhibitor-2 of protein phosphatase-2A, protein phosphatase type 2A inhibitor, template-activating factor I, HLA-DR-associated protein II

Official Symbol: SET

Accession Number(s): NP_003002.2

Human GeneID(s): [6418](#)

Important Comments: This antibody is expected to recognize isoform 2 (NP_003002.2).

Immunogen

Peptide with sequence SAPAAKVSKKELNS-C, from the N Terminus of the protein sequence according to NP_003002.2.

Please note the [peptide](#) is available for sale.

Purification and Storage

Purified from goat serum by ammonium sulphate precipitation followed by antigen affinity chromatography using the immunizing peptide.

Supplied at 0.5 mg/ml in Tris saline, 0.02% sodium azide, pH7.3 with 0.5% bovine serum albumin.

Aliquot and store at -20°C. Minimize freezing and thawing.

Applications Tested

Peptide ELISA: antibody detection limit dilution 1:128000.

Western blot: Approx 38kDa band observed in lysates of Human Kidney lysates and of cell lines Daudi and Molt4 (calculated MW of 32.1kDa according to NP_003002.2).

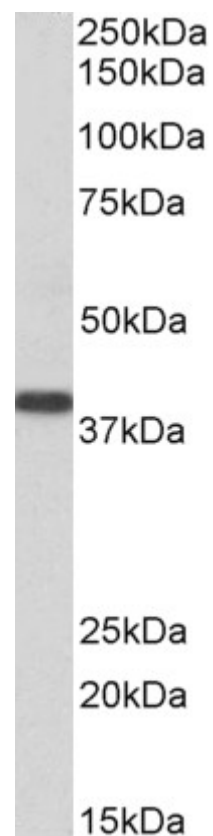
Recommended concentration: 0.3-1µg/ml. Primary incubation was 1 hour.

IHC: Paraffin embedded Human Kidney. Recommended concentration: 7µg/ml.

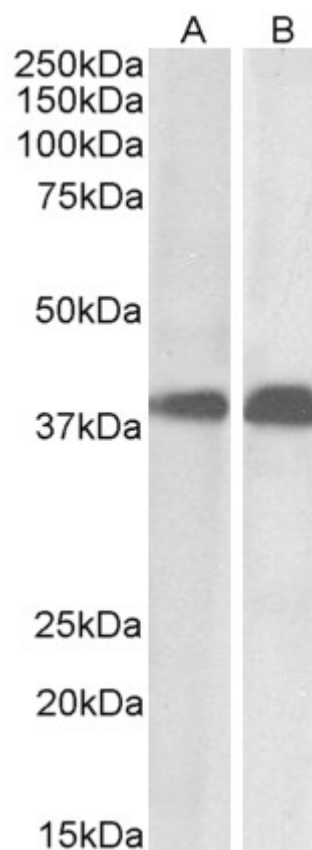
Species Reactivity

Tested: Human

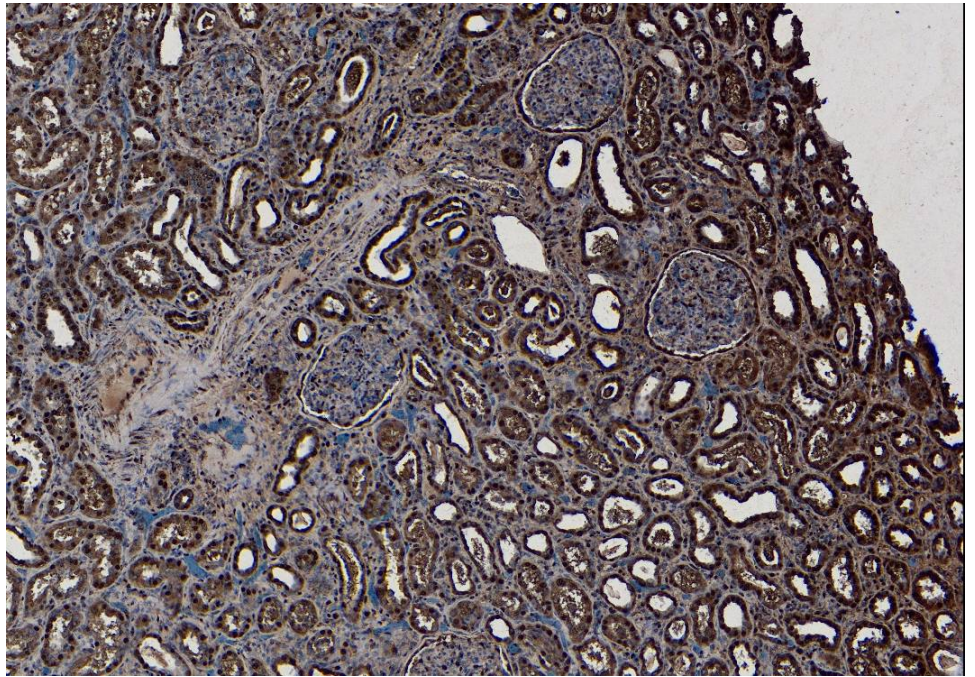
Expected from sequence similarity: Human, Cow



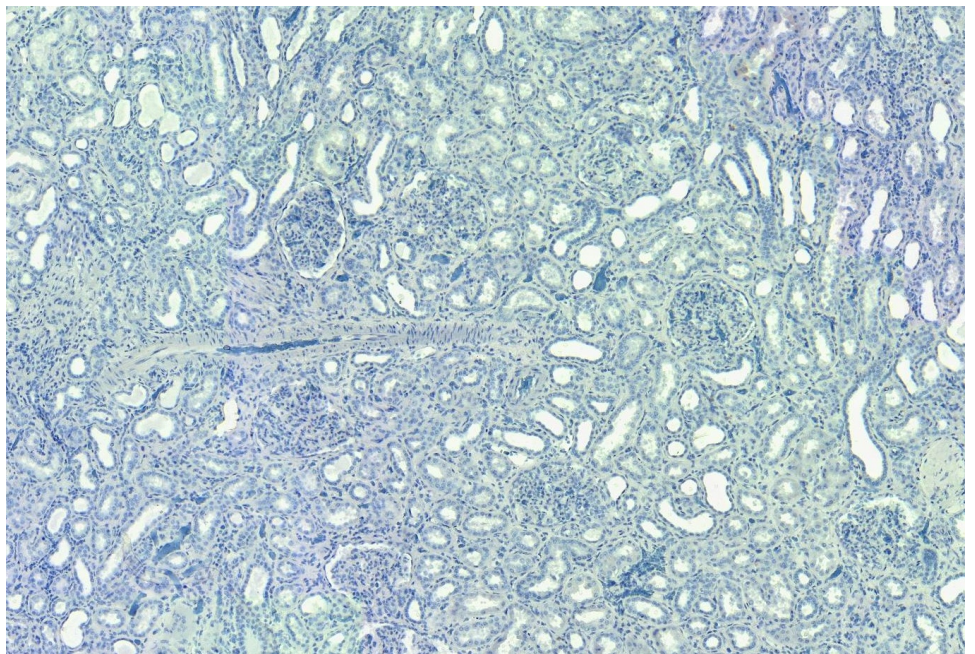
EB05148 (0.3 μ g/ml) staining of Human Kidney lysate (35 μ g protein in RIPA buffer). Detected by chemiluminescence.



EB05148 (0.01 μ g/ml) staining of Daudi (A) and Molt4 (B) cell lysate (35 μ g protein in RIPA buffer). Detected by chemiluminescence.



EB05148 (7 μ g/ml) staining of paraffin embedded Human Kidney. Heat induced antigen retrieval with citrate buffer pH 6, HRP-staining.



EB05148 Negative Control showing staining of paraffin embedded Human Kidney, with no primary antibody.