



Everest Biotech Ltd
Cherwell Innovation Centre
77 Heyford Park
Upper Heyford
Oxfordshire
OX25 5HD, United Kingdom

everestbiotech.com

sales@everestbiotech.com

support@everestbiotech.com

Tel +44 1869 238326

Fax +44 1869 238327

Research Use Only. Not for diagnostic or therapeutic use.

Storage: For long-term storage keep aliquots at -20°C. (Store no longer than 12 months at 4°C). Minimize freezing and thawing.

EB05734 - Goat Anti-SETMAR Antibody

Size: 100µg specific antibody in 200µl



Target Protein

Principal Names: SET domain and mariner transposase fusion, METNASE, SET domain and mariner transposase fusion gene, SETMAR

Official Symbol: SETMAR

Accession Number(s): NP_006506.3

Human GeneID(s): [6419](#)

Immunogen

Peptide with sequence RWQKCVCNGSYFD, from the C Terminus of the protein sequence according to NP_006506.3.

Please note the [peptide](#) is available for sale.

Purification and Storage

Purified from goat serum by ammonium sulphate precipitation followed by antigen affinity chromatography using the immunizing peptide.

Supplied at 0.5 mg/ml in Tris saline, 0.02% sodium azide, pH7.3 with 0.5% bovine serum albumin.

Aliquot and store at -20°C. Minimize freezing and thawing.

Applications Tested

Peptide ELISA: antibody detection limit dilution 1:16000.

Western blot: Approx 70-75kDa band seen in Daudi lysate. Recommended for use at 1-3µg/ml.

Species Reactivity

Tested: Human

Expected from sequence similarity: Human, Cow

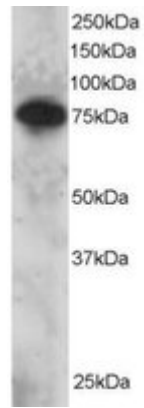
Specific Reference

The goat polyclonal antibody used in this paper was manufactured by us:

Van Duyne R, Easley R, Wu W, Berro R, Pedati C, Klase Z, Kehn-Hall K, Flynn EK, Symer DE, Kashanchi F.

Lysine methylation of HIV-1 Tat regulates transcriptional activity of the viral LTR. *Retrovirology*. 2008 May 22;5:40.

PMID: 18498648



EB05734 staining (2 μ g/ml) of Daudi lysate (RIPA buffer, 30 μ g total protein per lane). Primary incubated for 12 hour. Detected by western blot using chemiluminescence.