



UK Office

Everest Biotech Ltd

Cherwell Innovation Centre
77 Heyford Park
Upper Heyford
Oxfordshire
OX25 5HD
UK

Enquiries:

info@everestbiotech.com

Sales:

sales@everestbiotech.com

Tech support:

support@everestbiotech.com

Tel: +44 (0)1869 238326

www.everestbiotech.com

**Research Use Only. Not for
diagnostic or therapeutic use.**

EB07622 - Goat Anti-SFRP2 Antibody

Size: 100µg specific antibody in 200µl



Target Protein

Principal Names: SFRP2, secreted frizzled-related protein 2, FRP-2, SARP1, SDF-5, secreted apoptosis related protein 1

Official Symbol: SFRP2

Accession Number(s): NP_003004.1

Human GeneID(s): [6423](#)

Non-Human GeneID(s): 20319 (mouse), 310552 (rat)

Immunogen

Peptide with sequence C-KRWQKGQREFKR, from the C Terminus of the protein sequence according to NP_003004.1.

Please note the [peptide](#) is available for sale.

Purification and Storage

Purified from goat serum by ammonium sulphate precipitation followed by antigen affinity chromatography using the immunizing peptide.

Supplied at 0.5 mg/ml in Tris saline, 0.02% sodium azide, pH7.3 with 0.5% bovine serum albumin.

Aliquot and store at -20°C. Minimize freezing and thawing.

Applications Tested

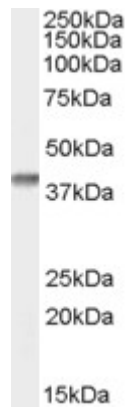
Peptide ELISA: antibody detection limit dilution 1:32000.

Western blot: Approx 38kDa band observed in Human Duodenum lysates (calculated MW of 33.5kDa according to NP_003004.1). Recommended concentration: 1-3µg/ml.

Species Reactivity

Tested: Human

Expected from sequence similarity: Human, Mouse, Rat, Dog



EB07622 (0.1µg/ml) staining of Human Duodenum lysate (35µg protein in RIPA buffer). Primary incubation was 1 hour. Detected by chemiluminescence.