



## UK Office

### Everest Biotech Ltd

Cherwell Innovation Centre  
77 Heyford Park  
Upper Heyford  
Oxfordshire  
OX25 5HD  
UK

Enquiries:

[info@everestbiotech.com](mailto:info@everestbiotech.com)

Sales:

[sales@everestbiotech.com](mailto:sales@everestbiotech.com)

Tech support:

[support@everestbiotech.com](mailto:support@everestbiotech.com)

Tel: +44 (0)1869 238326

Fax: +44 (0)1869 238327

## US Office

### Everest Biotech c/o Abcore

405 Maple Street, Suite A106  
Ramona,  
CA 92065  
USA

Inquiries:

[info@everestbiotech.com](mailto:info@everestbiotech.com)

Sales:

[usasales@everestbiotech.com](mailto:usasales@everestbiotech.com)

Tech support:

[support@everestbiotech.com](mailto:support@everestbiotech.com)

Tel: 888-320-4628 (toll-free)

Fax: 888-841-9041

[www.everestbiotech.com](http://www.everestbiotech.com)

**Research Use Only. Not for  
diagnostic or therapeutic use.**

## EB09115 - Goat Anti-SFRP4 Antibody

Size: 100µg specific antibody in 200µl



### Target Protein

**Principal Names:** SFRP4, secreted frizzled-related protein 4, FRP-4, FRPHE, MGC26498, secreted frizzled-related protein 4

**Official Symbol:** SFRP4

**Accession Number(s):** NP\_003005.2

**Human GeneID(s):** [6424](#)

**Non-Human GeneID(s):** 20379 (mouse), 89803 (rat)

### Immunogen

Peptide with sequence TNSSCQCPHILPHQD, from the internal region of the protein sequence according to NP\_003005.2.

Please note the [peptide](#) is available for sale.

### Purification and Storage

Purified from goat serum by ammonium sulphate precipitation followed by antigen affinity chromatography using the immunizing peptide.

Supplied at 0.5 mg/ml in Tris saline, 0.02% sodium azide, pH7.3 with 0.5% bovine serum albumin.

Aliquot and store at -20°C. Minimize freezing and thawing.

### Applications Tested

**Peptide ELISA:** antibody detection limit dilution 1:32000.

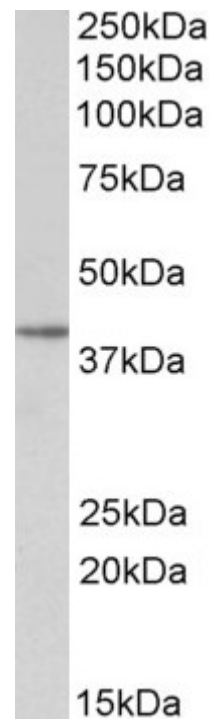
**Western blot:** Approx 40kDa band observed in Human Uterus lysates (calculated MW of 39.8kDa according to NP\_003005.2). Recommended concentration: 1-3µg/ml.

**IHC:** In paraffin embedded Human Uterus shows granular staining in the apical cytoplasm of the endometrial gland. Recommended concentration, 2-4µg/ml.

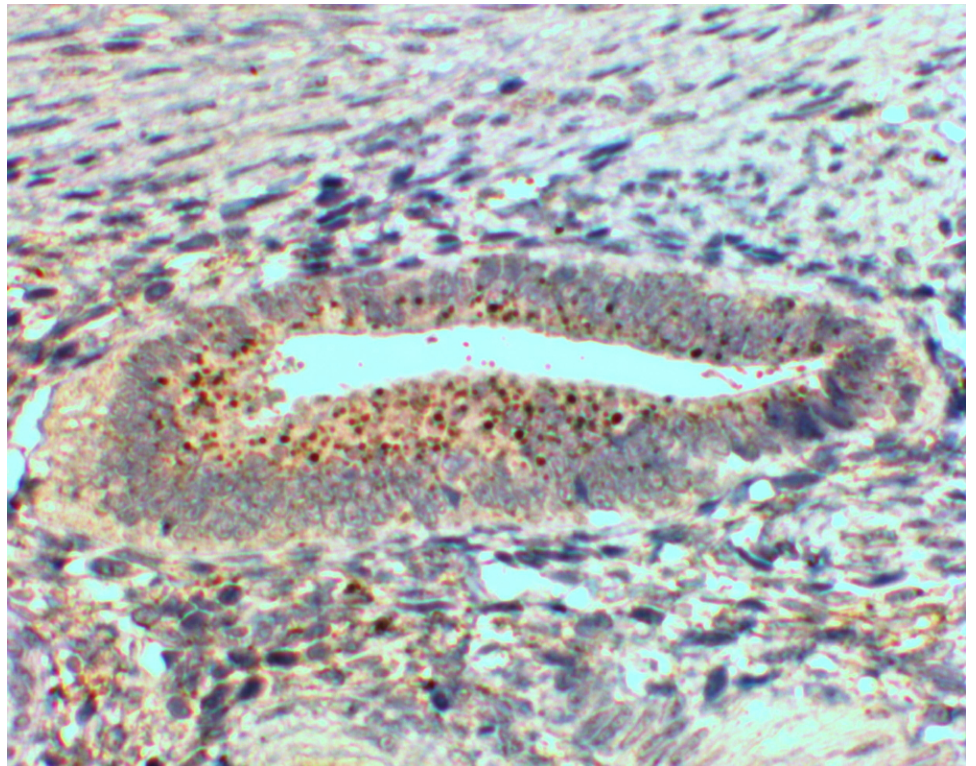
### Species Reactivity

**Tested:** Human

**Expected from sequence similarity:** Human, Mouse, Rat, Cow, Pig



EB09115 (0.5 $\mu$ g/ml) staining of Human Uterus lysate (35 $\mu$ g protein in RIPA buffer). Primary incubation was 1 hour. Detected by chemiluminescence.



EB09115 (2 $\mu$ g/ml) staining of paraffin embedded Human Uterus. Steamed antigen retrieval with Tris/EDTA buffer pH 9, HRP-staining.