



## UK Office

### Everest Biotech Ltd

Cherwell Innovation Centre  
77 Heyford Park  
Upper Heyford  
Oxfordshire  
OX25 5HD  
UK

Enquiries:

[info@everestbiotech.com](mailto:info@everestbiotech.com)

Sales:

[sales@everestbiotech.com](mailto:sales@everestbiotech.com)

Tech support:

[support@everestbiotech.com](mailto:support@everestbiotech.com)

Tel: +44 (0)1869 238326

Fax: +44 (0)1869 238327

## US Office

### Everest Biotech c/o Abcore

405 Maple Street, Suite A106  
Ramona,  
CA 92065  
USA

Inquiries:

[info@everestbiotech.com](mailto:info@everestbiotech.com)

Sales:

[usasales@everestbiotech.com](mailto:usasales@everestbiotech.com)

Tech support:

[support@everestbiotech.com](mailto:support@everestbiotech.com)

Tel: 888-320-4628 (toll-free)

Fax: 888-841-9041

[www.everestbiotech.com](http://www.everestbiotech.com)

**Research Use Only. Not for  
diagnostic or therapeutic use.**

## EB11841 - Goat Anti-Sgta (mouse aa84-97) Antibody

Size: 100µg specific antibody in 200µl



### Target Protein

**Principal Names:** 5330427H01Rik, A1194281, alpha-SGT, D10Ert190e, Sgt, Sgta, small glutamine-rich tetratricopeptide repeat (TPR) containing protein, small glutamine-rich tetratricopeptide repeat (TPR)-containing, alpha, small glutamine-rich tetratricopeptide repeat-containing protein alpha, Stg

**Official Symbol:** Sgta

**Accession Number(s):** NP\_078775.1

**Human GeneID(s):** [6449](#)

**Non-Human GeneID(s):** 52551 (mouse), 64667 (rat)

### Immunogen

Peptide with sequence C-PSEEDSAEAERLKT, from the internal region of the protein sequence according to NP\_078775.1.

Please note the [peptide](#) is available for sale.

### Purification and Storage

Purified from goat serum by ammonium sulphate precipitation followed by antigen affinity chromatography using the immunizing peptide.

Supplied at 0.5 mg/ml in Tris saline, 0.02% sodium azide, pH7.3 with 0.5% bovine serum albumin.

Aliquot and store at -20°C. Minimize freezing and thawing.

### Applications Tested

**Peptide ELISA:** antibody detection limit dilution 1:2000.

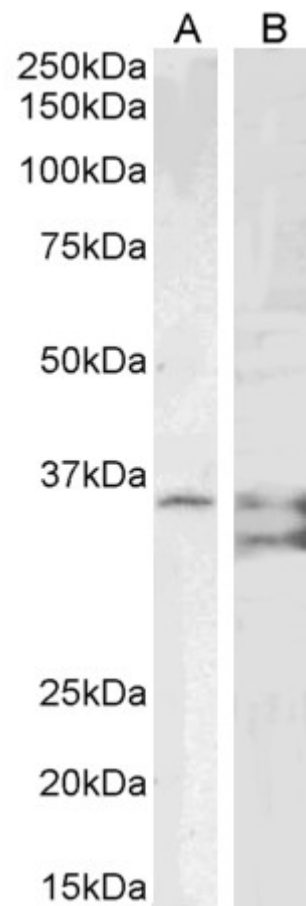
**Western blot:** Approx 35kDa band observed in lysates of cell line PD19 and doublet of 30+35kDa in lysates of cell line K562 (calculated MW of 34.3kDa according to NP\_078775.1). Recommended concentration: 1-2µg/ml. Primary incubation was 1 hour.

**IHC:** Paraffin embedded Human Testis. Recommended concentration: 5µg/ml.

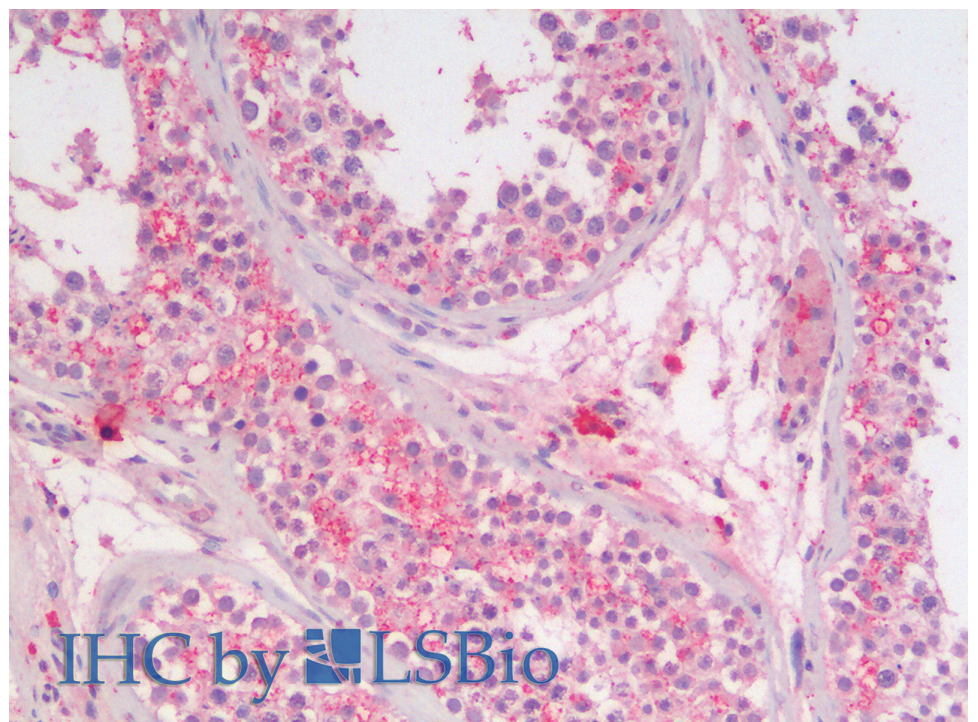
### Species Reactivity

**Tested:** Human

**Expected from sequence similarity:** Human, Mouse, Rat, Dog, Pig, Cow



EB11841 (1 $\mu$ g/ml) staining of PD19 (A) and (2 $\mu$ g/ml) K562 (B) cell lysate (35 $\mu$ g protein in RIPA buffer). Detected by chemiluminescence.



EB11841 (5 $\mu$ g/ml) staining of paraffin embedded Human Testis. Steamed antigen retrieval with citrate buffer pH 6, AP-staining.