



Everest Biotech Ltd
Cherwell Innovation Centre
77 Heyford Park
Upper Heyford
Oxfordshire
OX25 5HD, United Kingdom

everestbiotech.com

sales@everestbiotech.com

support@everestbiotech.com

Tel +44 1869 238326

Fax +44 1869 238327

Research Use Only. Not for diagnostic or therapeutic use.

Storage: For long-term storage keep aliquots at -20°C. (Store no longer than 12 months at 4°C). Minimize freezing and thawing.

EB06271 - Goat Anti-SH3BP1 Antibody

Size: 100µg specific antibody in 200µl



Target Protein

Principal Names: OTTHUMP00000028981, SH3 domain binding protein 1, SH3-domain binding protein 1, SH3BP1

Official Symbol: SH3BP1

Accession Number(s): NP_061830.3

Human GeneID(s): [23616](#)

Immunogen

Peptide with sequence C-PQPRPRSLASETN, from the C Terminus of the protein sequence according to NP_061830.3.

Please note the [peptide](#) is available for sale.

Purification and Storage

Purified from goat serum by ammonium sulphate precipitation followed by antigen affinity chromatography using the immunizing peptide.

Supplied at 0.5 mg/ml in Tris saline, 0.02% sodium azide, pH7.3 with 0.5% bovine serum albumin.

Aliquot and store at -20°C. Minimize freezing and thawing.

Applications Tested

Peptide ELISA: antibody detection limit dilution 1:16000.

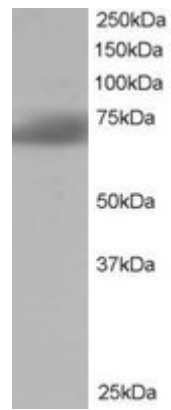
Western blot: Approx 70kDa band observed in Human Lung and Kidney lysates (predicted MW of 71kDa according to NP_061830). Recommended for use at 1-3µg/ml.

IHC: In paraffin embedded Human Kidney, stains the cytoplasm of lymphoid cells in the interstitial parenchyma and of lymphocytes in a glomerulus. Recommended concentration, 0.3µg/ml.

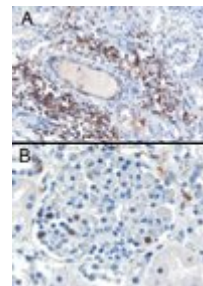
Species Reactivity

Tested: Human

Expected from sequence similarity: Human



EB06271 staining (1 μ g/ml) of Human Brain lysate (RIPA buffer, 35 μ g total protein per lane). Primary incubated for 1 hour. Detected by western blot using chemiluminescence.



EB06271 (0.3 μ g/ml) staining of paraffin embedded Human Kidney. Cytoplasmic staining of lymphocytes A) in the interstitial parenchyma of the kidney. B) in a glomerulus of the kidney. Microwaved antigen retrieval with citrate buffer pH 6, HRP-staining.