



## UK Office

### Everest Biotech Ltd

Cherwell Innovation Centre  
77 Heyford Park  
Upper Heyford  
Oxfordshire  
OX25 5HD  
UK

Enquiries:

[info@everestbiotech.com](mailto:info@everestbiotech.com)

Sales:

[sales@everestbiotech.com](mailto:sales@everestbiotech.com)

Tech support:

[support@everestbiotech.com](mailto:support@everestbiotech.com)

Tel: +44 (0)1869 238326

Fax: +44 (0)1869 238327

## US Office

### Everest Biotech c/o Abcore

405 Maple Street, Suite A106  
Ramona,  
CA 92065  
USA

Inquiries:

[info@everestbiotech.com](mailto:info@everestbiotech.com)

Sales:

[usasales@everestbiotech.com](mailto:usasales@everestbiotech.com)

Tech support:

[support@everestbiotech.com](mailto:support@everestbiotech.com)

Tel: 888-320-4628 (toll-free)

Fax: 888-841-9041

[www.everestbiotech.com](http://www.everestbiotech.com)

**Research Use Only. Not for  
diagnostic or therapeutic use.**

## EB05436 - Goat Anti-SH3KBP1 (N Terminus) Antibody

Size: 100µg specific antibody in 200µl



### Target Protein

**Principal Names:** SH3KBP1, SH3-domain kinase binding protein 1, RP11-345L8.1, CD2BP3, CIN85, GIG10, HSB-1, HSB1, MIG18, CD2-binding protein 3, OTTHUMP00000023022, OTTHUMP00000023024, OTTHUMP00000023025, OTTHUMP00000023028, SH3 domain-containing kinase-binding protein 1, Src family kinase-binding protein 1, c-Cbl-interacting protein, cbl-interacting protein of 85 kDa, human Src family kinase-binding protein 1, migration-inducing gene 18, src-related kinase binding protein-1

**Official Symbol:** SH3KBP1

**Accession Number(s):** NP\_114098.1

**Human GeneID(s):** [30011](#)

**Non-Human GeneID(s):** 58194 (mouse), 84357 (rat)

**Important Comments:** This antibody is expected to recognize isoform a (NP\_114098.1) only.

### Immunogen

Peptide with sequence VEAIVEFDYQAQH-C, from the N Terminus of the protein sequence according to NP\_114098.1.

Please note the [peptide](#) is available for sale.

### Purification and Storage

Purified from goat serum by ammonium sulphate precipitation followed by antigen affinity chromatography using the immunizing peptide.

Supplied at 0.5 mg/ml in Tris saline, 0.02% sodium azide, pH7.3 with 0.5% bovine serum albumin.

Aliquot and store at -20°C. Minimize freezing and thawing.

### Applications Tested

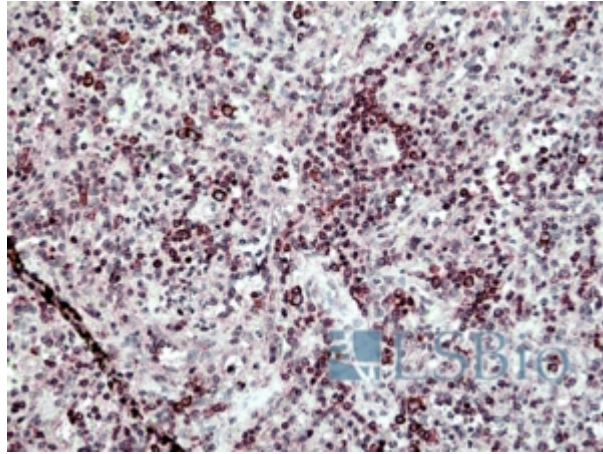
**Peptide ELISA:** antibody detection limit dilution 1:4000.

**IHC:** Paraffin embedded Human Spleen, Tonsil and Placenta. Recommended concentration: 2.5µg/ml.

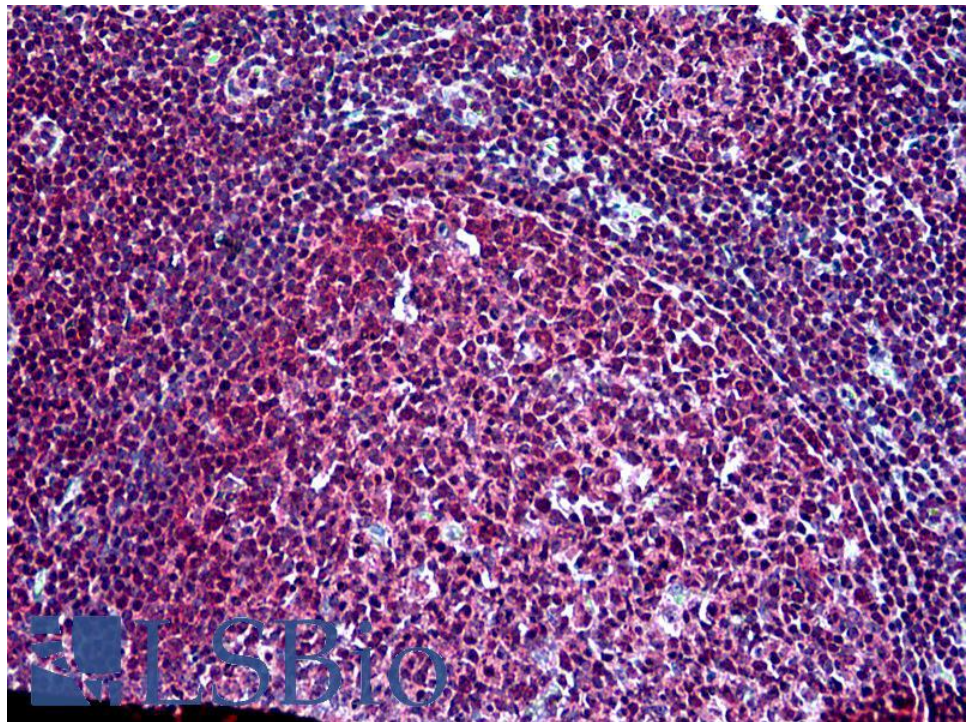
### Species Reactivity

**Tested:** Human

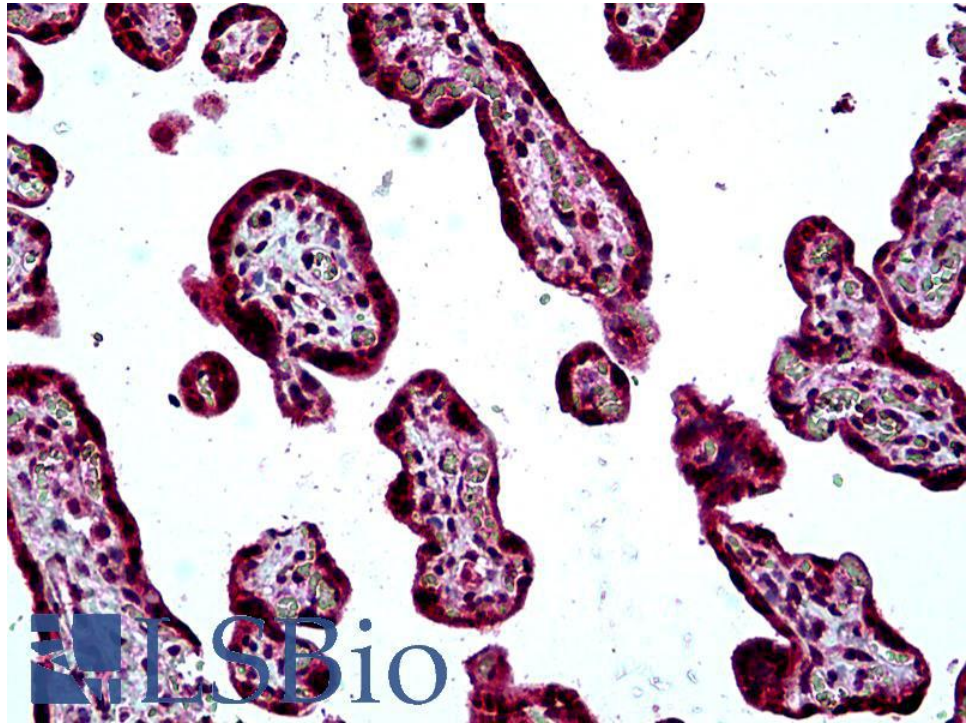
**Expected from sequence similarity:** Human, Mouse, Rat, Dog, Cow



EB05436 (2.5µg/ml) staining of paraffin embedded Human Spleen. Steamed antigen retrieval with citrate buffer pH 6, AP-staining.



EB05436 (2.5µg/ml) staining of paraffin embedded Human Tonsil. Steamed antigen retrieval with citrate buffer pH 6, AP-staining.



EB05436 (2.5µg/ml) staining of paraffin embedded Human Placenta. Steamed antigen retrieval with citrate buffer pH 6, AP-staining.